

CATALOGUE

POSITION INDICATORS

Mechanical and electrical position indicators for spindle extensions

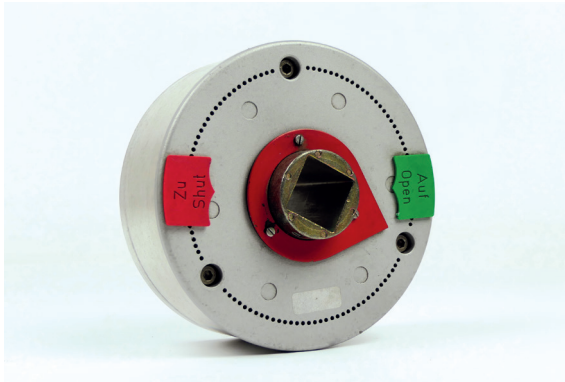


DALMINEX



HISTORY

10



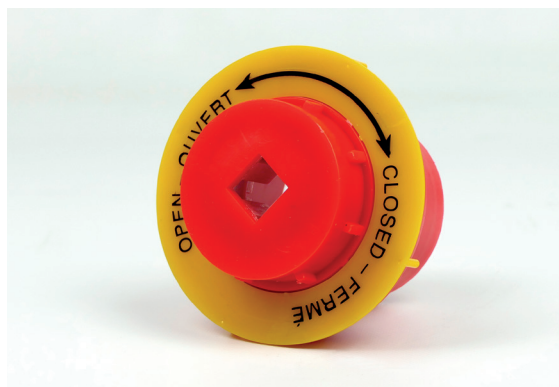
Development of the first mechanical position indicator with an aluminium housing, suitable for butterfly valves.



Mechanical position indicator made of plastic for gate valves.



Plastic direction indicator for DALMINEX spindle extension Tele2000.

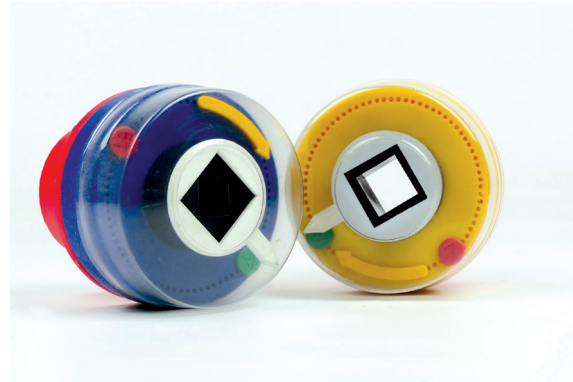


Electrical position indicator with optical technology





1. Electrical position indicator with magnetic switch technology.



2. Position indicator made of plastic.



Position indicator with fibre technology and digital display.



Electrical position indicator with reed contacts for calibration at the place of installation, as well as unique identification via RFID chip.



POSITION FOR



DALMINEX

OPEN

CLOSE



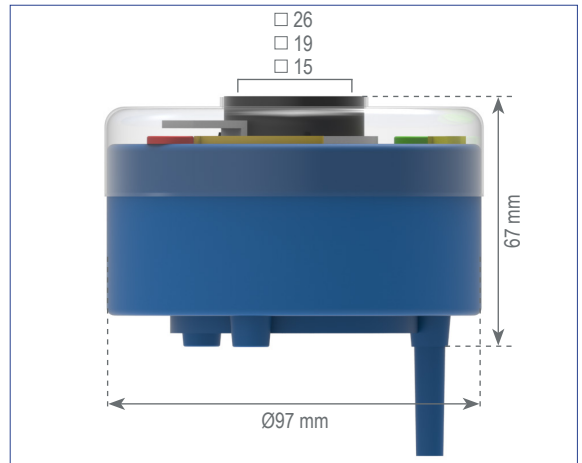
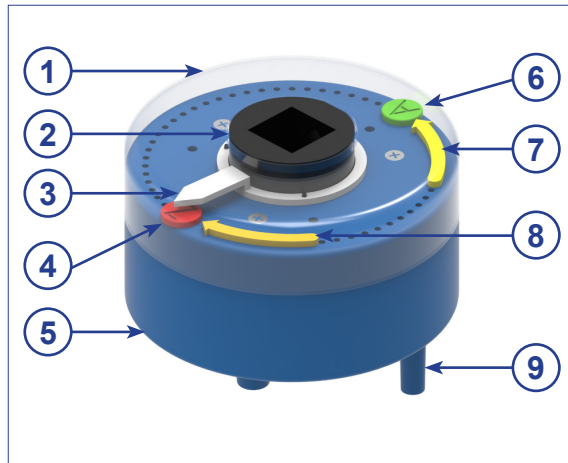
ION INDICATORS R SPINDLE EXTENSIONS

TABLE OF CONTENTS

Mechanical position indicator, plastic	6 - 7
Mechanical position indicator, aluminium	8 - 9
Mechanical position indicator, stainless steel	10 - 11
Electrical position indicator, stainless steel	12 - 13
Electrical data:	
Electrical position indicator, stainless steel	14
Installation example:	
Electrical position indicator, stainless steel	15
Shortest Rigid Sp. Ext. for Position Indicator	16 - 17
DALMINEX installation system	18 - 19
Operating manual:	
Electrical position indicator, stainless steel	20 - 21

POSITION INDICATOR

Mechanical position indicator, plastic



①



Protective cover,
transparent
Material: PE
Replaceable spare part

②



Adapter with Centring-
hole for square
spindle extensions
Material: PE

③



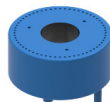
White pointer
Material: PE

④



Red marking pin (C)
Material: PA
Replaceable spare part

⑤



Body, lid with circle of
holes for marking-pins
Material: PE

⑥



Green marking pin (O)
Material: PA
Replaceable spare part

⑦



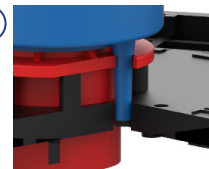
Yellow direction arrow
(anti-clockwise)
Material: PE
Replaceable spare part

⑧



Yellow direction arrow
(clockwise)
Material: PE
Replaceable spare part

⑨



Anchoring-pin for
protective-tube cap or
DALMINEX
supporting-plate
Material: PE



Mechanical position indicator, plastic

max. turns/ stroke	Inner-Square	Spindle extension	Article No.	Weight
81	□ 15 mm	DN40/50	13930	0.2 kg
81	□ 19 mm	DN65-150	13931	0.2 kg
81	□ 26 mm	DN175-300	13932	0.2 kg

DALMINEX installation system

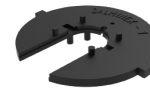
DALMINEX support plate (suitable for position indicators)

Material	Article No.	Weight
Plastic	12601.01	14.0 kg



DALMINEX fixing disc suitable for DALMINEX support plate

Material	Article No.	Weight
Plastic	12602.01	1.16 kg



Surface box acc. to DIN 4056 Type 2

Material	Article No.	Weight
Plastic	4056-2.WK	12.1 kg



alternatively

Surface box acc. to DIN 4056 Type 2 adjustable

Material	Article No.	Weight
Plastic	4056-2.WK-V	12,5 kg



Full function and warranty through professional installation of the DALMINEX installation system.



Replaceable spare parts

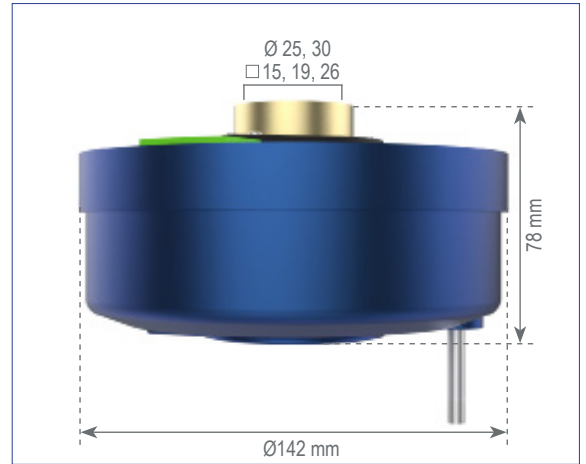
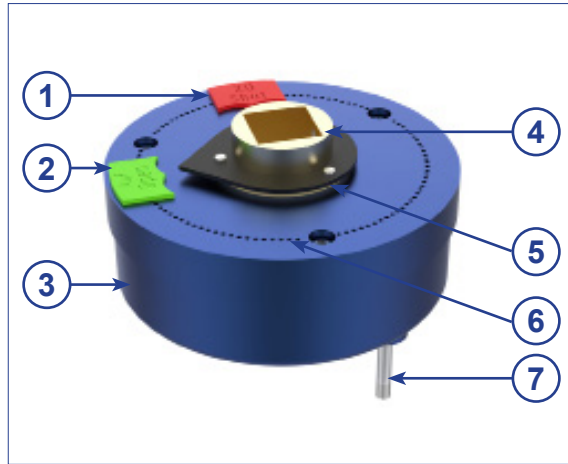
Description	Article No.	Weight
Protective cover	13913.19	0.52 kg
Open/Close marking-pins, green/red	13933.01	0.01 kg
Direction arrow, yellow (anti-clockwise)	13933.02-L	0.01 kg
Direction arrow, yellow (clockwise)	13933.02-R	0.01 kg

Attention! DALMINEX position indicators cannot subsequently be installed on unprepared spindle extensions!

Subject to technical modifications!

POSITION INDICATORS

Mechanical position indicator, aluminium



①



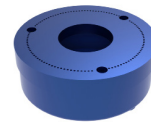
Marking-pin red (close)
Material: PA
Replaceable spare part

②



Marking-pin green (open)
Material: PA
Replaceable spare part

③



Body
(Powder coating)
Material: Cast aluminium

④



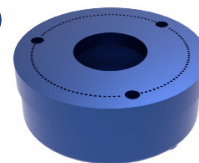
Adapter with Centring-hole for square / keyway spindle extensions
Material: Cast zinc

⑤



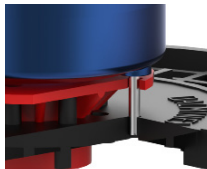
Pointer, black
Material: S235JR epoxy

⑥



Lid with circle of holes for marking-pins
(Powder coating)
Material: Cast aluminium

⑦



Anchoring-pin for protective-tube cap or DALMINEX supporting-plate
Material: 1.4301

scan me!



Mechanical position indicator, aluminium

max. turns/stroke	Round insert diameter		Square insert			Weight
	Ø25 mm	Ø30 mm	□ 15 mm	□ 19 mm	□ 26 mm	
13	13910.25	13910	13910.15	13910.19	13910.26	1.7 kg
47	13909.25	13909	13909.15	13909.19	13909.26	1.7 kg
140	13907.25	13907	13907.15	13907.19	13907.26	1.7 kg
470	13908.25	13908	13908.15	13908.19	13908.26	1.7 kg
1390	13918.25	13918	13918.15	13918.19	13918.26	1.7 kg

DALMINEX installation system

DALMINEX support plate (suitable for position indicators)

Material	Article No.	Weight
Plastic	12601.01	14.0 kg



DALMINEX fixing disc suitable for DALMINEX support plate

Material	Article No.	Weight
Plastic	12602.01	1.16 kg



Surface box acc. to DIN 4056 Type 2

Material	Article No.	Weight
Plastic	4056-2.WK	12.1 kg



alternatively

Surface box acc. to DIN 4056 Type 2 adjustable

Material	Article No.	Weight
Plastic	4056-2.WK-V	12,5 kg



Full function and warranty through professional installation of the DALMINEX installation system.



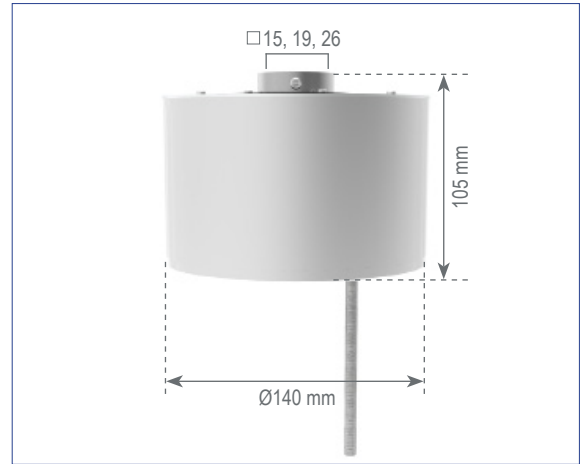
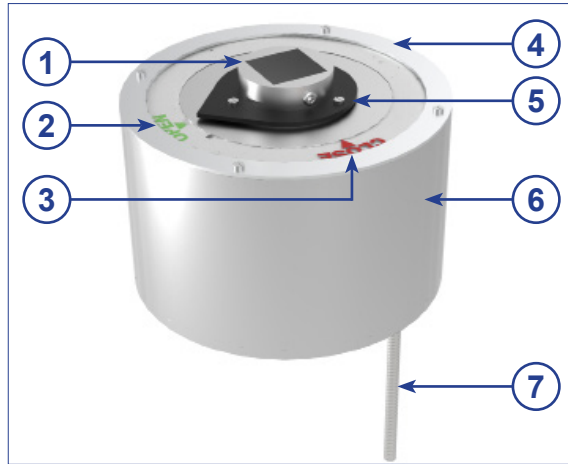
Replaceable spare part

Description	Article No.	Weight
Marking-pin-set, open/shut, green/red	13904	0.01 kg

Attention! DALMINEX position indicators cannot subsequently be installed on unprepared spindle extensions!

Subject to technical modifications!

Mechanical position indicator, stainless steel



①



Adapter with centring-hole
Material: Cast zinc

②



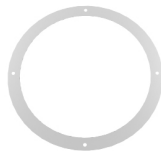
Marking disc (OPEN)
Material: PMMA
Replaceable spare part

③



Marking disc (CLOSE), transparent
Material: PMMA
Replaceable spare part

④



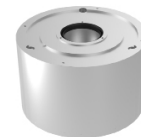
Holding disc
Material: 1.4301
Replaceable spare part

⑤



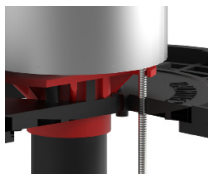
Pointer, black
Material: S235JR epoxy

⑥



Body
Material: 1.4301

⑦



Anchoring-pin for protective-tube cap or DALMINEX supporting-plate
Material: 1.4301

scan me!



Mechanical position indicator, stainless steel

max. turns/stroke	Square insert		Weight
	□ 19 mm	□ 26 mm	
14	13019.14RZW	13026.14RZW	5.0 kg
47	13019.47RZW	13026.47RZW	5.0 kg
140	13019.140RZW	13026.140RZW	5.0 kg
470	13019.470RZW	13026.470RZW	5.0 kg

DALMINEX installation system

DALMINEX support plate (suitable for position indicators)

Material	Article No.	Weight
Plastic	12601.01	14.0 kg



DALMINEX fixing disc suitable for DALMINEX support plate

Material	Article No.	Weight
Plastic	12602.01	1.16 kg



Surface box acc. to DIN 4056 Type 2

Material	Article No.	Weight
Plastic	4056-2.WK	12.1 kg



alternatively

Surface box acc. to DIN 4056 Type 2 adjustable

Material	Article No.	Weight
Plastic	4056-2.WK-V	12,5 kg



Full function and warranty through professional installation of the DALMINEX installation system.



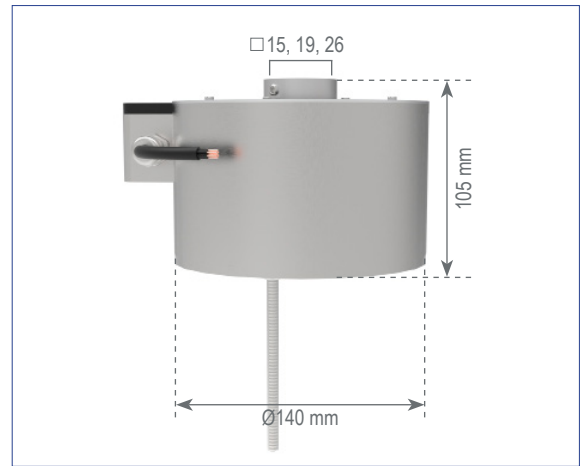
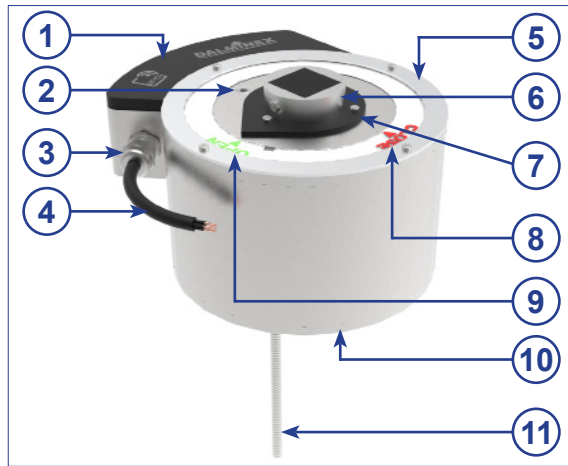
Replaceable spare parts

Description	Article No.	Weight
Marking disc (OPEN)	O-22794	0.004 kg
Marking disc (CLOSE)	C-22794	0.004 kg
Holding disc	22794	0.01 kg

Attention! DALMINEX position indicators cannot subsequently be installed on unprepared spindle extensions!

Subject to technical modifications!

Electrical position indicator, stainless steel



RFID disc
Material: ASA



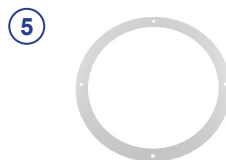
Set screw M8x10 mm
Material: 1.4301



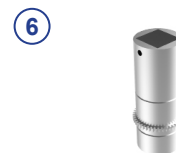
Strain relief
Material: Nickel-plated brass



Control cable
(waterproof)



Holding disc
Material: 1.4301
Replaceable spare part



Adapter with
centring-hole
Material: Cast zinc



Pointer, black
Material: S235JR epoxy



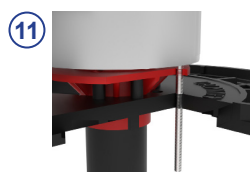
Marking disc
(CLOSE), transparent
Material: PMMA
Replaceable spare part



Marking disc
(OPEN)
Material: PMMA
Replaceable spare part



Body
Material: 1.4301



Anchoring-pin for
protective-tube cap or
DALMINEX supporting-
plate
Material: 1.4301

scan me!



Electrical position indicator, stainless steel

max. turns/stroke	Square insert		Weight
	□ 19 mm	□ 26 mm	
14	13019.14EZW	13026.14EZW	5.9 kg
47	13019.47EZW	13026.47EZW	5.9 kg
140	13019.140EZW	13026.140EZW	5.9 kg
470	13019.470EZW	13026.470EZW	5.9 kg

DALMINEX installation system

DALMINEX support plate (suitable for position indicators)

Material	Article No.	Weight
Plastic	12601.01	14.0 kg



DALMINEX fixing disc suitable for DALMINEX support plate

Material	Article No.	Weight
Plastic	12602.01	1.16 kg



Surface box acc. to DIN 4056 Type 2

Material	Article No.	Weight
Plastic	4056-2.WK	12.1 kg



alternatively

Surface box acc. to DIN 4056 Type 2 adjustable

Material	Article No.	Weight
Plastic	4056-2.WK-V	12,5 kg



Full function and warranty through professional installation of the DALMINEX installation system.



Replaceable spare parts

Description	Article No.	Weight
Marking disc (OPEN)	O-22794	0.004 kg
Marking disc (CLOSE)	C-22794	0.004 kg
Holding disc	22794	0.01 kg

Attention! DALMINEX position indicators cannot subsequently be installed on unprepared spindle extensions!

Subject to technical modifications!



Electrical position indicator, stainless steel

With reed contact switch for line monitoring open and close.

Stainless steel body for installation on a spindle extension buried or in a chamber

- ◆ Capsuled and waterproof in accordance with IP68 DIN 40050
- ◆ Screws and connecting parts are in stainless steel
- ◆ Inner area is grease-proofed
- ◆ Electrical parts are sealed with epoxy resin
- ◆ Maintenance-free
- ◆ Working temperature between -40 bis +105 °C
- ◆ Suitable for use with surface box type DIN 4056 size 2

360° Installation intervals:

- ◆ 0 – 14 turns/stroke
- ◆ 0 – 47 turns/stroke
- ◆ 0 – 140 turns/stroke
- ◆ 0 – 470 turns/stroke

Available for use with following square rod dimensions*:

- ◆ 18x18 mm
- ◆ 25x25 mm

**other options available upon request.*

Available for use with following keyway dimensions:

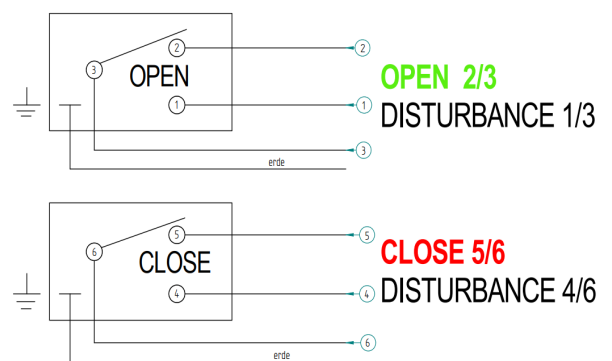
- ◆ Upon request

Electrical data

Magnetic switch, one changeover contact each for opening and closing
 Switch voltage: \exists 1 V bis 20 V
 Switch capacity: 100 VA at a max. 500 mA
 Protection class: min. IP68, DIN 40050

Connection:

Control cable (7x0,5mm²)
 Length 1,5m (other lengths available upon request)



Please take note of the following:

- ◆ The connection and installation of the position indicator must always be carried out by trained personnel.
- ◆ The switch connection cable must hang freely down and shouldn't look up or be bent.
- ◆ The cable-ends have to be water-tight against moisture through cast-resin joints etc.
- ◆ The surface box must be installed such that the water entry can freely flow away.
- ◆ The cable-ends should not lie in water as this would get into the switch housing.
- ◆ The switch should not be used in an aggressive environment as this could affect the seal of the switch housing.
- ◆ The switch housing is protected by up to class IP68.

**In cases where the points above have not been followed, the warranty will be void!
 Warranty claims are only possible with an original DALMINEX Spindle Extension. For safe installation and reliable functionality, we recommend our DALMINEX installation system.**

Installation example





Aut
Open

Shut
NZ

47 U/Hub
www.dalminex.de

Aut
Open

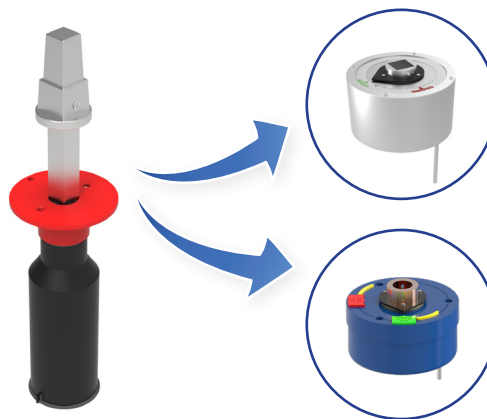
47 U/Hub
www.dalminex.de

Shut
NZ

Shortest Rigid Sp. Ext. for Position Indicator

for position indicator made of aluminium or stainless steel

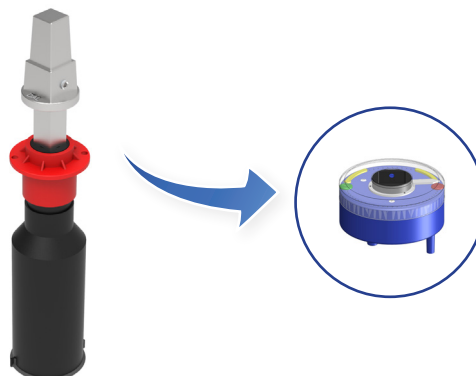
Valve Spindle square	CD Cover depth	Total length (L) Spindle extension	Article No.	Weight
Gate valve DN40/50 SQ14	0,68 m	0,38 m	23601	3,0 kg
Gate valve DN65/80 SQ17	0,72 m	0,38 m	23602	3,1 kg
Gate valve DN100-150 SQ19	0,79 m	0,39 m	23603	3,1 kg
Gate valve DN200 SQ24	0,89 m	0,39 m	23604	3,2 kg
Gate valve DN250/300 SQ27	1,00 m	0,40 m	23605	3,3 kg



*Available upon request with keyway connection and suitable design for butterfly valves.

for position indicator made of plastic

Valve Spindle square	CD Cover depth	Total length (L) Spindle extension	Article No.	Weight
Gate valve DN40/50 SQ14	0,66 m	0,36 m	23606	3,6 kg
Gate valve DN65/80 SQ17	0,70 m	0,36 m	23607	3,7 kg
Gate valve DN100-150 SQ19	0,76 m	0,36 m	23608	3,7 kg
Gate valve DN200 SQ24	0,87 m	0,37 m	23609	3,7 kg
Gate valve DN250/300 SQ27	0,98 m	0,38 m	23610	4,0 kg



*Available upon request with keyway connection and suitable design for butterfly valves.

DALMINEX position indicator cannot be mounted directly onto valves, a DALMINEX Spindle Extension is always required.

Attention! DALMINEX position indicators cannot subsequently be installed on unprepared spindle extensions!

Subject to technical modifications!

The innovative solution for spindle extensions and posit

With the DALMINEX installation system the DALMINEX position indicators as well as spindle extensions, also spindle extensions from other manufacturers, can be fixed easily, either vertically or horizontally. After installing the surface box DIN 4056-2, the top part of the spindle extension as well as the position indicator remain centred and cannot sink down any further.

The DALMINEX installation system consists of the following components:

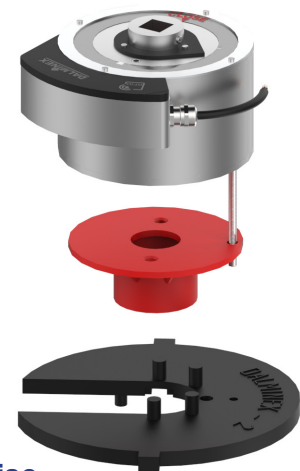
- DALMINEX fixing disc
 - DALMINEX support plate
 - Surface box DIN 4056-2
- or
- Surface box DIN 4052-2 Adjustable



DALMINEX fixing disc, can be used on both sides



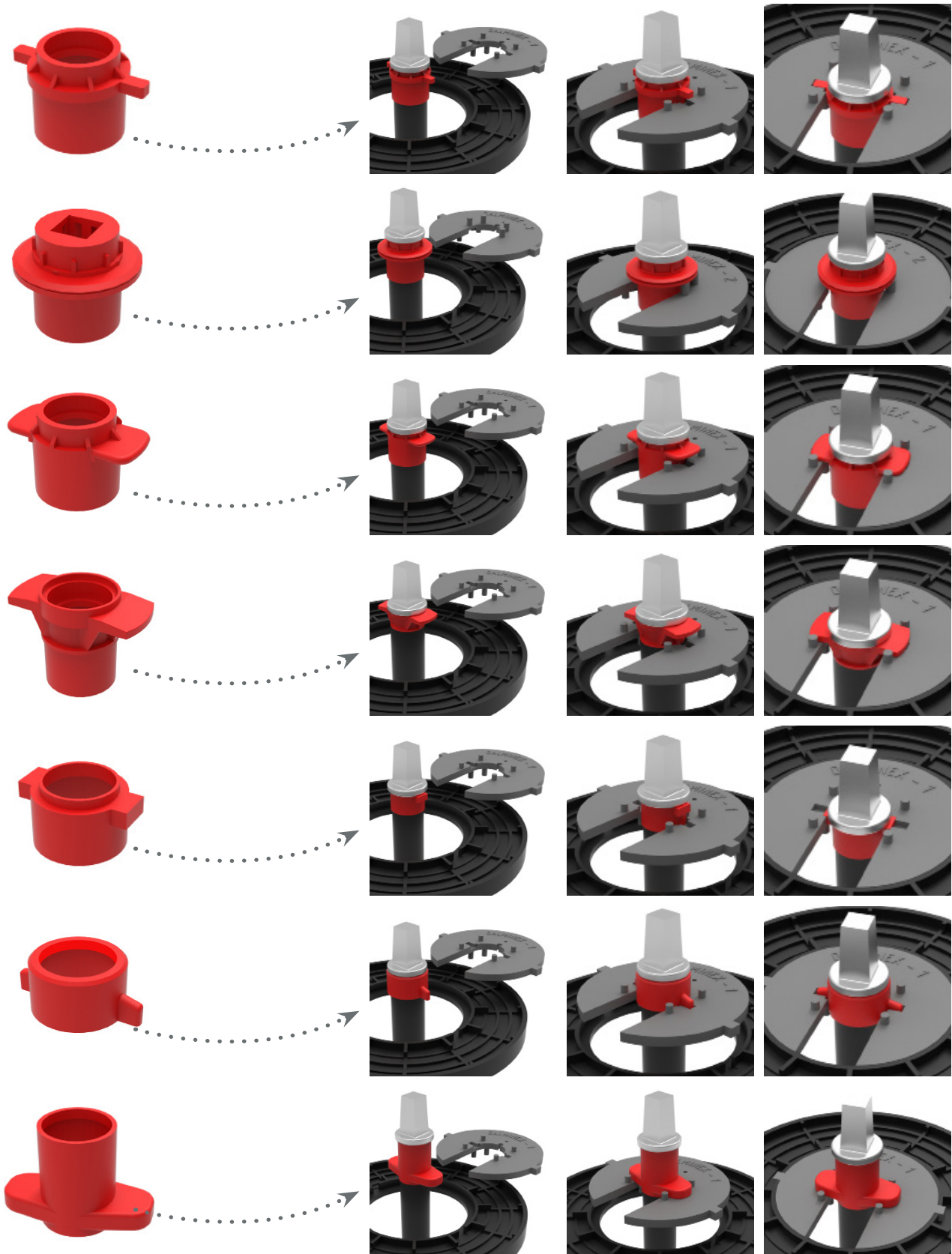
DALMINEX support plate suitable for DALMINEX fixing disc and surface box acc. to DIN 4056 Type 2 or Type 2 Adjustable



scan me!

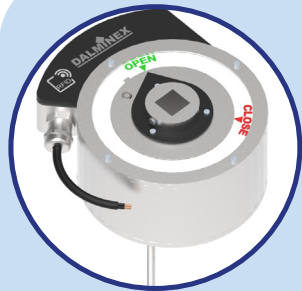


ion indicators in pipeline construction



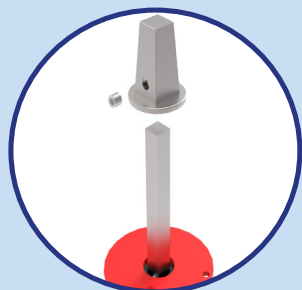
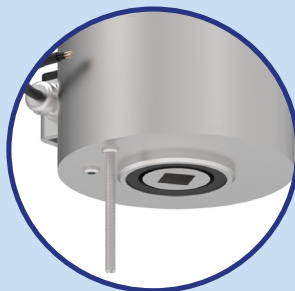
Subject to technical modifications!

Electric position indicator, stainless Steel



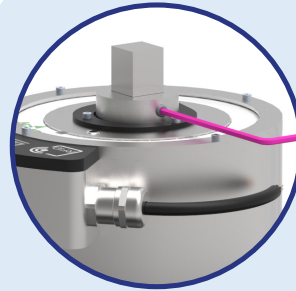
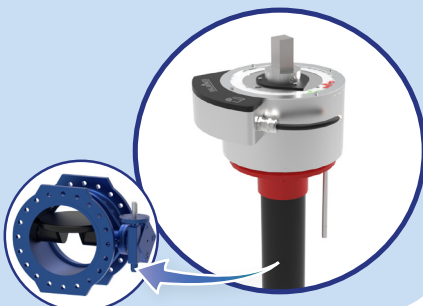
Delivery Condition:
Pointer set to Open.

Screw in the
anchoring-pin.



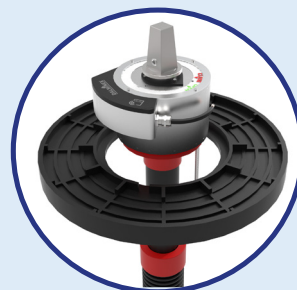
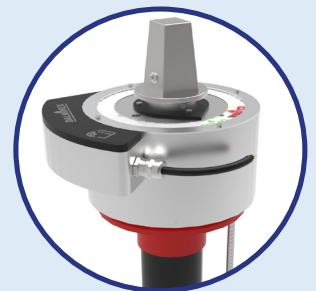
Remove the square cap
from the extension.

Put the position
indicator
on the opened
valve, fix the an-
choring-pin on the



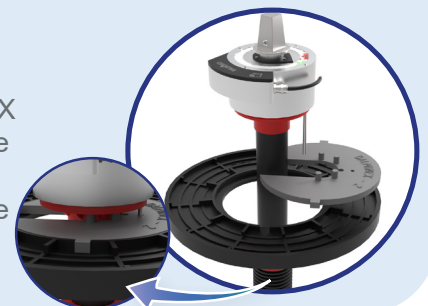
Tighten the set screw.
(Allen key M3 (pink))

Put the square cap back
on and tighten the set
screw.

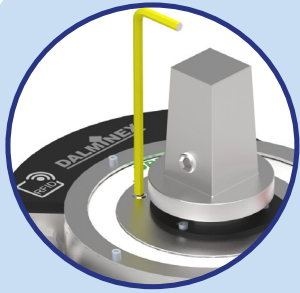


Put on the
DALMINEX Support
Plate.

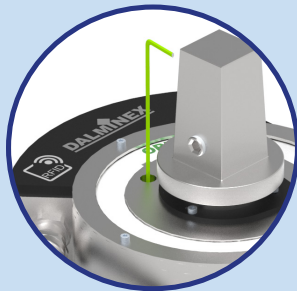
Extend the spindle
extension,
insert the DALMINEX
fixing disc and make
sure that the
centring cap and the
position.



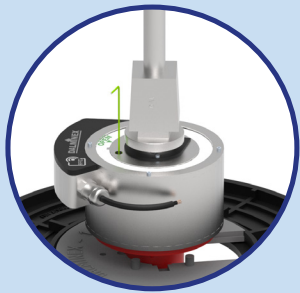
Electric position indicator, stainless Steel



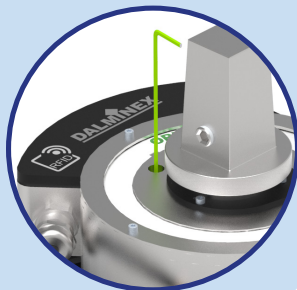
Loosen and remove the marked set screw.
(Allen key M4 (yellow))



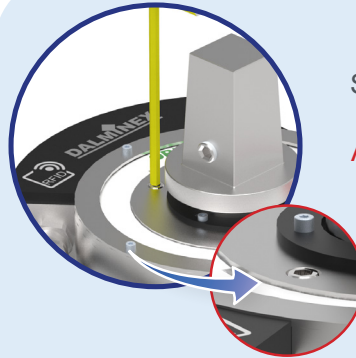
Loosen the internal set screw inside the housing with an Allen key. **Do not remove the key!**
(Allen key M2.5 (green))



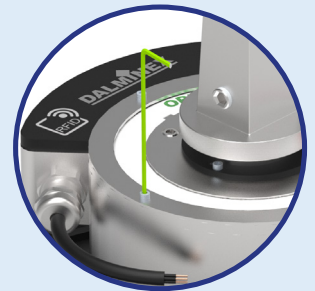
Keep the key in place and close the valve.
(Allen key M2.5 (green))



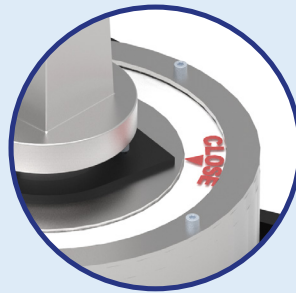
Tighten the internal set screw inside the housing with the Allen key. **Remove the key.**
(Allen key M2.5 (green))



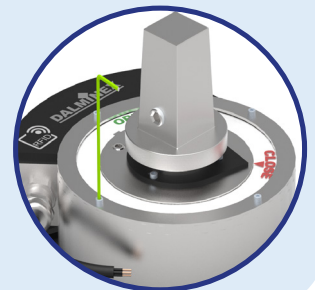
Screw in and tighten the removed set screw.
ATTENTION: Flush with the housing!
(Allen key M4 (yellow))



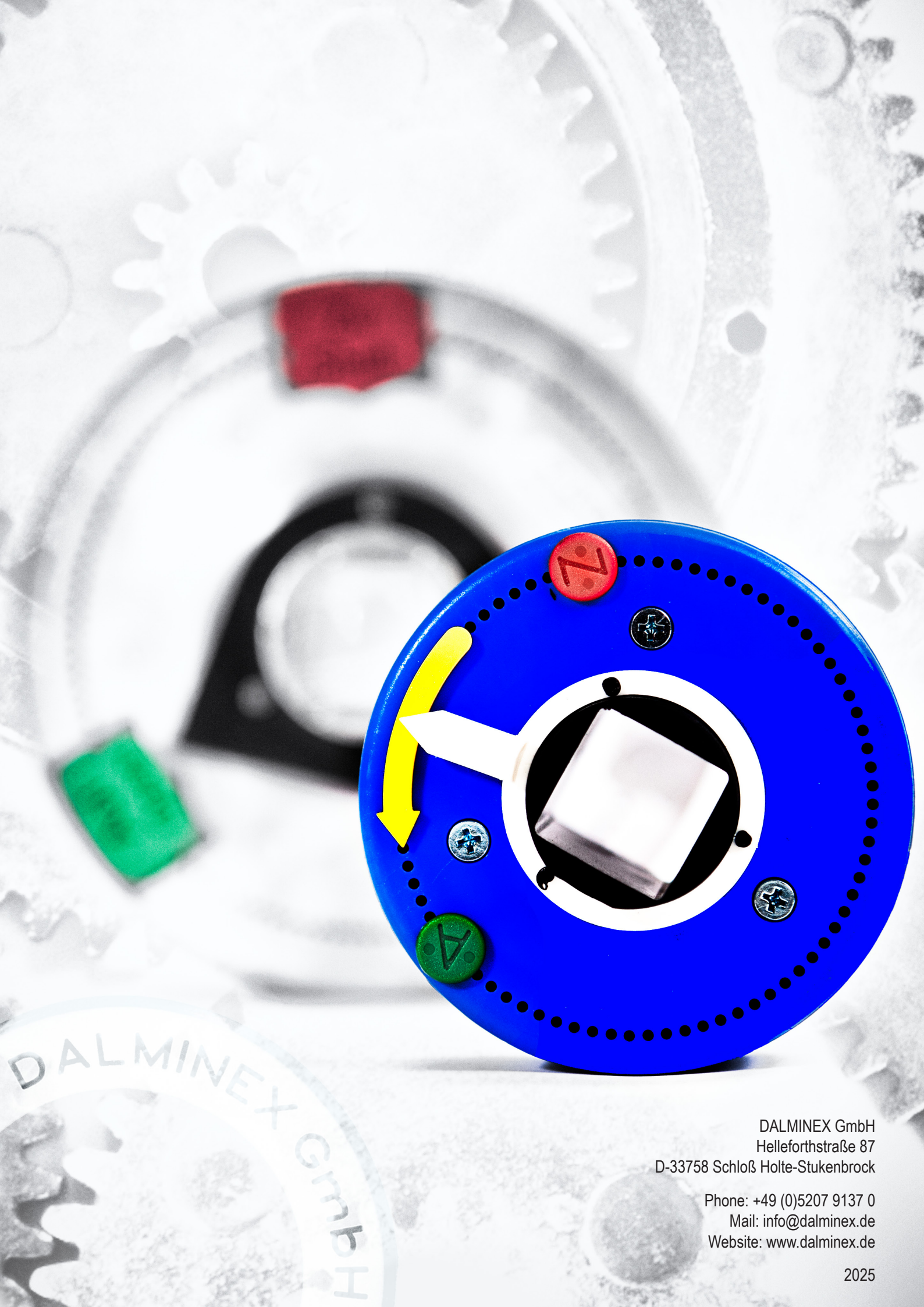
Loosen the hex socket screws.
(Allen key M2.5 (green))



Align the CLOSE marking disc according to the arrow.



Tighten the hex socket screws.
(Allen key M2.5 (green))



DALMINEX GmbH

DALMINEX GmbH
Helleforthstraße 87
D-33758 Schloß Holte-Stukenbrock

Phone: +49 (0)5207 9137 0
Mail: info@dalminex.de
Website: www.dalminex.de