

# CATALOGUE

## TELESCOPIC SPINDLE EXTENSIONS

T2, T3, T4



# DALMINEX



# CERTIFICATES

## DVGW-GW336 Type examination certificate

**DVGW type examination certificate**  
**DVGW-Baumusterprüfzertifikat**

**DV-4595CM0081**  
Registration Number  
Registernummer

<b>Field of Application</b> Anwendungsbereich	products of gas and water supply Produkte der Gas- und Wasserversorgung
<b>Owner of Certificate</b> Zertifikatinhaber	Dalminex GmbH Helleforthstr. 87, D-33758 Schloß Holte-Stukenbrock
<b>Distributor</b> Vertreiber	Dalminex GmbH Helleforthstr. 87, D-33758 Schloß Holte-Stukenbrock
<b>Product Category</b> Produktart	Pipe equipment and fittings: Extension spindle (4595)
<b>Product description</b> Produktbezeichnung	height adjustable extension spindle for valves in the gas and drinking water supply
<b>Model</b> Modell	Teleskop-T3-GW336...
<b>Test reports</b> Prüfberichte	Laboratory control test: 153 939 K2025 from 27.01.2025 (GW) Type testing: 16624 from 31.01.2011 (GW)
<b>Test basis</b> Prüfgrundlagen	DVGW GW 336-2 (01.09.2010)

**Date of Expiry / File No.** 31.01.2027 / 26-0106-WNV  
**Ablaufdatum / Aktenzeichen**

30.01.2026 LE A-1/2  
Data, issued by, sheet, Head of Certification Body  
Datum, Bearbeiter, Blatt, Leiter der Zertifizierungsstelle

**Dakks**  
Deutscher  
Akkreditierungsstelle  
D-22 16029-01-03

**DVGW CERT GmbH**  
Josef-Werner-Str. 1-3  
53123 Bonn  
Tel. +49 228 91 89-0  
info@dvgw-cert.de  
www.dvgw-cert.de

**DVGW-Baumusterprüfzertifikat**  
**DVGW type examination certificate**

**DV-4595CT0447**  
Registernummer  
registration number

<b>Anwendungsbereich</b> field of application	Produkte der Gas- und Wasserversorgung products of gas and water supply
<b>Zertifikatinhaber</b> owner of certificate	Dalminex GmbH Helleforthstr. 87, D-33758 Schloß Holte-Stukenbrock
<b>Vertreiber</b> distributor	Dalminex GmbH Helleforthstr. 87, D-33758 Schloß Holte-Stukenbrock
<b>Produktart</b> product category	Rohrleitungsteile und Zubehör: Erdeinbaugarnitur (4595)
<b>Produktbezeichnung</b> product description	Teleskop-Erdeinbaugarnitur
<b>Modell</b> model	Teleskop-EBG T4
<b>Prüfberichte</b> test reports	Kontrollprüfung Labor: 161929 K2022 vom 16.01.2023 (GW) Ergänzungsprüfung: 161929E/1/18096 vom 28.04.2021 (GW) Baumusterprüfung: 161929 T0 vom 15.05.2018 (GW)
<b>Prüfgrundlagen</b> test basis	DVGW GW 336-2 (01.09.2010)

**Ablaufdatum / AZ** 15.05.2026 / 23-0602-WNV  
**date of expiry / file no.**

15.08.2023 LE A-1/2  
Data, issued by, sheet, Head of Certification Body  
Datum, Bearbeiter, Blatt, Leiter der Zertifizierungsstelle

**Dakks**  
Deutscher  
Akkreditierungsstelle  
D-22 16029-01-03

**DVGW CERT GmbH**  
Zertifizierungsstelle  
Josef-Werner-Str. 1-3  
53123 Bonn  
Tel. +49 228 91 89-0  
Fax +49 228 91 89-1  
www.dvgw-cert.de  
info@dvgw-cert.de

## Quality management

**CERTIFICATE**

Certificate Registration No.: 12 100 37944 TMS / Order No.: 70759102

The Certification Body  
of TÜV SÜD Management Service GmbH  
certifies that the organization

**DALMINEX**  
**Dalminex GmbH**  
Helleforthstraße 87  
33758 Schloß Holte-Stukenbrock  
Germany

for the scope

Development, production and distribution of  
spindle extensions, operating tools for  
valves and components for  
pipelines and plant construction

has established and applies a Quality Management System.  
An audit was performed and has furnished proof  
that the requirements according to

**DIN EN ISO 9001:2015**  
are fulfilled.

The certificate is valid from 2025-03-16 until 2028-03-15.

**Fred Wenke**  
Head of Certification Body  
Munich, 2025-02-25

**TÜV SÜD**  
Management Service

**IAF** **Dakks**

**TÜV SÜD**  
ISO 9001  
ISO 9001

TÜV SÜD Management Service GmbH • Zertifizierungsstelle • Riederstrasse 57 • 80339 München • Germany  
www.tuv-sud.com/de/certificate-verify-check

Subject to modifications

# TABLE OF CONTENTS



## General information

Technical details	4
Protection tube functionality	5
Quality certificate spindle extensions	6
Definition Cover depth (CD)	7

## Telescopic Spindle Extensions T2

Telescopic spindle extension T2 for Service valves	8 - 9
Telescopic spindle extension T2 GREEN for Service valves	10 - 11
Telescopic spindle extension T2 for Gate valves	12 - 13
Telescopic spindle extension T2 GREEN for Gate valves	14 - 15

## Telescopic Spindle Extensions T3

Telescopic spindle extension T3 for Service valves	16 - 17
Telescopic spindle extension T3 for Gate valves	18 - 19
Telescopic spindle extension T3 for Service valves with screw bell	20 - 21
Telescopic spindle extension T3 for Gate valves with screw bell	20 - 21
Alternative solutions for Telescopic spindle extensions T3	22 - 23

## Telescopic Spindle Extensions T4

Telescopic spindle extension T4 for Service valves	24 - 25
Telescopic spindle extension T4 for Gate valves	26 - 27
Telescopic spindle extension T4X for Gate valves	28 - 29

## Telescopic Spindle Extensions as per DVGW GW336

Telescopic spindle extension T3 acc. to DVGW GW336 for Service valves	30 - 31
Telescopic spindle extension T3 as per DVGW GW336 for Gate valves	32 - 33
Telescopic spindle extension T4 as per DVGW GW336 for Gate valves	34 - 35

## Accessories

DALMINEX installation system	36 - 37
Locking device for service valves	38
Locking device for gate valves	38
Marking discs	39
Cover caps for Spindle Extensions	39

## Telescopic Spindle Extensions in comparison

Telescopic spindle extension T4 as per DVGW GW336 compared to Telescopic spindle extension T2	40 - 41
Telescopic spindle extension T4X compared to Telescopic spindle extension T2	42 - 43

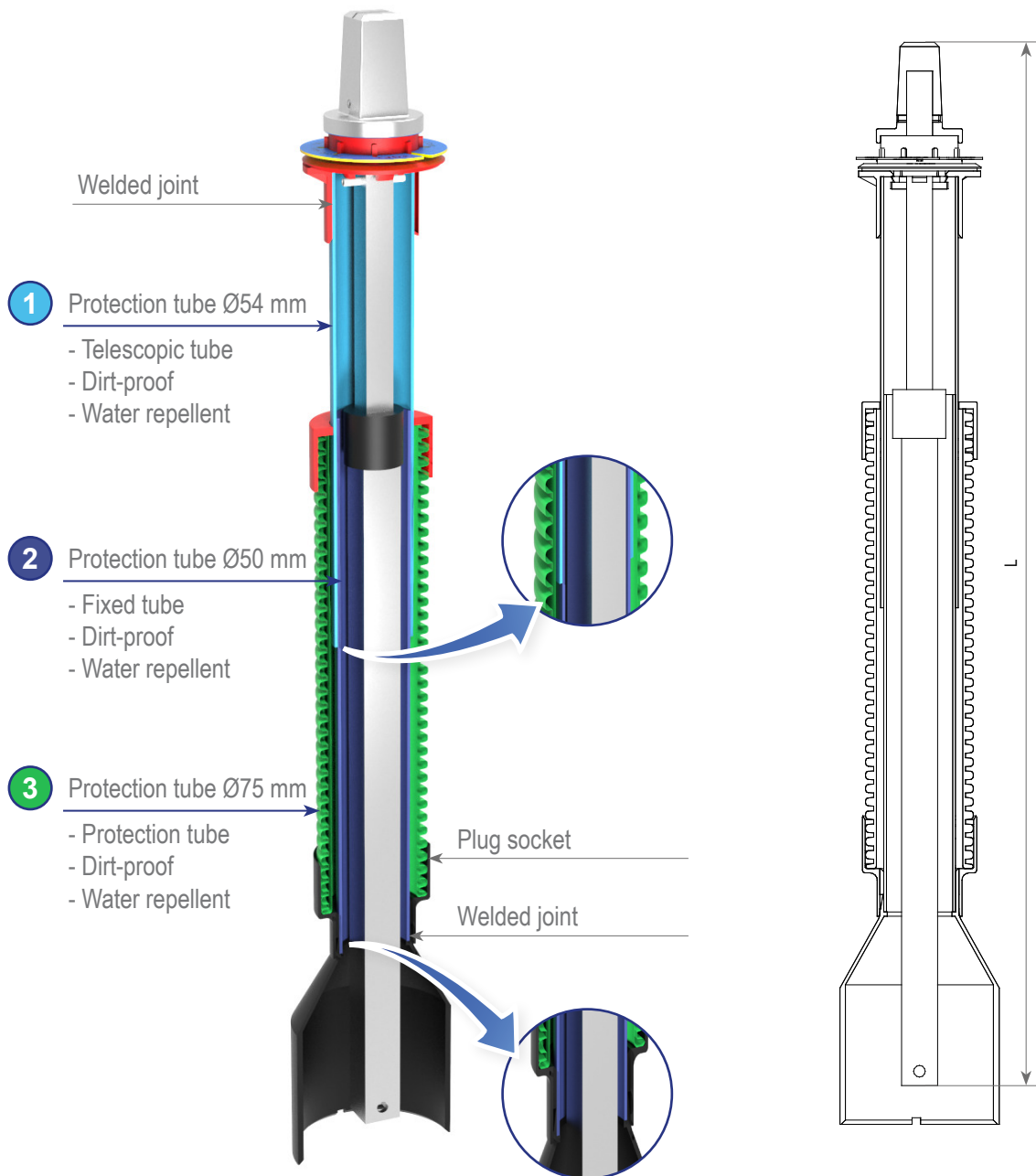
## Technical charecteristics: Spindle extensions



## Telescopic spindle extension type T3 (3 Protection tubes)

The function of this cable protection tube as a component of our installation set is to protect the internal telescopic tubes from the external pressure caused by backfilling the pipe trench with earth and gravel.

The cable protection tube is not an explicit water and dirt protection for the bar. In our product, this function is performed by the telescopic protective tube inside the corrugated tube. The combination of all three protection tubes (T3 system, see drawing in the Appendix) enables trouble-free turning and operation of the internal key bar after installation and backfilling.





## Warranty declaration

Our spindle extensions are manufactured according to the requirements of the DVGW worksheet GW336. Showing that the primary material is selected and checked accordingly.

### Metallic material:

- ◆ Steel according to DIN EN 10025
- ◆ Stainless steel with a minimum of 13% chrome:
  - Standard: V2A: 1.4301 (X5CrNi18-10)
  - Upon request: V4A: 1.4571 (X6CrNiMoTi17-12-2)
- ◆ Square caps and coupling adapters are made of ductile cast iron according to DIN 3230-5. material class: WG 2 (GGG40/EN GJS400-15)
- ◆ Square caps and coupling adapters are made of ductile cast iron with a minimum of 13% chrome (AISI304)

### Protection tubes:

- ◆ Polyethylen (PE-HD)
- ◆ Polypropylen (PP)
- ◆ Polyoxymethylen (POM)

### Corrosion protection for corrosion-susceptible metallic material:

- ◆ Hot-dipped galvanisation of bars according to DIN EN 10240
- ◆ Galvanisation of cast iron parts according DIN EN 12329 und DIN 50961

The material thickness of the bars comply with the according minimum requirements of the worksheet DVGW GW336 and its normative references in force.

All spindle extensions are produced on our premises in Schloss Holte-Stukenbrock.

Upon professional installation we grant a warranty of 5 years.

A certification according to German Institute for Standardisation EN ISO 9001:2015 has been received.

**Schloß Holte-Stukenbrock, January 2026**

Markus Kerstingjöhanner,  
General Manager

### DALMINEX GmbH

Helleforthstraße 87  
D-33758 Schloß Holte-Stukenbrock

Phone: +49 5207 9137-0

info@dalminex.de  
www.dalminex.de

## Definition of Cover Depth (CD)

Cover Depth (CD) is described as the length between the top of the mains pipe to the surface box lid.

The DALMINEX definition of cover depth is based on the values given in the table below. Minor deviations can occur for some valves e.g. a shorter minimum cover depth for a shorter valve and a longer maximum cover depth for a taller valve.

Valves higher or lower than the average value can possibly result in limitation of the minimum or maximum cover depth. Please indicate valve type and manufacture when ordering.

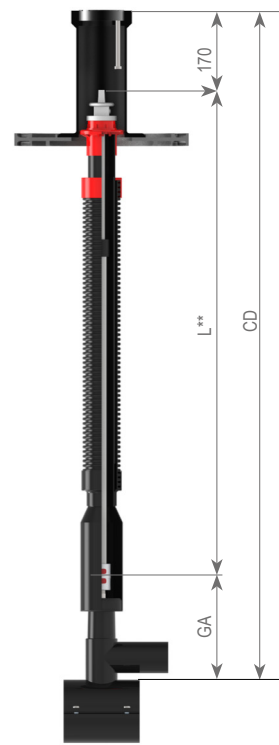
The manufacturing process may cause a tolerance of +/- 3 cm with respect to total length.

Valves	H*
Service Valve	160 mm
Gate Valve DN25	160 mm
Gate Valve DN32	160 mm
Gate Valve DN40	200 mm
Gate Valve DN50	200 mm
Gate Valve DN65	240 mm
Gate Valve DN80	240 mm
Gate Valve DN100	310 mm
Gate Valve DN125	310 mm
Gate Valve DN150	310 mm
Gate Valve DN175	410 mm
Gate Valve DN200	410 mm
Gate Valve DN250	520 mm
Gate Valve DN300	520 mm
Gate Valve DN350	520 mm
Gate Valve DN400	700 mm
Gate Valve DN450	700 mm
Gate Valve DN500	800 mm
Gate Valve DN600	800 mm

**Dalminex Standard**



**Definition of cover depth according to DVGW GW336**



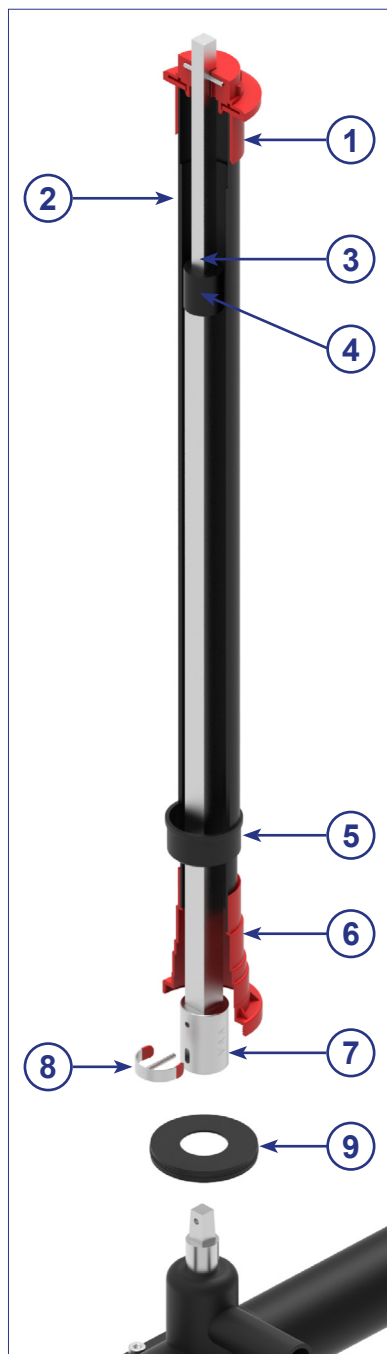
\* H is the average height of most valves commercially available

\*\* L is the length of the spindle extension

The material thickness complies with all applicable torque requirements of German Standard DVGW regulations worksheet GW336.



## Telescopic spindle extension T2 for service valves



Centring cap



Tubes



Transport lock



PE-brake



Sealing cap



Combi bell



Coupling

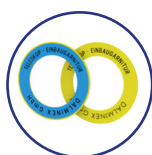


Clip-pin



Bell adapter

### Optional:



Marking discs



Square cap

scan me!



## Telescopic spindle extension T2 for service valves



Valve Spindle square	CD* Cover depth	Total length (L)** Spindle extension	Article No.	Weight	PU
Service valve SQ12	0.55 - 0.70 m	0.28 - 0.41 m	14095.01	1.1 kg	100
	0.70 - 1.00 m	0.43 - 0.69 m	10088.01	1.5 kg	100
	0.85 - 1.30 m	0.58 - 0.98 m	14004.01	2.0 kg	100
	1.00 - 1.50 m	0.78 - 1.31 m	14005.01	2.4 kg	100
	1.25 - 1.80 m	0.89 - 1.59 m	14006.01	2.4 kg	100
	1.50 - 2.00 m	0.99 - 1.76 m	14007.01	3.1 kg	50
	1.70 - 2.70 m	1.38 - 2.34 m	14094.01	4.3 kg	50

**PU = Deliveries only possible in pack units!**

\*Cover depth measurements depend on the height of the valve used, see p. 7

\*\*Other lengths available upon request.

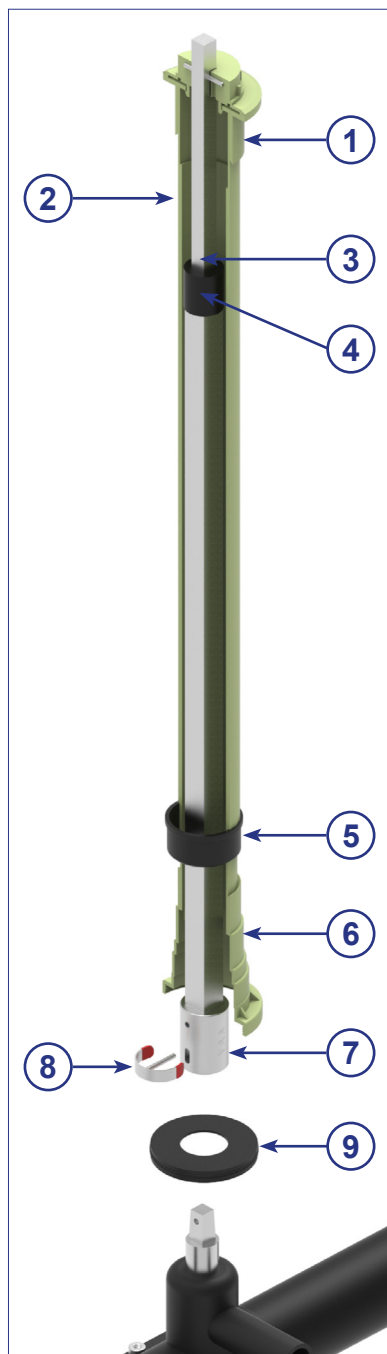
## Tender text:

**Telescopic Spindle Extension T2 for service valves**

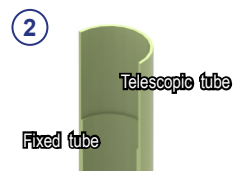
A two-piece hot-dip galvanised steel rod DIN EN 10240 with a forged square accord. to DIN 3223 E, coupling (bottom adapter) made of GJS400-15, galvanised accord. to DIN EN 12329 und DIN 50961 (alternatively made of stainless steel AISI 304). Toolless assembly of the spindle extension with a stainless steel clip-pin. Connection pins made of stainless steel 1.4301. Transport security of the rod minimum of 140N. Self-locking in every adjustable position through a PE sealing collar on the steel tube. Torques up to 140Nm. Two-piece PE protection tube system with a bonded centring cap, universal combi bell and sealing. Completely dirt-proof and water-repellent. Optional: Marking disc (double sided gas and water) as well as bell adapters/sealing inserts.



## Telescopic spindle extension T2-GREEN for service valves



Centring cap



Tubes



Transport lock



PE-brake



Sealing cap



Combi bell



Coupling

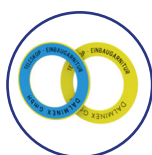


Clip-pin

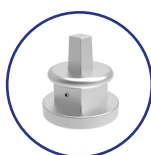


Bell adapter

### Optional:



Marking discs



Square cap

scan me!



## Telescopic spindle extension T2-GREEN for service valves



Valve Spindle square	CD* Cover depth	Total length (L)** Spindle extension	Article No.	Weight
Service valve SQ12	0.55 - 0.70 m	0.28 - 0.41 m	14095.01.BIO	1.1 kg
	0.70 - 1.00 m	0.43 - 0.69 m	10088.01.BIO	1.5 kg
	0.85 - 1.30 m	0.58 - 0.98 m	14004.01.BIO	2.0 kg
	1.00 - 1.50 m	0.78 - 1.31 m	14005.01.BIO	2.4 kg
	1.25 - 1.80 m	0.89 - 1.59 m	14006.01.BIO	2.9 kg
	1.50 - 2.00 m	0.99 - 1.76 m	14007.01.BIO	3.1 kg
	1.70 - 2.70 m	1.38 - 2.34 m	14094.01.BIO	4.3 kg

\*Cover depth measurements depend on the height of the valve used, see p. 7

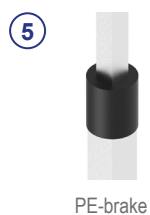
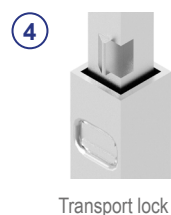
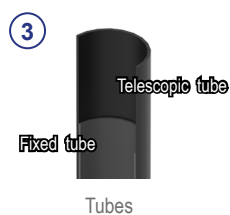
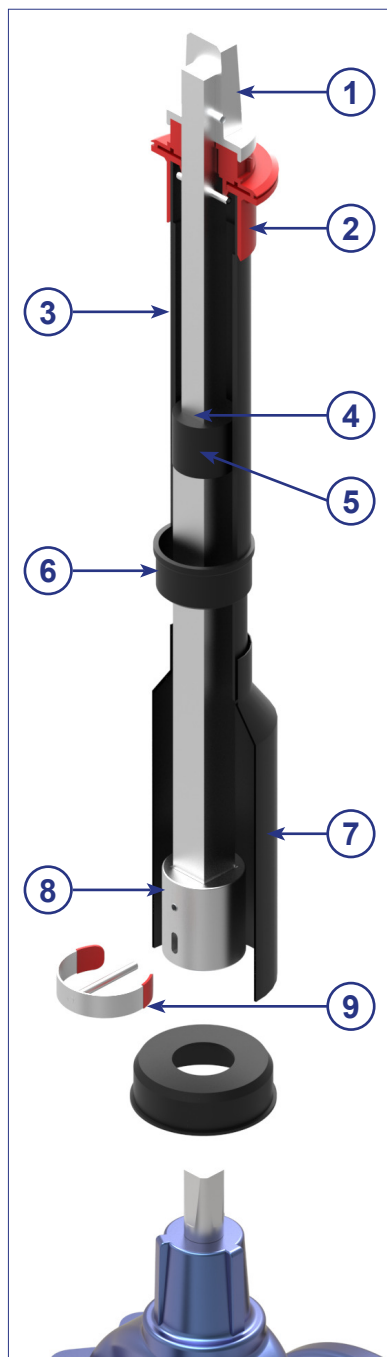
\*\*Other lengths available upon request.

### Tender text:

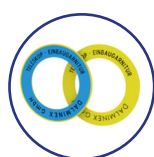
#### Telescopic Spindle Extension T2-GREEN for service valves

A two-piece hot-dip galvanised steel rod DIN EN 10240 with a forged square accord. to DIN 3223 E, coupling (bottom adapter) made of GJS400-15, galvanised accord. to DIN EN 12329 und DIN 50961 (alternatively made of stainless steel AISI 304). Toolless assembly of the spindle extension with a stainless steel clip-pin. Connection pins made of stainless steel 1.4301. Transport security of the rod minimum of 140N. Self-locking in every adjustable position through a PE sealing collar on the steel tube. Torques up to 140Nm. Two-piece Bio-PE protection tube system with a bonded centring cap, universal combi bell and sealing. Completely dirt-proof and water-repellent. Optional: Marking disc (double sided gas and water) as well as bell adapters/sealing inserts.

## Telescopic spindle extension T2 for gate valves



### Optional:



## Telescopic spindle extension T2 for gate valves



Valve Spindle square	CD* Cover depth	Total length (L)** Spindle extension	Article No.	Weight	PU
Gate valve DN40/50 SQ14	0.75 - 1.00 m	0.47 - 0.70 m	13997.01	2.9 kg	50
	1.00 - 1.50 m	0.70 - 1.20 m	14008.01	4.0 kg	50
	1.25 - 1.80 m	0.93 - 1.61 m	14009.01	4.7 kg	50
	1.50 - 2.00 m	1.03 - 1.82 m	14010.01	5.2 kg	50
	1.70 - 2.70 m	1.40 - 2.56 m	14089.01	6.9 kg	50
Gate valve DN65/80 SQ17	0.85 - 1.00 m	0.45 - 0.67 m	13998.01	3.0 kg	60
	1.00 - 1.50 m	0.69 - 1.14 m	14011.01	4.0 kg	60
	1.25 - 1.80 m	0.85 - 1.45 m	14012.01	4.7 kg	60
	1.50 - 2.00 m	0.95 - 1.65 m	14013.01	5.2 kg	60
	1.70 - 2.70 m	1.32 - 2.41 m	14090.01	6.9 kg	60
Gate valve DN100-150 SQ19	0.80 - 0.95 m	0.40 - 0.58 m	13999.01	2.6 kg	60
	1.00 - 1.20 m	0.54 - 0.84 m	14099.01	3.2 kg	60
	1.20 - 1.50 m	0.64 - 1.05 m	14014.01	3.8 kg	60
	1.25 - 1.80 m	0.80 - 1.40 m	14015.01	4.5 kg	60
	1.50 - 2.00 m	0.95 - 1.64 m	14016.01	5.0 kg	60
Gate valve DN175/200 SQ24	0.90 - 1.00 m	0.36 - 0.44 m	13565.01	3.4 kg	10
	1.10 - 1.30 m	0.52 - 0.79 m	14017.01	4.3 kg	10
	1.25 - 1.80 m	0.77 - 1.25 m	14018.01	5.8 kg	10
	1.50 - 2.00 m	0.86 - 1.46 m	14019.01	6.5 kg	10
	1.70 - 2.70 m	1.21 - 2.19 m	14092.01	9.1 kg	10
Gate valve DN250-350 SQ27	1.00 - 1.10 m	0.37 - 0.49 m	14101.01	3.4 kg	10
	1.10 - 1.30 m	0.50 - 0.80 m	14020.01	4.4 kg	10
	1.30 - 1.80 m	0.71 - 1.15 m	14021.01	5.5 kg	10
	1.50 - 2.00 m	0.86 - 1.45 m	14023.01	6.5 kg	10
	1.80 - 2.70 m	1.16 - 2.05 m	14093.01	8.6 kg	10

**PU = Deliveries only possible in pack units!**

\*Cover depth measurements depend on the height of the valve used, see p. 7

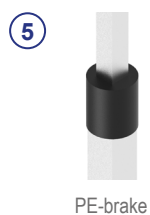
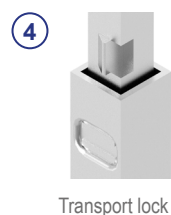
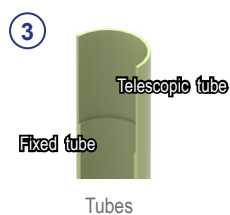
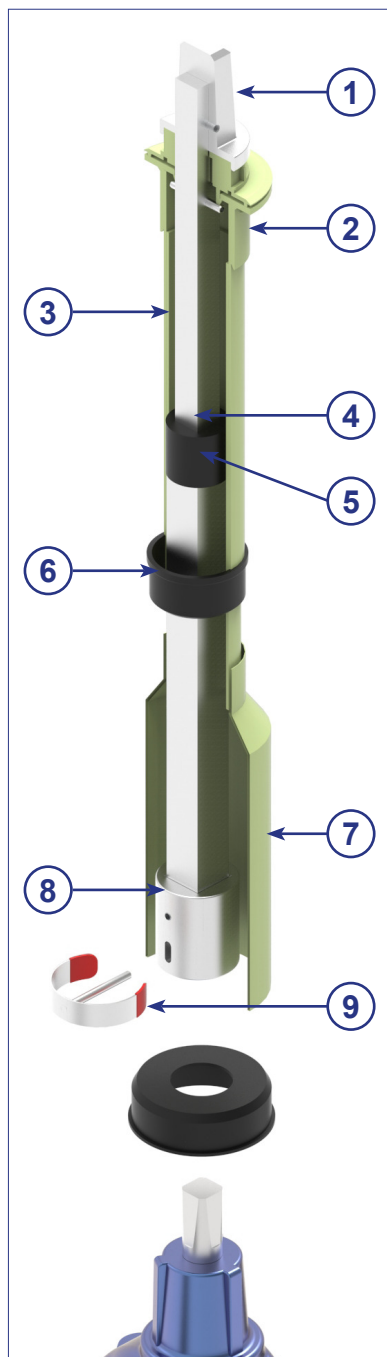
\*\*Other lengths available upon request.

#### Tender text:

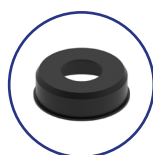
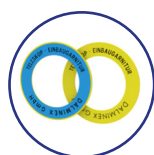
##### Telescopic Spindle Extension T2 for gate valves

A two-piece hot-dip galvanised steel rod accord. to DIN EN 10240 (alternatively in stainless steel), coupling (bottom adapter) made of GJS400-15, galvanised accord. to DIN EN 12329 und DIN 50961 (alternatively made of stainless steel AISI 304). Square cap (top adapter) made of GJS400-15, galvanised accord. to DIN EN 12329 and DIN 50961 (alternatively in stainless steel AISI 304). Toolless assembly of the spindle extension with a stainless steel clip-pin. Connection pins made of stainless steel 1.4301. Transport security of the rod minimum of 150N. Self-locking in every adjustable position through a PE sealing collar on the steel tube. Torques according to GW336. Two-piece PE protection tube system with a bonded centring cap, universal bell and sealing. Completely dirt-proof and water-repellent. Optional: Marking disc (double sided gas and water) as well as bell adapters/sealing inserts.

## Telescopic spindle extension T2-GREEN for gate valves



### Optional:



## Telescopic spindle extension T2-GREEN for gate valves



Valve Spindle square	CD* Cover depth	Total length (L)** Spindle extension	Article No.	Weight
Gate valve DN40/50 SQ14	0.75 - 1.00 m	0.47 - 0.70 m	13997.01.BIO	2.9 kg
	1.00 - 1.50 m	0.70 - 1.20 m	14008.01.BIO	4.0 kg
	1.25 - 1.80 m	0.93 - 1.61 m	14009.01.BIO	4.7 kg
	1.50 - 2.00 m	1.03 - 1.82 m	14010.01.BIO	5.2 kg
	1.70 - 2.70 m	1.40 - 2.56 m	14089.01.BIO	6.9 kg
Gate valve DN65/80 SQ17	0.85 - 1.00 m	0.45 - 0.67 m	13998.01.BIO	3.0 kg
	1.00 - 1.50 m	0.69 - 1.14 m	14011.01.BIO	4.0 kg
	1.25 - 1.80 m	0.85 - 1.45 m	14012.01.BIO	4.7 kg
	1.50 - 2.00 m	0.95 - 1.65 m	14013.01.BIO	5.2 kg
	1.70 - 2.70 m	1.32 - 2.41 m	14090.01.BIO	6.9 kg
Gate valve DN100-150 SQ19	0.80 - 0.95 m	0.40 - 0.58 m	13999.01.BIO	2.6 kg
	1.00 - 1.20 m	0.54 - 0.84 m	14099.01.BIO	3.2 kg
	1.20 - 1.50 m	0.64 - 1.05 m	14014.01.BIO	3.8 kg
	1.25 - 1.80 m	0.80 - 1.40 m	14015.01.BIO	4.5 kg
	1.50 - 2.00 m	0.95 - 1.64 m	14016.01.BIO	5.0 kg
Gate valve DN175/200 SQ24	0.90 - 1.00 m	0.36 - 0.44 m	13565.01.BIO	3.4 kg
	1.10 - 1.30 m	0.52 - 0.79 m	14017.01.BIO	4.3 kg
	1.25 - 1.80 m	0.77 - 1.25 m	14018.01.BIO	5.8 kg
	1.50 - 2.00 m	0.86 - 1.46 m	14019.01.BIO	6.5 kg
	1.70 - 2.70 m	1.21 - 2.19 m	14092.01.BIO	9.1 kg
Gate valve DN250-350 SQ27	1.00 - 1.10 m	0.37 - 0.49 m	14101.01.BIO	3.4 kg
	1.10 - 1.30 m	0.50 - 0.80 m	14020.01.BIO	4.4 kg
	1.30 - 1.80 m	0.71 - 1.15 m	14021.01.BIO	5.5 kg
	1.50 - 2.00 m	0.86 - 1.45 m	14023.01.BIO	6.5 kg
	1.80 - 2.70 m	1.16 - 2.05 m	14093.01.BIO	8.6 kg

\*Cover depth measurements depend on the height of the valve used, see p. 7

\*\*Other lengths available upon request.

### Tender text:

#### Telescopic Spindle Extension T2-GREEN for gate valves

A two-piece hot-dip galvanised steel rod accord. to DIN EN 10240 (alternatively in stainless steel), coupling (bottom adapter) made of GJS400-15, galvanised accord. to DIN EN 12329 und DIN 50961 (alternatively made of stainless steel AISI 304). Square cap (top adapter) made of GJS400-15, galvanised accord. to DIN EN 12329 and DIN 50961 (alternatively in stainless steel AISI 304). Toolless assembly of the spindle extension with a stainless steel clip-pin. Connection pins made of stainless steel 1.4301. Transport security of the rod minimum of 150N. Self-locking in every adjustable position through a PE sealing collar on the steel tube. Torques according to GW336. Two-piece Bio-PE protection tube system with a bonded centring cap, universal bell and sealing. Completely dirt-proof and water-repellent. Optional: Marking disc (double sided gas and water) as well as bell adapters/sealing inserts.



## Telescopic spindle extension T3 for service valves



①



Square cap SQ12/14

②



Centring cap

③



Tubes

④



Transport lock

⑤



PE-brake

⑥



Combi bell

⑦



Coupling

⑧



Clip-pin

⑨



Bell adapter

### Optional:



Marking discs



Special - Square cap

scan me!



## Telescopic spindle extension T3 for service valves



Valve Spindle square	CD* Cover depth	Total length (L)** Spindle extension	Article No.	Weight	PU
Service valve SQ12	0.70 - 1.00 m	0.47 - 0.73 m	10088.T3	2.0 kg	100
	0.85 - 1.30 m	0.62 - 1.02 m	14004.T3	2.5 kg	100
	1.00 - 1.50 m	0.78 - 1.33 m	14005.T3	3.0 kg	70
	1.25 - 1.80 m	0.93 - 1.63 m	14006.T3	3.5 kg	70
	1.50 - 2.00 m	1.03 - 1.80 m	14007.T3	4.0 kg	70
	1.70 - 2.70 m	1.42 - 2.38 m	14094.T3	5.0 kg	-

**PU = Deliveries only possible in pack units!**

\*Cover depth measurements depend on the height of the valve used, see p. 7

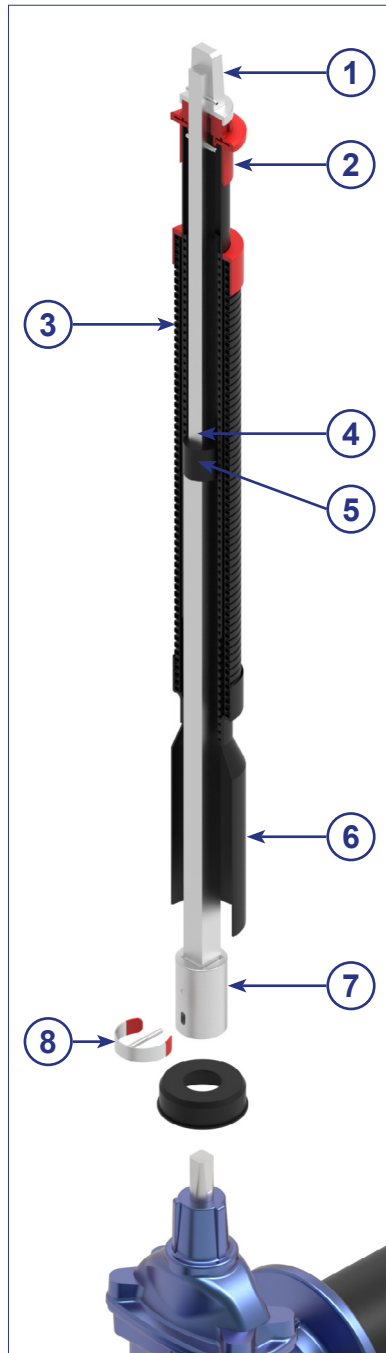
\*\*Other lengths available upon request.

### Tender text:

#### Telescopic Spindle Extension T3 for service valves

A two-piece hot-dip galvanised steel rod accord. to DIN EN 10240 (alternatively in stainless steel), coupling (bottom adapter) made of GJS400-15, galvanised accord. to DIN EN 12329 und DIN 50961 (alternatively made of stainless steel AISI 304). Square cap (top adapter) (accord. to DIN 3223 E) made of GJS400-15, galvanised accord. to DIN EN 12329 and DIN 50961 (alternatively in stainless steel AISI 304). Toolless assembly of the spindle extension with a stainless steel clip pin. Connection pins made of stainless steel 1.4301. Transport security of the rod minimum of 150N. Self-locking in every adjustable position through a PE sealing collar on the steel tube. Torques up to 140Nm. Three-piece PE protection tube system with a bonded centring cap, universal combi bell and sealing. Completely dirt-proof and water-repellent. Optional: Marking disc (double sided gas and water) as well as bell adapters/ sealing inserts.

## Telescopic spindle extension T3 for gate valves



Square cap SQ27/32



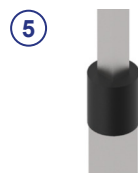
Centring cap



Tubes



Transport lock



PE-brake



Round bell

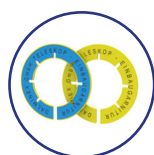


Coupling



Clip-pin

### Optional:



Marking discs



Bell adapter



Special - Square cap



## Telescopic spindle extension T3 for gate valves



Valve Spindle square	CD* Cover depth	Total length (L)** Spindle extension	Article No.	Weight	PU
Gate valve DN40/50 SQ14	1.00 - 1.50 m	0.70 - 1.20 m	14008.T3	4.2kg	70
	1.25 - 1.80 m	0.93 - 1.61 m	14009.T3	5.3 kg	70
	1.50 - 2.00 m	1.03 - 1.82 m	14010.T3	5.8 kg	70
	1.70 - 2.70 m	1.40 - 2.56 m	14089.T3	7.6 kg	-
	2.30 - 3.90 m	1.92 - 3.60 m	15901.T3	10.0 kg	-
Gate valve DN65/80 SQ17	1.00 - 1.50 m	0.69 - 1.14 m	14011.T3	4.2 kg	70
	1.25 - 1.80 m	0.85 - 1.45 m	14012.T3	5.0 kg	70
	1.50 - 2.00 m	0.95 - 1.65 m	14013.T3	5.4 kg	70
	1.70 - 2.70 m	1.32 - 2.41 m	14090.T3	7.3 kg	-
	2.30 - 3.90 m	1.92 - 3.60 m	15902.T3	10.2 kg	-
Gate valve DN100-150 SQ19	1.00 - 1.20 m	0.54 - 0.84 m	14099.T3	3.3 kg	100
	1.20 - 1.50 m	0.64 - 1.05 m	14014.T3	4.0 kg	70
	1.25 - 1.80 m	0.80 - 1.40 m	14015.T3	4.7 kg	70
	1.50 - 2.00 m	0.95 - 1.64 m	14016.T3	5.3 kg	70
	1.70 - 2.70 m	1.30 - 2.41 m	14091.T3	7.1 kg	-
	2.30 - 3.90 m	1.92 - 3.60 m	15903.T3	10.0 kg	-
Gate valve DN175/200 SQ24	1.10 - 1.30 m	0.52 - 0.79 m	14017.T3	4.5 kg	80
	1.25 - 1.80 m	0.77 - 1.25 m	14018.T3	6.0 kg	70
	1.50 - 2.00 m	0.86 - 1.46 m	14019.T3	6.7 kg	70
	1.70 - 2.70 m	1.21 - 2.19 m	14092.T3	9.5 kg	-
	2.50 - 3.50 m	1.80 - 2.80 m	15904.T3	12.0 kg	-
Gate valve DN250-350 SQ27	1.10 - 1.30 m	0.50 - 0.80 m	14020.T3	4.5 kg	80
	1.25 - 1.80 m	0.71 - 1.15 m	14021.T3	5.7 kg	70
	1.50 - 2.00 m	0.86 - 1.45 m	14023.T3	6.8 kg	70
	1.70 - 2.70 m	1.16 - 2.05 m	14093.T3	8.9 kg	-
	2.50 - 3.50 m	1.96 - 3.16 m	15905.T3	14.6 kg	-
Gate valve DN400/450 SQ32	telescopic version: max. torque 500 Nm				
	1.40 - 1.60 m	0.56 - 0.84 m	15017.T3	7.2 kg	-
	1.60 - 2.05 m	0.76 - 1.22 m	15018.T3	8.5 kg	-
	2.00 - 2.90 m	1.20 - 2.09 m	15019.T3	11.6 kg	-
Gate valve DN500/600 SQ36	telescopic version: max. torque 500 Nm				
	1.45 - 1.65 m	0.53 - 0.76 m	15021.T3	8.1 kg	-
	1.65 - 2.10 m	0.75 - 1.16 m	15050.T3	9.5 kg	-
	2.10 - 2.70 m	1.13 - 1.86 m	15022.T3	11.8 kg	-
	2.50 - 3.50 m	1.80 - 2.80 m	15907.T3	16.1 kg	-

**PU = Deliveries only possible in pack units!**

\*Cover depth measurements depend on the height of the valve used, see p. 7

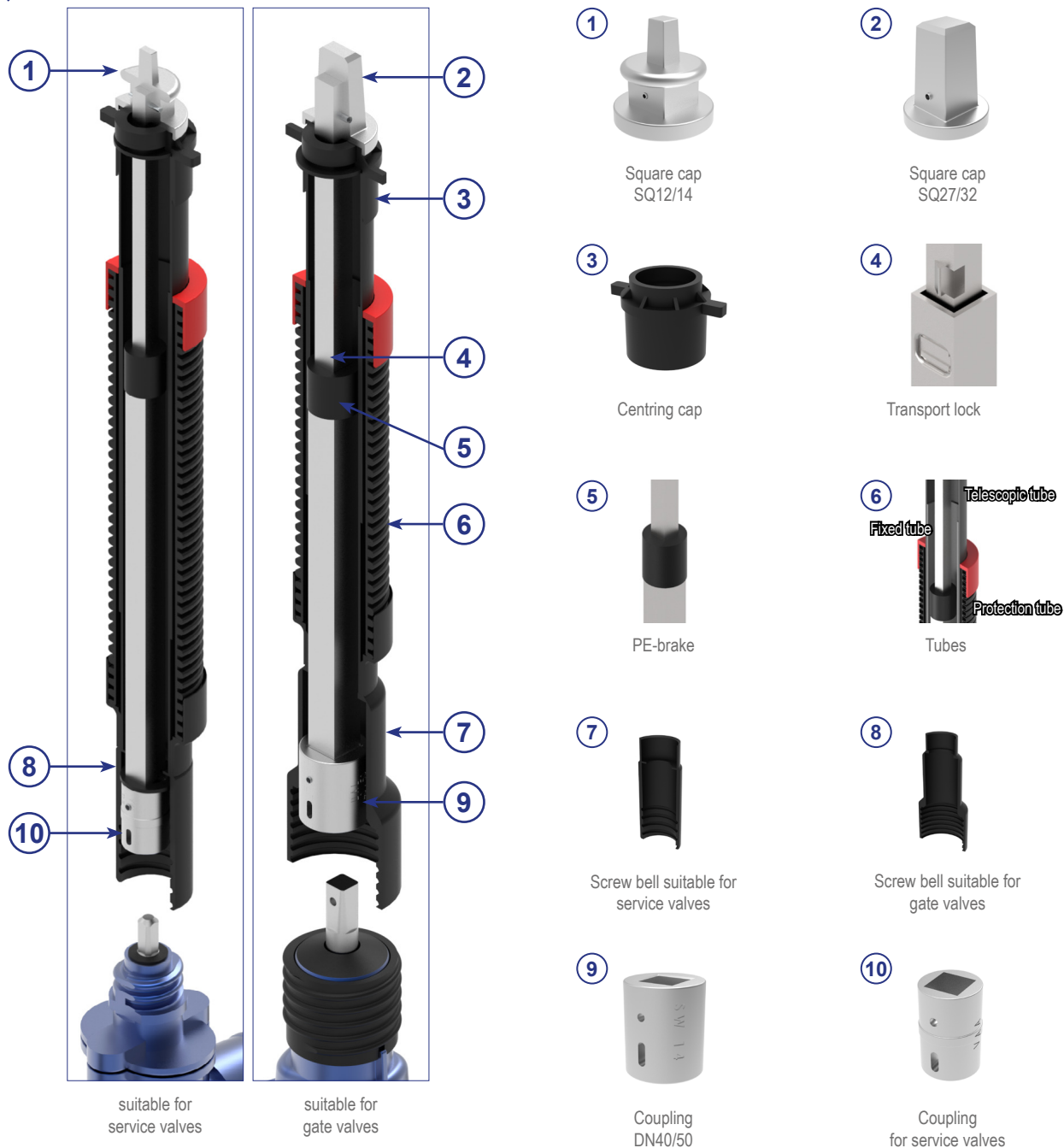
\*\*Other lengths available upon request.

### Tender text:

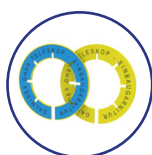
#### Telescopic Spindle Extension T3 for gate valves

A two-piece hot-dip galvanised steel rod accord. to DIN EN 10240 (alternatively in stainless steel), coupling (bottom adapter) made of GJS400-15, galvanised accord. to DIN EN 12329 und DIN 50961 (alternatively made of stainless steel AISI 304). Square cap (top adapter) accord. to DIN 3223 E made of GJS400-15, galvanised accord. to DIN EN 12329 and DIN 50961 (alternatively in stainless steel AISI 304). Suitable for operating key DIN 3223 C. Toolless assembly of the spindle extension with a stainless steel clip pin. Connection pins made of stainless steel 1.4301. Transport security of the rod minimum of 150n. Self-locking in every adjustable position through a PE sealing collar on the steel tube. Torques according to GW336. Three-piece PE protection tube system with a bonded centring cap, universal bell and sealing. Completely dirt-proof and water-repellent. Optional: Marking disc (double sided gas and water) as well as bell adapters/sealing inserts.

## Telescopic spindle extension T3 with screw bell



### Optional:



Marking discs



Special - Square cap



## Telescopic spindle extension T3 for service valves with screw bell



Valve Spindle square	CD* Cover depth	Article No.	Weight
Service valve SQ12	0.75 - 1.10 m	14072.HAW	2.3 kg
	1.00 - 1.50 m	14073.HAW	3.1 kg
	1.30 - 2.00 m	14074.HAW	3.8 kg
	1.50 - 2.50 m	14075.HAW	4.5 kg

\*Other lengths available upon request.

PE-screw bell with suitable connection to valve.  
The screw connection is without connecting pin.

## Telescopic spindle extension T3 for gate valves with screw bell

Valve Spindle square	CD* Cover depth	Article No.	Weight
Gate valve DN40/50 SQ14	0.75 - 1.00 m	14076	3.2 kg
	1.00 - 1.45 m	14077	4.4 kg
	1.30 - 2.05 m	14078	5.9 kg
	1.70 - 2.50 m	20325	7.9 kg
Gate valve DN65/80 SQ17	0.75 - 1.00 m	14079	3.3 kg
	1.00 - 1.40 m	14080	4.4 kg
	1.30 - 2.00 m	14081	5.6 kg
	1.70 - 2.50 m	20326	7.5 kg
Gate valve DN100-150 SQ19	0.75 - 1.00 m	14082	2.9 kg
	1.00 - 1.30 m	14083	4.1 kg
	1.30 - 1.90 m	14084	5.4 kg
	1.70 - 2.50 m	20327	7.4 kg
Gate valve DN200 SQ24	1.10 - 1.35 m	14085	4.5 kg
	1.30 - 1.85 m	14086	6.0 kg
	1.70 - 2.50 m	14112	9.5 kg
Gate valve DN250/300 SQ27 with Round bell	1.20 - 1.50 m	14087	5.5 kg
	1.50 - 1.80 m	14088	6.8 kg
	2.00 - 2.50 m	20328	9.3 kg

\*Other lengths available upon request.

PE-screw bell with suitable connection to valve.  
The screw connection is without connecting pin.

### Tender text:

#### Telescopic Spindle Extension T3 with screw bell

A two-piece hot-dip galvanised steel rod accord. to DIN EN 10240 (alternatively in stainless steel), coupling (bottom adapter) made of GJS400-15, galvanised accord. to DIN EN 12329, square cap (top adapter) made of GJS400-15, galvanised accord. to DIN EN 12329 and DIN 50961 (alternatively in stainless steel AISI 304). Suitable for operating key DIN 3223 C or E. Toolles assembly of the spindle extension with a stainless steel clip pin. Connection pins made of stainless steel 1.4301. Transport security of the rod minimum of 150 N. Self-locking in every adjustable position through a PE sealing collar on the steel tube. Torques accord. to GW336. Three-piece PE protection tube system with an additional corrugated protection tube, bonded centring cap and screw bell. Completely dirt-proof and water-repellent.



## Alternative solutions - Telescopic spindle extensions T3



### Tender text:

#### Telescopic Spindle Extension T3 - Stainless steel (DIN3223 C and E)

A two-piece stainless steel rod (1.4301), coupling (bottom adapter) for spindle and shaft and square cap (accord. to DIN3223 C or E) made of stainless steel AISI 304. Toolles assembly of the spindle extension with a stainless steel clip-pin. Connection pins made of stainless steel 1.4301. Transport security of the rod minimum of 150N. Self-locking in every adjustable position with a PE sealing collar on the steel tube. Torques up to 1000Nm (oval type wedge gate valve with square tube size 30mm). Three-piece PE protection tube system with an additional corrugated protection tube, bonded centring cap and either a universal combi bell (Form C) or a universal bell (size Ø80mm or Ø100mm (Form E)). Completely dirt-proof and water-repellent. Optional: Marking disc (double sided gas and water) as well as bell adapters/sealing inserts.



### Tender text:

#### Telescopic Spindle Extension T3 for ball valves with square connection

A two-piece hot-dip galvanised steel rod accord. to DIN EN 10240 (alternatively in stainless steel), square cap (top adapter) made of GJS400-15, galvanised accord. to DIN EN 12329 and DIN 50961 (alternatively in stainless steel AISI 304) with connection drillings accord. to GW336. Suitable for operating key DIN 3223 C or E (DN25-50). Toolles assembly of the spindle extension with a stainless steel clip-pin. Connection pins made of stainless steel 1.4301. Transport security of the rod minimum of 150N. Self-locking in every adjustable position with a PE sealing collar on the steel tube. Torques accord. to GW336. Three-piece PE protection tube system with an additional corrugated protection tube, bonded centring cap and universal round bell accord. to GW336. Completely dirt-proof and water-repellent. Incl.: Integrated position indicator „1/4 turns“.



### Tender text:

#### Telescopic Spindle Extension T3 for ball valves with polygon

A two-piece hot-dip galvanised steel rod accord. to DIN EN 10240 (alternatively in stainless steel), square cap (top adapter) made of GJS400-15, galvanised accord. to DIN EN 12329 and DIN 50961 (alternatively in stainless steel AISI 304) with connection drillings accord. to GW336. Suitable for operating key DIN 3223 C or E (DN25-50). Toolles assembly of the spindle extension with a stainless steel clip pin. Connection pins made of stainless steel 1.4301. Transport security of the rod minimum of 150N. Self-locking in every adjustable position through a PE sealing collar on the steel tube. Torques accord. to GW336. Three-piece PE protection tube system with an additional corrugated protection tube, bonded centring cap and universal round bell accord. to GW336. Completely dirt-proof and water-repellent. Incl.: Integrated position indicator „1/4 turns“.

## Alternative solutions - Telescopic spindle extensions T3



### Tender text:

#### Telescopic Spindle Extension T3 with position indicator

A two-piece hot-dip galvanised steel rod accord. to DIN EN 10240 (alternatively in stainless steel), coupling (bottom adapter) made of GJS400-15, galvanised accord. to DIN EN 12329, square cap (top adapter) made of GJS400-15, galvanised accord. to DIN EN 12329 and DIN 50961 (alternatively in stainless steel AISI 304). Suitable for operating key DIN 3223 C.

Toolles assembly of the spindle extension with a stainless steel clip pin. Connection pins made of stainless steel 1.4301. Transport security of the rod minimum of 150N. Self-locking in every adjustable position through a PE sealing collar on the steel tube. Torques accord. to GW336. Three-piece PE protection tube system with an additional corrugated protection tube, bonded centring cap and universal bell accord. to GW336. Completely dirt-proof and water-repellent. Incl.: Integrated position indicator „1/4 turns“.



### Tender text:

#### Telescopic Spindle Extension T3 - waterproof

A two-piece hot-dip galvanised steel rod accord. to DIN EN 10240 (alternatively in stainless steel), coupling (bottom adapter) made of GJS400-15, galvanised accord. to DIN EN 12329, square cap (top adapter) made of GJS400-15, galvanised accord. to DIN EN 12329 and DIN 50961 (alternatively in stainless steel AISI 304). Suitable for operating key DIN 3223 C.

Toolles assembly of the spindle extension with a stainless steel clip pin. Connection pins made of stainless steel 1.4301. Transport security of the rod minimum of 150 N. Self-locking in every adjustable position through a PE sealing collar on the steel tube. Torques accord. to GW336. Three-piece PE protection tube system with an additional corrugated protection tube, bonded centring cap and flange bell (F10). Completely dirt-proof and water-repellent.



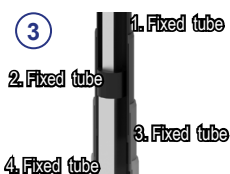
## Telescopic spindle extension T4 for service valves



Square cap SQ12/14



Centring cap



Tubes



Transport lock



PE-brake



Combi bell



Coupling

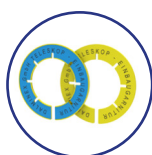


Clip-pin



Bell adapter

### Optional:



Marking discs



Special - Square cap



Extension adapter



## Telescopic spindle extension T4 for service valves



Valve Spindle square	CD* Cover depth	Total length (L)** Spindle extension	Article No.	Weight
Service valve SQ12	0.65 - 1.00 m	0.39 - 0.74 m	21024	2.1 kg
	1.00 - 1.80 m	0.73 - 1.52 m	21069	3.4 kg

\*Cover depth measurements depend on the height of the valve used, see p. 7

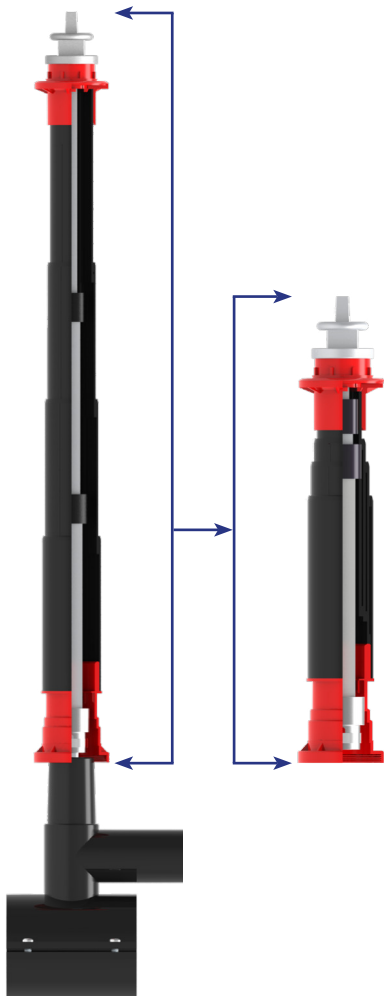
\*\*Other lengths available upon request.

### Tender text:

#### Telescopic Spindle Extension T4 for service valves with 4-fold adjustability

A three-piece rod made of stainless steel 1.4301, coupling (bottom adapter) precision casting, galvanised accord. to DIN EN 12329 und DIN 50961 (alternatively made of stainless steel AISI 304), square cap (top adapter) (accord. to DIN 3223 E) made of GJS400-15, galvanised accord. to DIN EN 12329 and DIN 50961 (alternatively in stainless steel AISI 304). Toolless assembly of the spindle extension with a stainless steel clip pin. Connection pins made of stainless steel 1.4301. Transport security of the rod minimum of 150N. Self-locking in every adjustable position through a PE sealing collar on the steel tube. Torques up to 250Nm. Four-piece PE protection tube system with a bonded centring cap, universal combi bell with sealing/sealing insert and a grooved and suspension system as rotation lock. Completely dirt-proof and water-repellent. Optional: Marking disc (double sided gas and water) as well as bell adapters/sealing inserts.

### 30% more adjustability

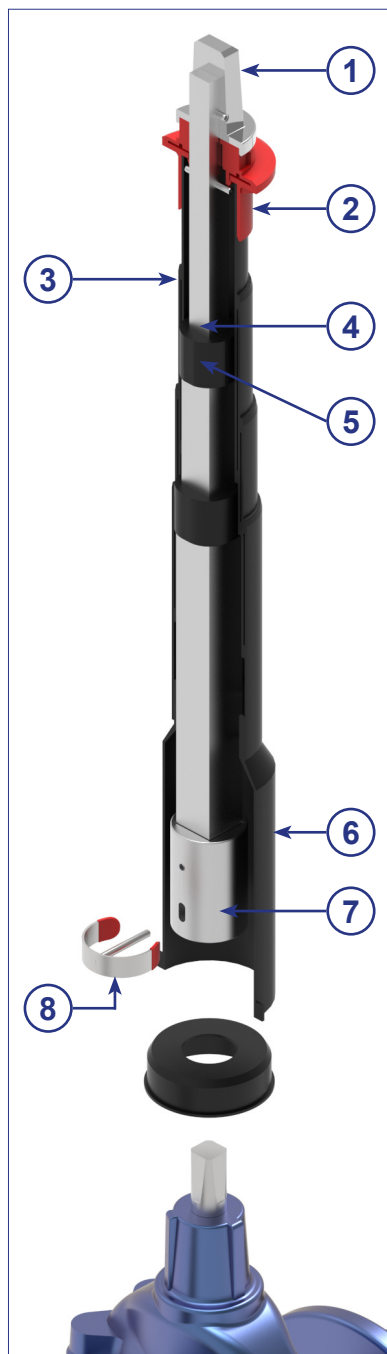


### Secure extension system



Subject to technical modifications!

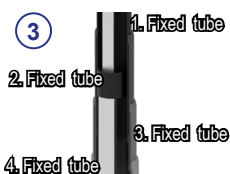
## Telescopic spindle extension T4 for gate valves



Square cap SQ27/32



Centring cap



Tubes



Transport lock



PE-brake



Round bell



Coupling



Clip-pin

### Optional:



Marking discs



Bell adapter



Special - Square cap



## Telescopic spindle extension T4 for gate valves



Valve Spindle square	CD* Cover depth	Total length (L)** Spindle extension	Article No.	Weight
Gate valve DN40/50 SQ14	0.80 - 1.15 m	0.39 - 0.74 m	21025	3.4 kg
Gate valve DN65/80 SQ17	0.85 - 1.20 m		21026	3.6 kg
Gate valve DN100-150 SQ19	0.90 - 1.25 m		21027	3.5 kg
Gate valve DN200 SQ24	0.90 - 1.25 m		22879	3.5 kg
Gate valve DN250-350 SQ27	1.01 - 1.36 m		22880	3.6 kg
Gate valve DN40/50 SQ14	0.95 - 1.85 m	0.67 - 1.54 m	21198	4.6 kg
Gate valve DN65/80 SQ17	1.00 - 1.90 m		21199	5.3 kg
Gate valve DN100-150 SQ19	1.10 - 1.95 m		21200	5.1 kg
Gate valve DN200 SQ24	1.18 - 2.05 m		22877	5.2 kg
Gate valve DN250-350 SQ27	1.29 - 2.16 m		22878	5.2 kg

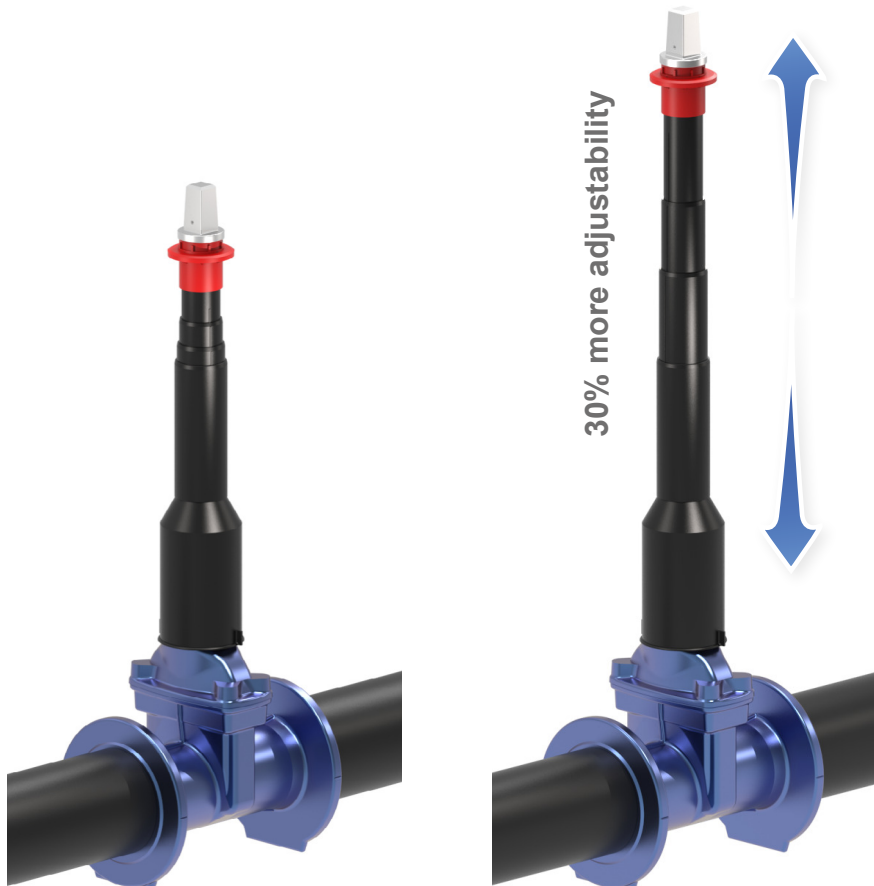
\*Cover depth measurements depend on the height of the valve used, see p. 7

\*\*Other lengths available upon request.

### Tender text:

#### Telescopic Spindle Extension T4 for gate valves with 4-fold adjustability

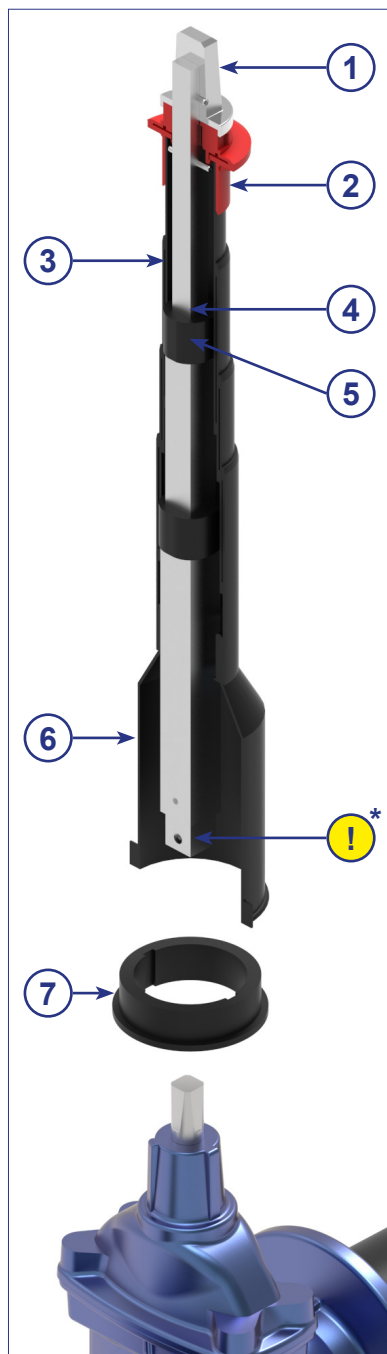
A three-piece rod made of stainless steel 1.4301, coupling (bottom adapter) precision casting, galvanised accord. to DIN EN 12329 und DIN 50961 (alternatively made of stainless steel AISI 304), square cap (top adapter) (accord. to DIN 3223 E) made of GJS400-15, galvanised accord. to DIN EN 12329 and DIN 50961 (alternatively in stainless steel AISI 304). Toolless assembly of the spindle extension with a stainless steel clip pin. Connection pins made of stainless steel 1.4301. Transport security of the rod minimum of 150N. Self-locking in every adjustable position through a PE sealing collar on the steel tube. Torques up to 500Nm. Four-piece PE protection tube system with a bonded centring cap, universal combi bell with sealing/sealing insert and a grooved and suspension system as rotation lock. Completely dirt-proof and water-repellent. Optional: Marking disc (double sided gas and water) as well as bell adapters/sealing inserts.



30% more adjustability

Subject to technical modifications!

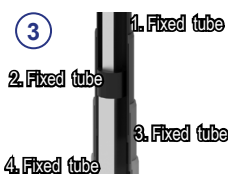
## Telescopic spindle extension T4X for gate valves



Square cap SQ27/32



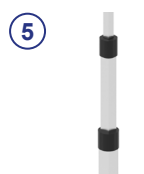
Centring cap



Tubes



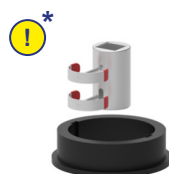
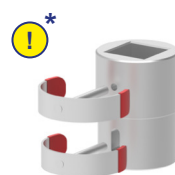
Transport lock



PE-brake



Round bell

Coupling  
DN40/50 SQ14/17Coupling  
DN65/80 SQ17/19Coupling  
DN100-150 SQ19/22Coupling  
DN175/200 SQ24/27

### Optional:



Marking discs

Bell adapter  
for extensionCoupling  
DN250-300 SQ27/32

Bell adapter

\*The required couplings and bell adapter can be found on p. 29 below „Accessories suitable for Telescopic spindle extension T4X“.



## Telescopic spindle extension T4X for gate valves



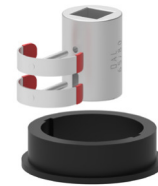
Valve Spindle square	CD* Cover depth	Total length (L)** Spindle extension	Article No.	Weight
Gate valve DN40/50 SQ14	0.80 - 1.15 m	0.47 - 0.82 m	22323	2.5 kg
Gate valve DN65/80 SQ17	0.85 - 1.20 m			
Gate valve DN100-150 SQ19	0.90 - 1.25 m			
Gate valve DN200 SQ24	1.00 - 1.40 m			
Gate valve DN250/300 SQ27	1.20 - 1.50 m			
Gate valve DN40/50 SQ14	0.95 - 1.85 m	0.67 - 1.54 m	22324	4.0 kg
Gate valve DN65/80 SQ17	1.00 - 1.90 m			
Gate valve DN100-150 SQ19	1.10 - 1.95 m			
Gate valve DN200 SQ24	1.20 - 2.00 m			
Gate valve DN250/300 SQ27	1.30 - 2.10 m			

\*Cover depth measurements depend on the height of the valve used, see p. 7

\*\*Other lengths available upon request.

## Accessories suitable for Telescopic spindle extension T4X

Couplings					
Description	Valve	SQ	Article No.	Material	Weight
Coupling incl. 2xClip-pins and bell adapter Ø100 mm	DN40/50	14/17 mm	12138.00-VK-VZ	GJS-400-15 VZ	0.8 kg
	DN65/80	17/19 mm	12332.00-VK-VZ	GJS-400-15 VZ	0.6 kg
	DN100-150	19/22 mm	12333.00-VK-VZ	GJS-400-15 VZ	0.8 kg
Coupling incl. 2xClip-pins	DN175/200	24/27 mm	12140.25-VK-VZ	GJS-400-15 VZ	0.8 kg
	DN250-300	27/32 mm	12131.25-VK-GE	GJS-400-15 VZ	1.3 kg



Coupling for extension with set screw					
Description	Valve	SQ	Article No.	Material	Weight
Coupling for extension	DN250-300	27/32 mm	12131.25-VK-GE	GJS-400-15 VZ	1.3 kg



Bell adapter			
Description	Valve	Article No.	Weight
Bell adapter Ø100 mm	Ø80 mm	22941	0.03 kg



Bell adapter for extension			
Description	Diameter	Article No.	Weight
Bell adapter for extension	Ø100 mm	12514.14	0.06 kg



## Tender text:

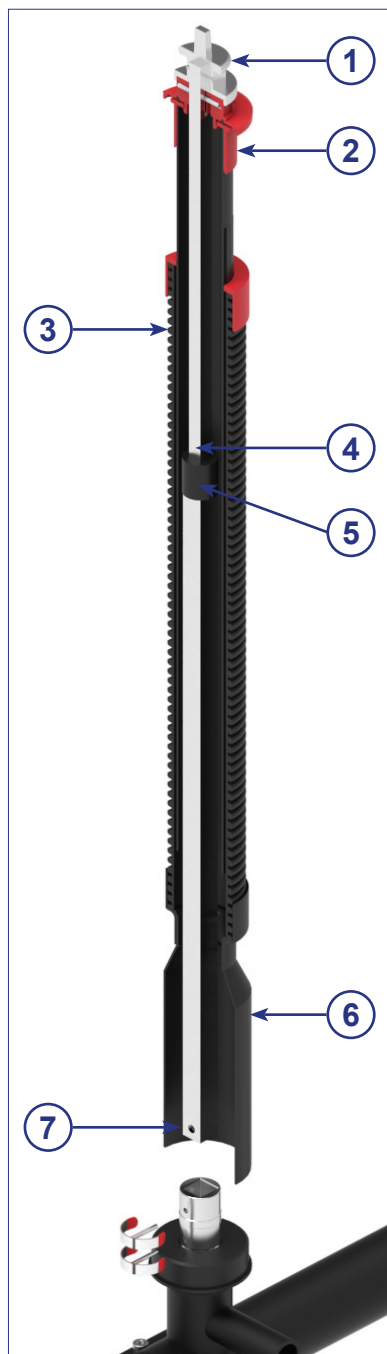
## Telescopic Spindle Extension T4X for gate valves with 4-fold adjustability

A three-piece rod made of stainless steel 1.4301, coupling (bottom adapter) precision casting, galvanised accord. to DIN EN 12329 und DIN 50961 (alternatively made of stainless steel AISI 304), square cap (top adapter) (accord. to DIN 3223 E) made of GJS400-15, galvanised accord. to DIN EN 12329 und DIN 50961 (alternatively in stainless steel AISI 304). Toolless assembly of the spindle extension with a stainless steel clip pin. Connection pins made of stainless steel 1.4301. Transport security of the rod minimum of 150N. Self-locking in every adjustable position through a PE sealing collar on the steel tube. Torques up to 500Nm. Four-piece PE protection tube system with a bonded centring cap, universal combi bell with sealing/sealing insert and a grooved and suspension system as rotation lock. Completely dirt-proof and water-repellent. Optional: Marking disc (double sided gas and water) as well as bell adapters/sealing inserts.

Subject to technical modifications!



### Telescopic spindle extension T3 as per DVGW GW336 for service valves



①



Square cap SQ12/14  
as per DVGW GW336

②



Centring cap

③



Tubes

④



Transport lock 150N  
as per DVGW GW336

⑤



PE-brake

⑥



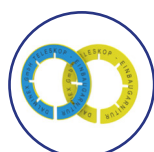
Round bell as per  
DVGW GW33

⑦



Square bar with drilling  
as per DVGW GW336

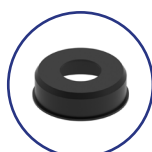
#### Optional:



Marking discs



Adapter set



Bell adapter



Coupling



Clip-pin



## Telescopic spindle extension T3 as per DVGW GW336 for service valves



Valves	Operating head	Connection to coupling	Total length (L)* Spindle extension	Article No.	Weight	Article No.	Weight
Service valve DN ≤ 50 Ball valve DN ≤ 50	DIN 3223 E	VKT20x20 mm Ø80 mm	0.40 - 0.65 m	13997.GW336	1.4 kg	13997.01.GW336	1.4 kg
			0.65 - 1.15 m	14008.GW336	2.6 kg	14008.01.GW336	2.2 kg
			0.80 - 1.45 m	14009.GW336	3.4 kg	14009.01.GW336	2.9 kg
			0.90 - 1.55 m	14010.GW336	3.7 kg	14010.01.GW336	3.1 kg
			1.37 - 2.45 m	14089.GW336	5.1 kg	14089.01.GW336	4.4 kg

\*Other lengths available upon request.

Telescopic spindle extensions are as per the DVGW worksheet GW336-1 (A) (09/2010)  
Testing as per DVGW test schedule GW336-2 (P) (09/2010)

## Adapter set for System DVGW GW336

Version	Coupling	Bell adapter	Article No.	Weight
Coupling 2xClip-pins Valve adapter universal	Service valve	Ø80 mm	14004.GW336A	0.4 kg

### Tender text:

#### Telescopic Spindle Extension T3 as per DVGW GW336 (DVGW tested) for service valves

Telescopic spindle extension GW336 with standardised intersection accord. to worksheet DVGW336-1 (A), Edition September 2010. DVGW tested accord. to technical examination basis DVGW 336-2 (P). Two-piece hot dip galvanised steel rod accord. to DIN 10240 (alternatively in stainless steel), without coupling (bottom adapter), with connection drilling, square cap (top adapter) (accord. to DIN 3223 E) made of GJS400-15, galvanised accord. to DIN EN 12329 and DIN 50961 (alternatively in stainless steel AISI 304). Connection pins made of stainless steel 1.4301. Transport security of the rod minimum of 150N. Self-locking in every adjustable position through a PE sealing collar on the steel tube. Torques accord. to GW336-2 (P). Three-piece PE protection tube system with a bonded centring cap and bell accord. to GW336-1 (A). Completely dirt-proof and water-repellent. Optional: Marking disc (double sided gas and water) as well as bell adapters/sealing inserts.

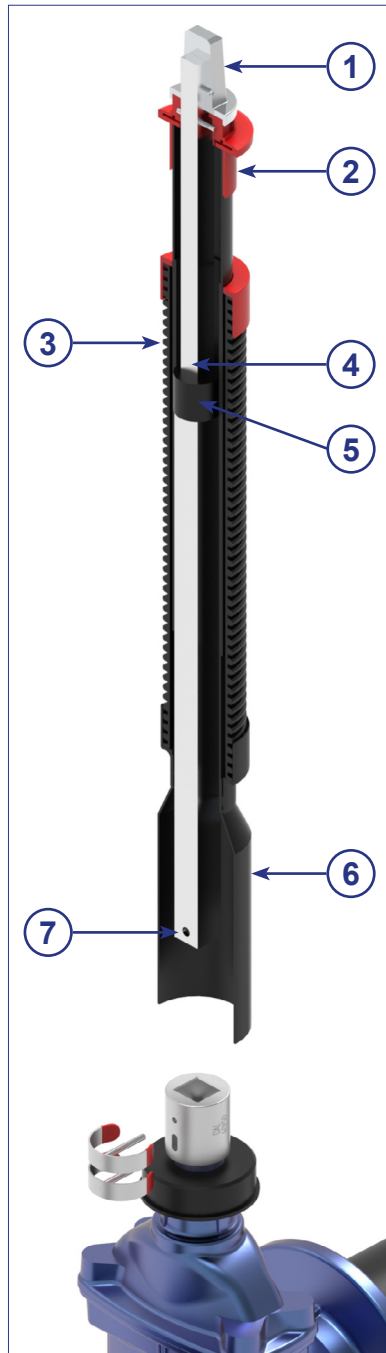
#### Intersection size I:

Square 20mm, protection tube bell Ø 80mm for service valves,  
service valves ≤ DN 50 and ball valve ≤ DN 50

Type 1: variant with square cap 12/14 (top adapter), torques max. 140 Nm

Type 2: variant without square cap (forged steel 12/14), torques max. 100 Nm

### Telescopic spindle extension T3 as per DVGW GW336 for gate valves



①



Square cap SQ27/32  
as per DVGW GW336

②



Centring cap

③



Tubes

④



Transport lock 150N  
as per DVGW GW336

⑤



PE-brake

⑥



Round bell as per  
DVGW GW336

⑦



Square bar with drilling  
as per DVGW GW336

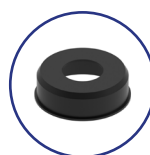
#### Optional:



Marking discs



Adapter set



Bell adapter



Coupling



Clip-pin

scan me!



## Telescopic spindle extension T3 as per DVGW GW336 for gate valves



Valves	Operating head	Connection to coupling	Total length (L)* Spindle extension	Article No.	Weight
Gate valve 40 ≤ DN ≤ 150	DIN 3223 C	SQ25x25 mm Ø80 mm	0.36 - 0.56 m	13999.GW336	2.0 kg
Ball valve 65 ≤ DN ≤ 1000			0.60 - 1.01 m	14014.GW336	3.1 kg
Butterfly valve 100 ≤ DN ≤ 1000			0.76 - 1.36 m	14015.GW336	3.9 kg
			0.91 - 1.60 m	14016.GW336	4.5 kg
			1.26 - 2.36 m	14091.GW336	6.4 kg
Gate valve 200 ≤ DN ≤ 350	DIN 3223 C	SQ30x30 mm Ø100 mm	0.33 - 0.40 m	13565.GW336	2.6 kg
			0.49 - 0.76 m	14017.GW336	3.6 kg
			0.74 - 1.22 m	14018.GW336	5.1 kg
			0.82 - 1.42 m	14019.GW336	5.8 kg
			1.17 - 2.12 m	14092.GW336	8.6 kg

\*Other lengths available upon request.

Telescopic spindle extensions are as per the DVGW worksheet GW336-1 (A) (09/2010)  
Testing as per DVGW test schedule GW336-2 (P) (09/2010)

## Adapter set for System DVGW GW336

Version	Coupling	Bell adapter	Article No.	Weight
Coupling 2xClip-pins Valve adapter universal	DN40/50 (SQ14)	Ø80 mm	13997.GW336A	1.8 kg
	DN65/80 (SQ17)	Ø80 mm	13998.GW336A	2.9 kg
	DN100-150 (SQ19)	Ø80 mm	13999.GW336A	3.7 kg
	DN175/200 (SQ24)	Ø100 mm	14017.GW336A	3.4 kg
	DN250-350 (SQ27)	Ø100 mm	14020.GW336A	6.3 kg

### Tender text:

#### Telescopic Spindle Extension T3 as per DVGW GW336 (DVGW tested) for gate valves

**1)** Telescopic spindle extension GW336 with standardised intersection accord. to worksheet DVGW336-1 (A), Edition September 2010. DVGW tested accord. to technical examination basis DVGW 336-2 (P). Two-piece hot-dip galvanised steel rod accord. to DIN 10240 (alternatively in stainless steel), without coupling (bottom adapter), with connection drilling, square cap (top adapter) (accord. to DIN 3223 E) made of GJS400-15, galvanised accord. to DIN EN 12329 and DIN 50961 (alternatively in stainless steel AISI 304). Connection pins made of stainless steel 1.4301. Transport security of the rod minimum of 150N. Self-locking in every adjustable position through a PE sealing collar on the steel tube. Torques accord. to GW336-2 (P). Three-piece PE protection tube system with a bonded centring cap and bell accord. to GW336-1 (A). Completely dirt-proof and water-repellent. Optional: Marking disc (double sided gas and water) as well as bell adapters/sealing inserts.

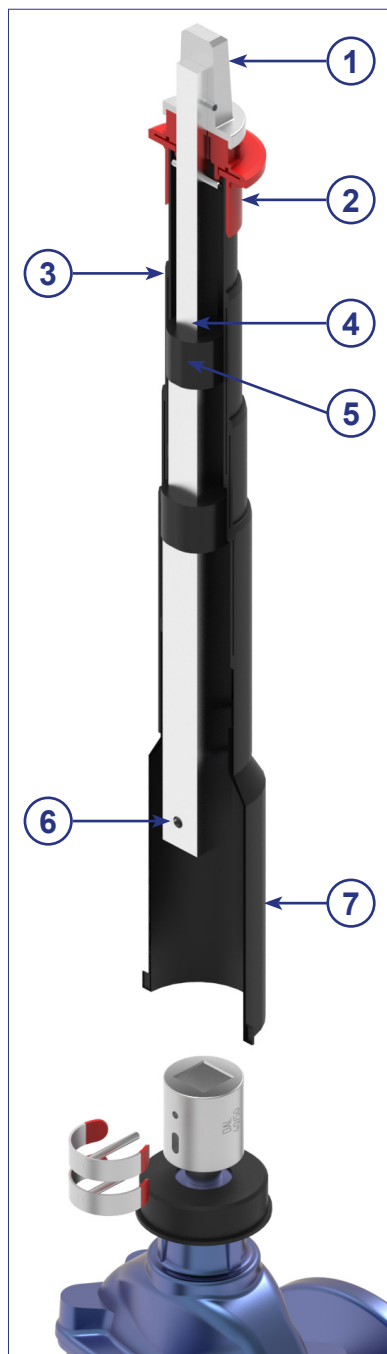
#### 2) Intersection size II:

Inner square 25mm, protection tube bell Ø 80mm for gate valve 40 ≤ DN ≤ 150,  
ball valve 65 ≤ DN ≤ 1000, butterfly valve 100 ≤ DN ≤ 1000  
torques max. 250 Nm

#### 3) Interaction size III:

Inner square 30 mm, protection tube bell Ø 100 mm for gate valve 200 ≤ DN ≤ 350  
torques max. 440 Nm

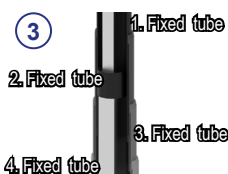
### Telescopic spindle extension T4 as per DVGW GW336 for gate valves



1 Square cap SQ27/32  
as per DVGW GW336



2 Centring cap



Tubes



4 Transport lock 150N  
as per DVGW GW336



PE-brake

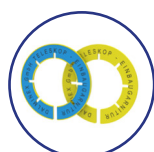


6 Square bar with drilling  
as per DVGW GW336



7 Round bell as per  
DVGW GW336

#### Optional:



Marking discs



Adapter set



Bell adapter



Coupling



Clip-pin



## Telescopic spindle extension T4 as per DVGW GW336 for gate valves



Valve	Operating head	Connection to coupling	Total length (L)* Spindle extension	Article No.	Weight
Gate valve 40 ≤ DN ≤ 150	DIN 3223 C	SQ25x25 mm Ø80 mm	0.39 - 0.74 m	21195	2.6 kg
Ball valve 65 ≤ DN ≤ 1000			0.67 - 1.54 m	21196	4.4 kg
Butterfly valve 100 ≤ DN ≤ 1000					
Gate valve 200 ≤ DN ≤ 350	DIN 3223 C	SQ30x30 mm Ø100 mm	0.39 - 0.74 m	22321	2.7 kg
			0.67 - 1.54m	22322	4.5 kg

\*Other lengths available upon request.

## Adapter sets for System DVGW GW336

Version	Coupling	Bell adapter	Article No.	Weight
Coupling 2xClip-pins Valve adapter universal	DN40/50 (SQ14)	Ø80 mm	13997.GW336A	1.8 kg
	DN65/80 (SQ17)	Ø80 mm	13998.GW336A	2.9 kg
	DN100-150 (SQ19)	Ø80 mm	13999.GW336A	3.7 kg
	DN175/200 (SQ24)	Ø100 mm	14017.GW336A	3.4 kg
	DN250-350 (SQ27)	Ø100 mm	14020.GW336A	6.3 kg

### Tender text:

#### Telescopic spindle extension T4 as per DVGW GW336 (DVGW tested) for gate valves

1) Telescopic spindle extension GW336 with standardised intersection accord. to worksheet DVGW336-1 (A), Edition September 2010. DVGW tested accord. to technical examination basis DVGW 336-2 (P). Two-piece hot-dip galvanised steel rod accord. to DIN 10240 (alternatively in stainless steel), without coupling (bottom adapter), with connection drilling, square cap (top adapter) (accord. to DIN 3223 E) made of GJS400-15, galvanised accord. to DIN EN 12329 and DIN 50961 (alternatively in stainless steel AISI 304). Connection pins made of stainless steel 1.4301. Transport security of the rod minimum of 150N. Self-locking in every adjustable position through a PE sealing collar on the steel tube. Torques accord. to GW336-2 (P). Three-piece PE protection tube system with a bonded centring cap and bell accord. to GW336-1 (A). Completely dirt-proof and water-repellent. Optional: Marking disc (double sided gas and water) as well as bell adapters/sealing inserts.

#### 2) Intersection size II:

Inner square 25mm, protection tube bell Ø 80mm for gate valve 40 ≤ DN ≤ 150,  
ball valve 65 ≤ DN ≤ 1000, butterfly valve 100 ≤ DN ≤ 1000  
torques max. 250 Nm

#### Interaction size III:

Inner square 30 mm, protection tube bell Ø 100 mm for gate valve 200 ≤ DN ≤ 350  
torques max. 440 Nm

## The innovative solution for spindle extensions and posit

With the DALMINEX installation system the DALMINEX position indicators as well as spindle extensions, also spindle extensions from other manufacturers, can be fixed easily, either vertically or horizontally. After installing the surface box DIN 4056-2, the top part of the spindle extension as well as the position indicator remain centred and cannot sink down any further.

**The DALMINEX installation system consists of the following components:**

- DALMINEX fixing disc
- DALMINEX support plate
- Surface box DIN 4056-2



**DALMINEX fixing disc, can be used on both sides**

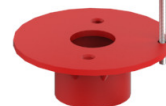


Side 1



Side 2

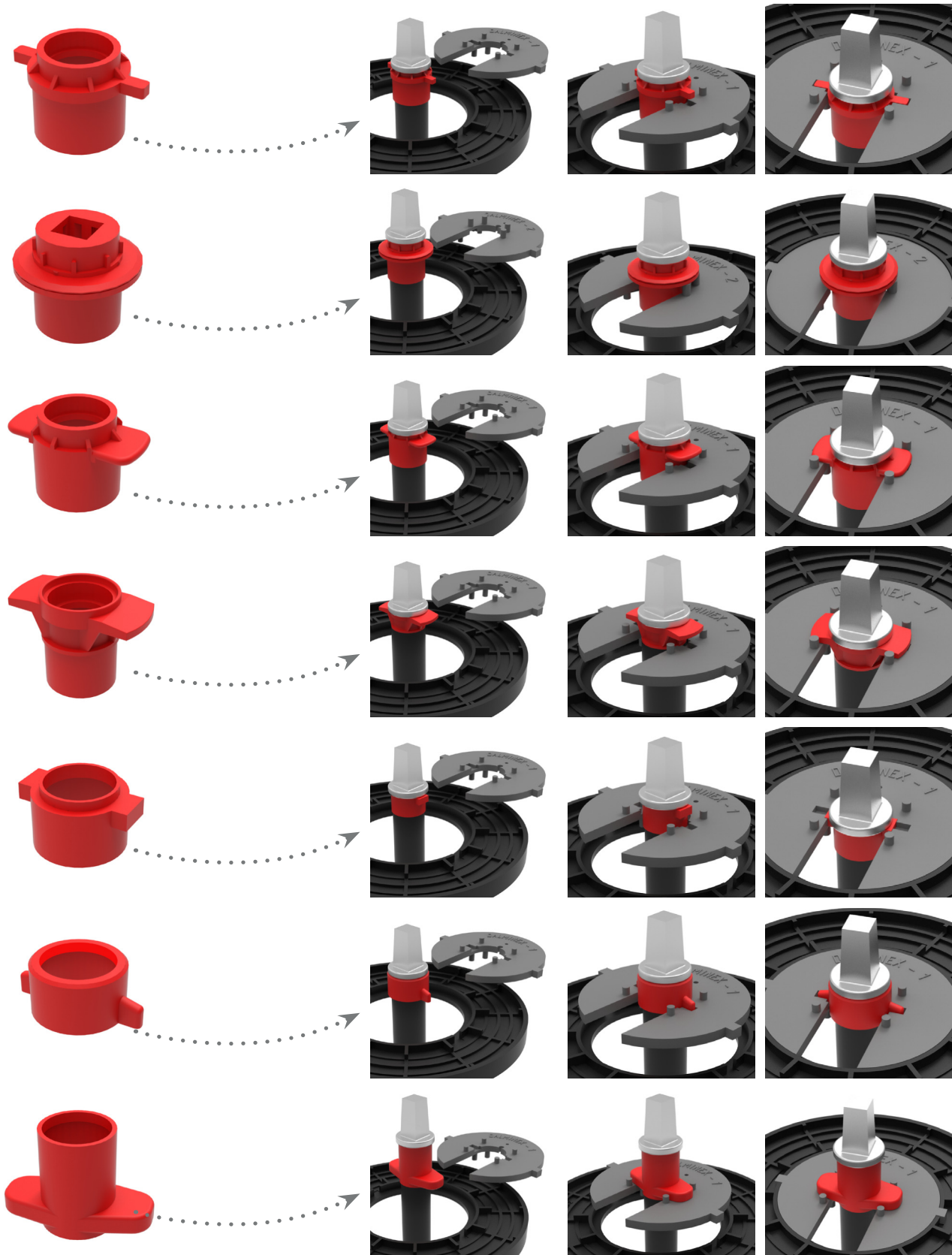
**DALMINEX support plate suitable for DALMINEX fixing disc and surface box acc. to DIN 4056 Type 2**



scan me!



## ion indicators in pipeline construction





## Bell adapters / Sealing inserts

Suitable for valve	Description	Material	Article No.	Weight
EWE, VAG	Type I	PE	12511.01	0.04 kg
AVK-Mittelmann SVK VA	Insert for Type I	PE	12511.02	0.01 kg
Z-Schelle Keulahütte Lüneburg	Type II	PE	12511.03	0.03 kg
ERHARD (semicircle)	Type III	PE	12511.04	0.04 kg
EWE	-	PE	12511.00	0.01 kg
ASP, VOIGT, Friatec DAV d63 AVK Service valve	Type IV	PE	12511.05	0.05 kg
Hawle (thread))	Type VI	PE	12511.07	0.05 kg
Belgicast Innen	Type III (Ø41 mm)	PE	12511.41	0.09 kg
FUCOLI	Ø81x46 mm	PE	12511.08	0.01 kg
Universal Service valve	Ø81x36 mm	EPDM	12511.09	0.01 kg
Universal DN40-150	Ø81x36 mm	EPDM	12514.11K	0.01 kg
Universal DN200-350	Ø100x36 mm	EPDM	12514.14	0.01 kg
AWP	Screw thread DVGW GW336	PE	12514.15	0.01 kg



## Locking device for service valves

Description	Article No.	Weight
Kit complete for spindle extension square cap 12/14 mm	17000	0.4 kg
Kit complete for spindle extension triangular cap 15/18 mm	17010	0.4 kg
Padlock, separate	17020	0.2 kg
Key, same locking, 1 pc.	17020.S	0.2 kg



## Locking device for gate valves

Description	Article No.	Weight
Kit complete for spindle extension square cap 27/32 mm	17100	2.2 kg
Kit complete for spindle extension triangular cap 33/43 mm	17101	2.2 kg
Padlock, separate	17020	0.2 kg
Key, same locking, 1 pc.	17020.S	0.2 kg



## Marking discs for Telescopic Spindle Extension (Locking device)

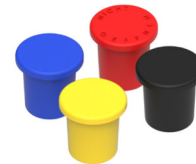
Imprint	Color	Article No.	Weight
No Imprint	blue/yellow	2314006-11	0.01 kg

Customised labeling available with a minimum order of 100 pieces.



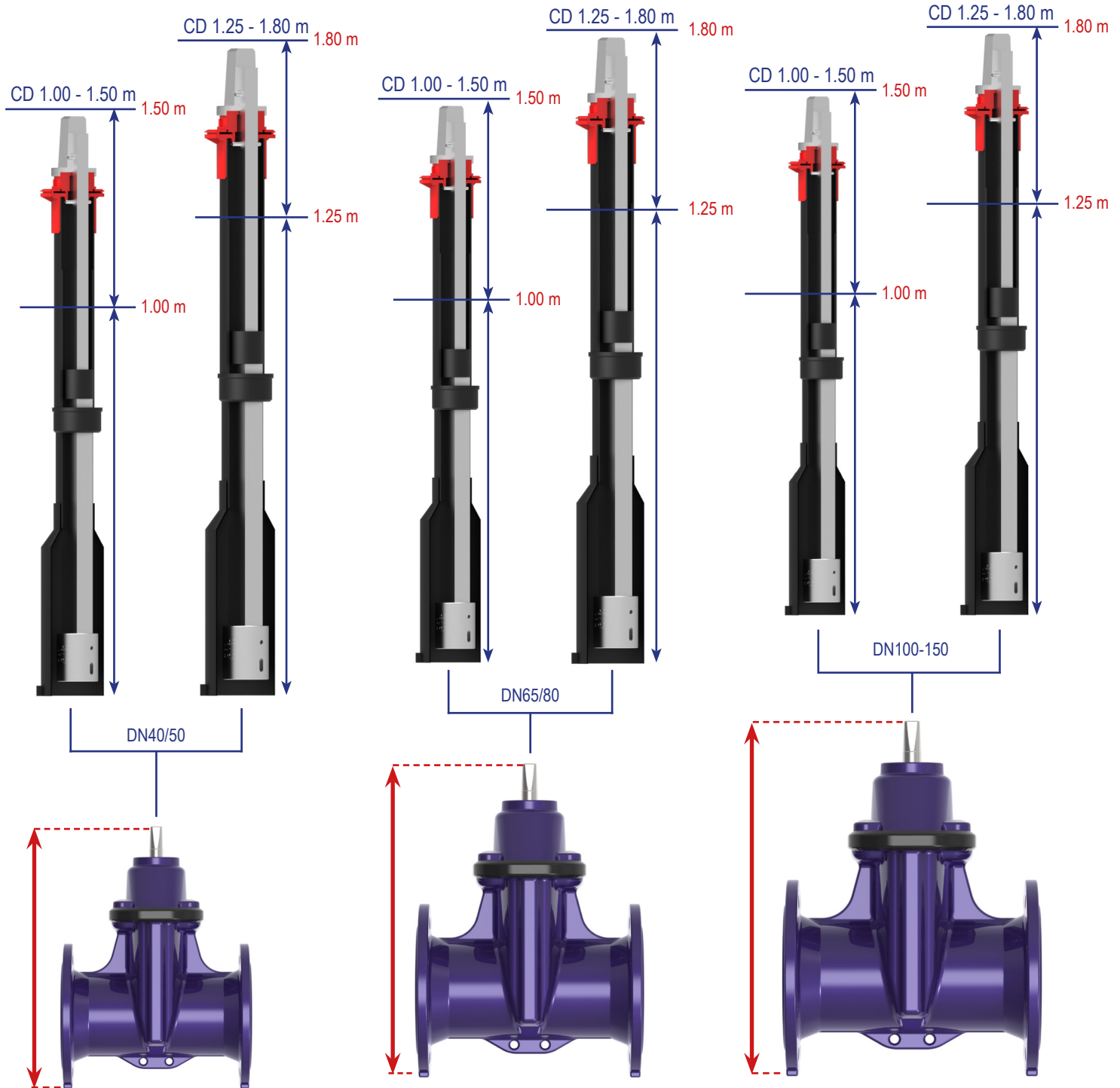
## Cover caps for Spindle Extensions

Type	Color	Imprint	Article No.	Weight
Service valve	red	do not open*	19100	0,06 kg
Gate valve	red	do not open*	19111	0,20 kg
Service valve	black	No imprint	19112	0,06 kg
Gate valve	black	No imprint	19113	0,20 kg
Service valve	blue	No imprint	19114	0,06 kg
Gate valve	blue	No imprint	19115	0,20 kg
Service valve	yellow	No imprint	19116	0,06 kg
Gate valve	yellow	No imprint	19117	0,20 kg

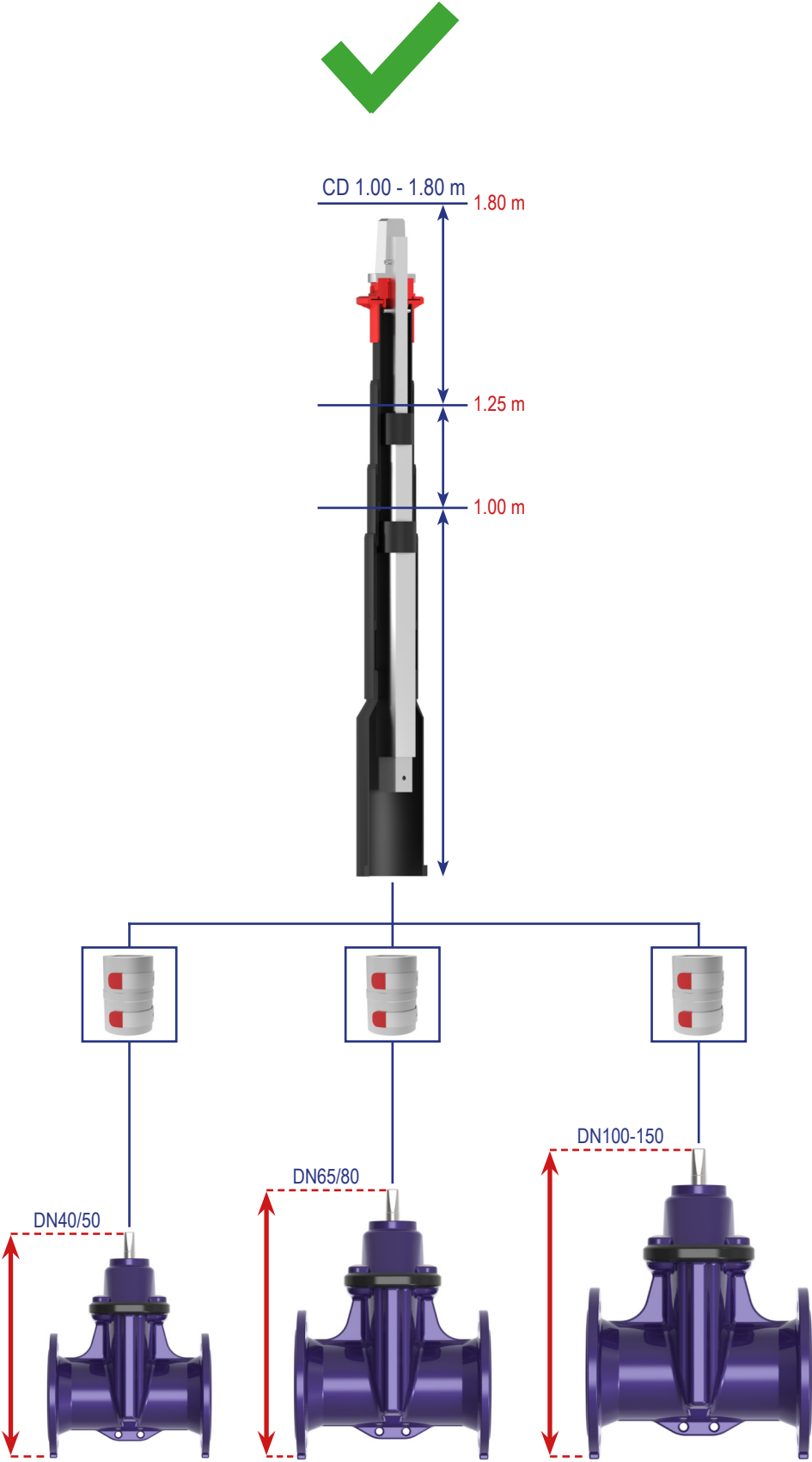


\*German imprint: "nicht öffnen".

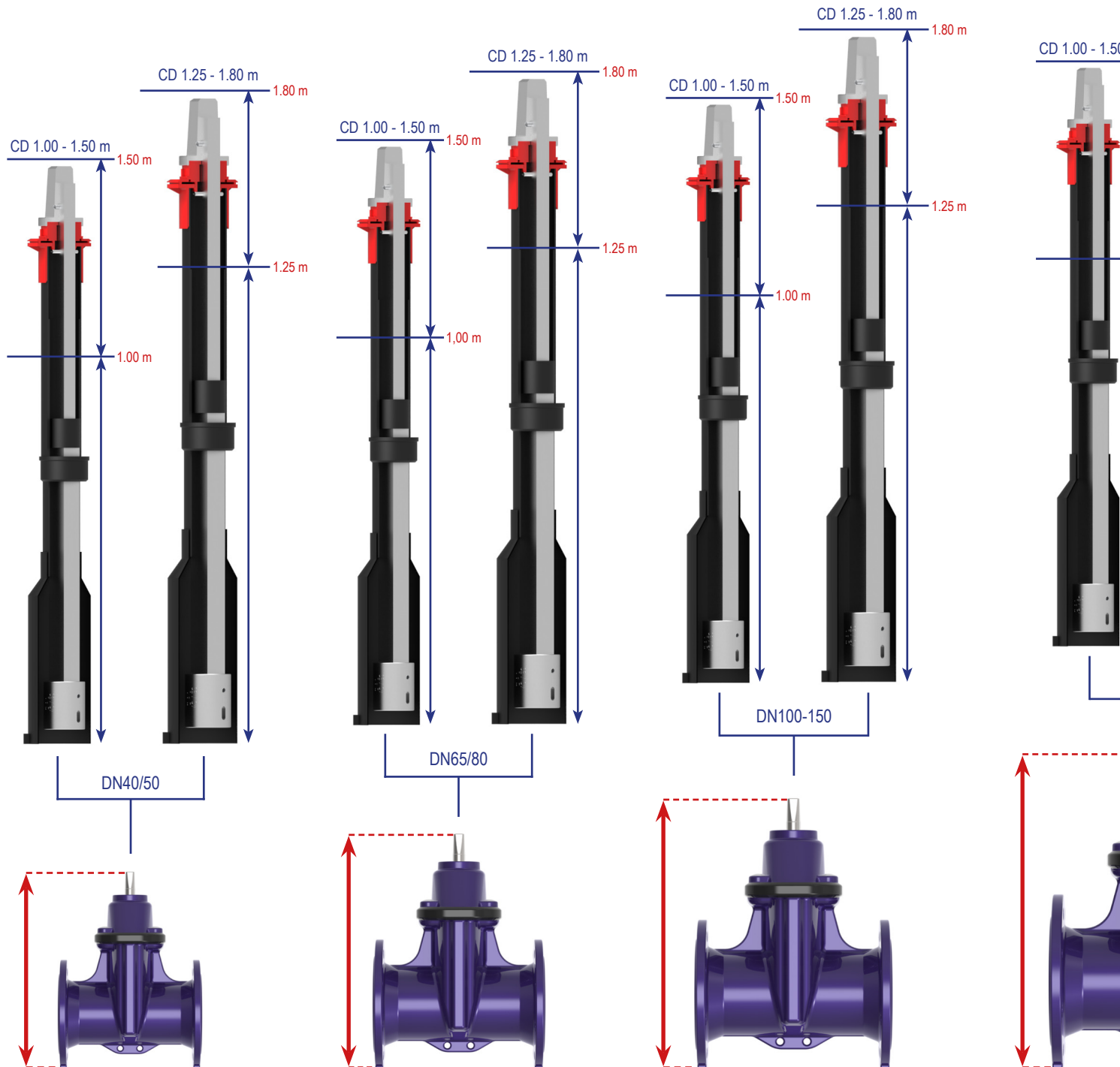
## 2-piece Telescopic Spindle Extension T2



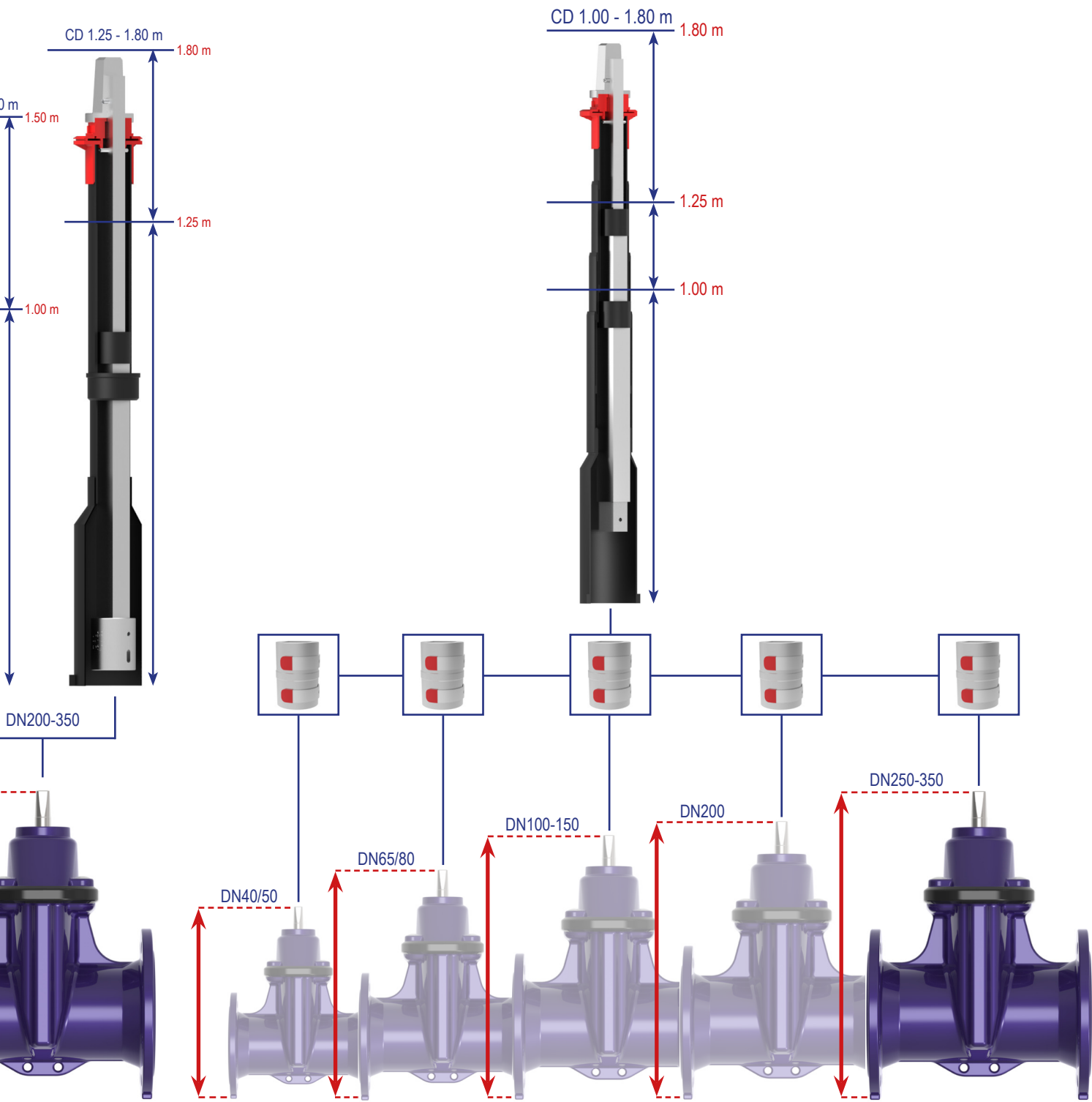
4-piece Telescopic Spindle Extension T4 + GW336 Spindle Extension



## 2-piece Telescopic Spindle Extension T2



4-piece Telescopic Spindle Extension T4X





DALMINEX GmbH  
Helleforthstrasse 87  
D-33758 Schloss Holte-Stukenbrock

Phone: +49 (0)5207 9137 0  
E-Mail: [info@dalminex.de](mailto:info@dalminex.de)  
Website: [www.dalminex.de](http://www.dalminex.de)