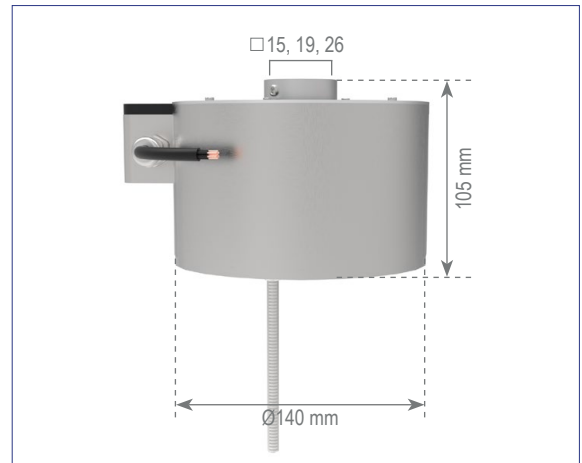
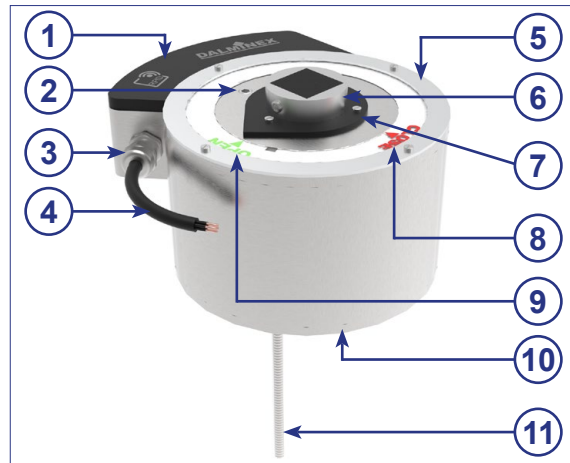


## Electrical position indicator, stainless steel



①



RFID disc  
Material: ASA

②



Set screw M8x10 mm  
Material: 1.4301

③



Strain relief  
Material: Nickel-plated  
brass

④



Control cable  
(waterproof)

⑤



Holding disc  
Material: 1.4301  
*Replaceable spare part*

⑥



Adapter with  
centring-hole  
Material: Cast zinc

⑦



Pointer, black  
Material: S235JR epoxy

⑧



Marking disc  
(CLOSE), transparent  
Material: PMMA  
*Replaceable spare part*

⑨



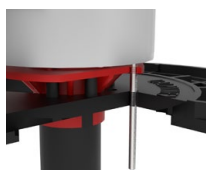
Marking disc  
(OPEN)  
Material: PMMA  
*Replaceable spare part*

⑩



Body  
Material: 1.4301

⑪



Anchoring-pin for  
protective-tube cap or  
DALMINEX supporting-  
plate  
Material: 1.4301

scan me!



## Electrical position indicator, stainless steel

max. turns/stroke	Square insert		Weight
	□ 19 mm	□ 26 mm	
14	13019.14EZW	13026.14EZW	5.9 kg
47	13019.47EZW	13026.47EZW	5.9 kg
140	13019.140EZW	13026.140EZW	5.9 kg
470	13019.470EZW	13026.470EZW	5.9 kg

## DALMINEX installation system

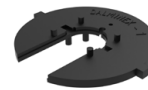
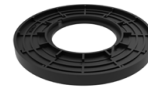
DALMINEX support plate (suitable for position indicators)		
Material	Article No.	Weight
Plastic	12601.01	14.0 kg

DALMINEX fixing disc suitable for DALMINEX support plate		
Material	Article No.	Weight
Plastic	12602.01	1.16 kg

Surface box acc. to DIN 4056 Type 2		
Material	Article No.	Weight
Plastic	4056-2.WK	12.1 kg



Full function and warranty through professional installation of the DALMINEX installation system.



Surface box DIN 4056 Type 2

## Replaceable spare parts

Description	Article No.	Weight
Marking disc (OPEN)	O-22794	0.004 kg
Marking disc (CLOSE)	C-22794	0.004 kg
Holding disc	22794	0.01 kg

Attention! DALMINEX position indicators cannot subsequently be installed on unprepared spindle extensions!

Subject to technical modifications!

## Electrical position indicator, stainless steel



With reed contact switch for line monitoring open and close.

**Stainless steel body for installation on a spindle extension buried or in a chamber**

- ◆ Capsuled and waterproof in accordance with IP68 DIN 40050
- ◆ Screws and connecting parts are in stainless steel
- ◆ Inner area is grease-proofed
- ◆ Electrical parts are sealed with epoxy resin
- ◆ Maintenance-free
- ◆ Working temperature between -40 bis +105 °C
- ◆ Suitable for use with surface box type DIN 4056 size 2

**360° Installation intervals:**

- ◆ 0 – 14 turns/stroke
- ◆ 0 – 47 turns/stroke
- ◆ 0 – 140 turns/stroke
- ◆ 0 – 470 turns/stroke

**Available for use with following square rod dimensions\*:**

- ◆ 18x18 mm
- ◆ 25x25 mm

*\*other options available upon request.*

**Available for use with following keyway dimensions:**

- ◆ Upon request

## Electrical data

Magnetic switch, one changeover contact each for opening and closing

Switch voltage:  $\geq 1$  V bis 20 V

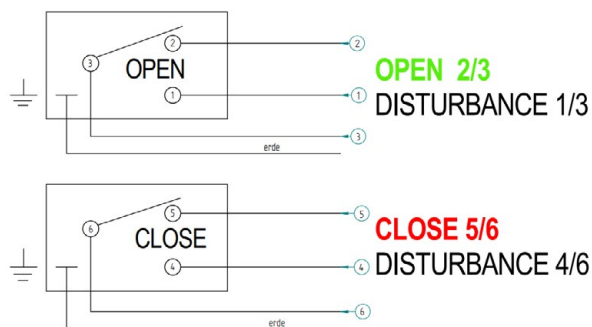
Switch capacity: 100 VA at a max. 500 mA

Protection class: min. IP68, DIN 40050

**Connection:**

Control cable (7x0,5mm<sup>2</sup>)

Length 1,5m (other lengths available upon request)



**Please take note of the following:**

- ◆ The connection and installation of the position indicator must always be carried out by trained personnel.
- ◆ The switch connection cable must hang freely down and shouldn't look up or be bent.
- ◆ The cable-ends have to be water-tight against moisture through cast-resin joints etc.
- ◆ The surface box must be installed such that the water entry can freely flow away.
- ◆ The cable-ends should not lie in water as this would get into the switch housing.
- ◆ The switch should not be used in an aggressive environment as this could affect the seal of the switch housing.
- ◆ The switch housing is protected by up to class IP68.

**In cases where the points above have not been followed, the warranty will be void!**

**Warranty claims are only possible with an original DALMINEX Spindle Extension. For safe installation and reliable functionality, we recommend our DALMINEX installation system.**



### Installation example

