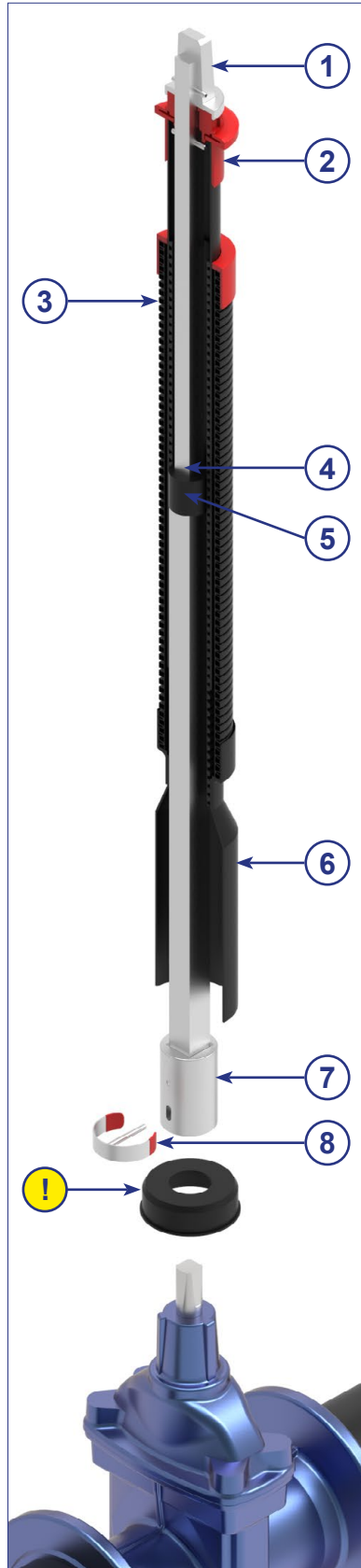


Telescopic Spindle Extension T3



① Square cap SQ27/32



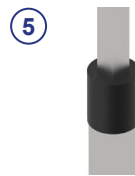
② Centring cap



Tubes



④ Transport lock



⑤ PE-brake



⑥ Round bell



⑦ Coupling



⑧ Clip-pin



⑨ Bell adapter (optional)

scan me!



SPINDLE EXTENSIONS FOR GATE VALVES

Telescopic Spindle Extension T3



Valve Spindle square	CD* Cover depth	Total length (L)** Spindle extension	Article No.	Weight	PU
Gate valve DN40/50 SQ14	1.00 - 1.50 m	0.70 - 1.20 m	14008.T3	4.2 kg	70
	1.25 - 1.80 m	0.93 - 1.61 m	14009.T3	5.3 kg	70
	1.50 - 2.00 m	1.03 - 1.82 m	14010.T3	5.8 kg	70
	1.70 - 2.70 m	1.40 - 2.56 m	14089.T3	7.6 kg	-
	2.30 - 3.90 m	1.92 - 3.60 m	15901.T3	10.0 kg	-
Gate valve DN65/80 SQ17	1.00 - 1.50 m	0.69 - 1.14 m	14011.T3	4.2 kg	70
	1.25 - 1.80 m	0.85 - 1.45 m	14012.T3	5.0 kg	70
	1.50 - 2.00 m	0.95 - 1.65 m	14013.T3	5.4 kg	70
	1.70 - 2.70 m	1.32 - 2.41 m	14090.T3	7.3 kg	-
	2.30 - 3.90 m	1.92 - 3.60 m	15902.T3	10.2 kg	-
Gate valve DN100-150 SQ19	1.00 - 1.20 m	0.54 - 0.84 m	14099.T3	3.3 kg	100
	1.20 - 1.50 m	0.64 - 1.05 m	14014.T3	4.0 kg	70
	1.25 - 1.80 m	0.80 - 1.40 m	14015.T3	4.7 kg	70
	1.50 - 2.00 m	0.95 - 1.64 m	14016.T3	5.3 kg	70
	1.70 - 2.70 m	1.30 - 2.41 m	14091.T3	7.1 kg	-
	2.30 - 3.90 m	1.92 - 3.60 m	15903.T3	10.0 kg	-
Gate valve DN175/200 SQ24	1.10 - 1.30 m	0.52 - 0.79 m	14017.T3	4.5 kg	80
	1.25 - 1.80 m	0.77 - 1.25 m	14018.T3	6.0 kg	70
	1.50 - 2.00 m	0.86 - 1.46 m	14019.T3	6.7 kg	70
	1.70 - 2.70 m	1.21 - 2.19 m	14092.T3	9.5 kg	-
	2.50 - 3.50 m	1.80 - 2.80 m	15904.T3	12.0 kg	-
Gate valve DN250-350 SQ27	1.10 - 1.30 m	0.50 - 0.80 m	14020.T3	4.5 kg	80
	1.25 - 1.80 m	0.71 - 1.15 m	14021.T3	5.7 kg	70
	1.50 - 2.00 m	0.86 - 1.45 m	14023.T3	6.8 kg	70
	1.70 - 2.70 m	1.16 - 2.05 m	14093.T3	8.9 kg	-
	2.50 - 3.50 m	1.96 - 3.16 m	15905.T3	14.6 kg	-
Gate valve DN400/450 SQ32	Telescopic version: max. torque 500 Nm				
	1.40 - 1.60 m	0.56 - 0.84 m	15017.T3	7.2 kg	-
	1.60 - 2.05 m	0.76 - 1.22 m	15018.T3	8.5 kg	-
	2.00 - 2.90 m	1.20 - 2.09 m	15019.T3	11.6 kg	-
Gate valve DN500/600 SQ36	Telescopic version: max. torque 500 Nm				
	1.45 - 1.65 m	0.53 - 0.76 m	15021.T3	8.1 kg	-
	1.65 - 2.10 m	0.75 - 1.16 m	15050.T3	9.5 kg	-
	2.10 - 2.70 m	1.13 - 1.86 m	15022.T3	11.8 kg	-
	2.50 - 3.50 m	1.80 - 2.80 m	15907.T3	16.1 kg	-

PU = Deliveries only possible in packaging units!

*Cover depth measurements depend on the height of the valve used, see p. 11.

**Other lengths available upon request.