

## Telescopic Spindle Extension T3 with square connection



①



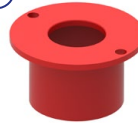
Square cap with screw

②



Position indicator

③



Centring cap

④



Transport lock

⑤



PE-brake

⑥



Tubes

⑦



Round bell

⑧



Split pin

⑨



Clip-pin polygon

scan me!



## Telescopic Spindle Extension T3 with square connection



Suitable for FRIALEN KH					
d	CD* Cover depth	Article No. without position indicator	Article No. with position indicator, yellow	Article No. with position indicator, blue	Weight
32-50 SQ20 with Split pin	0.45 - 0.70 m	FRI14004	FRI14004.14G	FRI14004.14B	1.4 kg
	0.60 - 1.00 m	FRI14005	FRI14005.14G	FRI14005.14B	1.9 kg
	1.00 - 1.50 m	FRI14006	FRI14006.14G	FRI14006.14B	2.7 kg
	1.20 - 2.00 m	FRI14007	FRI14007.14G	FRI14007.14B	3.2 kg
63-225 SQ25 with Split pin	0.60 - 1.00 m	FRI14014	FRI14014.18G	FRI14014.18B	3.0 kg
	1.00 - 1.50 m	FRI14015	FRI14015.18G	FRI14015.18B	4.2 kg
	1.20 - 2.00 m	FRI14016	FRI14016.18G	FRI14016.18B	5.2 kg

Suitable for RMA KH					
d	CD* Cover depth	Article No. without position indicator	Article No. with position indicator, yellow	Article No. with position indicator, blue	Weight
32-63 SQ20 with Spring pin	0.45 - 0.70 m	RMA14004	RMA14004.14G	RMA14004.14B	1.5 kg
	0.60 - 1.00 m	RMA14005	RMA14005.14G	RMA14005.14B	1.9 kg
	1.00 - 1.50 m	RMA14006	RMA14006.14G	RMA14006.14B	2.8 kg
	1.20 - 2.00 m	RMA14007	RMA14007.14G	RMA14007.14B	3.4 kg
90-180 SQ25 with Spring pin	0.60 - 1.00 m	RMA14008	RMA14008.18G	RMA14008.18B	3.1 kg
	1.00 - 1.50 m	RMA14009	RMA14009.18G	RMA14009.18B	4.4 kg
	1.20 - 2.00 m	RMA14010	RMA14010.18G	RMA14010.18B	4.7 kg

Suitable for AGRU/FRANK (bell suitable for AGRU Adapter)					
d	CD* Cover depth	Article No. without position indicator	Article No. with position indicator, yellow	Article No. with position indicator, blue	Weight
32-63 SQ20 with Split pin	0.60 - 0.80 m	10088.GWC	10088.GWC.14G	10088.GWC.14B	1.6 kg
	0.80 - 1.20 m	14004.GWC	14004.GWC.14G	14004.GWC.14B	1.8 kg
	1.00 - 1.50 m	14005.GWC	14005.GWC.14G	14005.GWC.14B	2.3 kg
	1.20 - 1.80 m	14006.GWC	14006.GWC.14G	14006.GWC.14B	2.9 kg
	1.50 - 2.20 m	14007.GWC	14007.GWC.14G	14007.GWC.14B	3.2 kg
90-225 SQ25 with Split pin	0.60 - 0.80 m	14008.GWC	14008.GWC.18G	14008.GWC.18B	2.6 kg
	0.80 - 1.20 m	13999.GWC	13999.GWC.18G	13999.GWC.18B	3.5 kg
	1.00 - 1.50 m	14014.GWC	14014.GWC.18G	14014.GWC.18B	4.0 kg
	1.20 - 1.80 m	14015.GWC	14015.GWC.18G	14015.GWC.18B	4.9 kg
	1.50 - 2.20 m	14016.GWC	14016.GWC.18G	14016.GWC.18B	4.8 kg

Suitable for AVK Magnus (Connection as per GW336)					
d	CD* Cover depth	Article No. without position indicator	Article No. with position indicator, yellow	Article No. with position indicator, blue	Weight
25-63 SQ20 without Split pin	0.80 - 1.20 m	AVK14005	AVK14005.14G	AVK14005.14B	1.7 kg
	1.10 - 1.60 m	AVK14006	AVK14006.14G	AVK14006.14B	2.4 kg
	1.30 - 2.20 m	AVK14007	AVK14007.14G	AVK14007.14B	3.4 kg
90-180 SQ25 without Split pin	0.80 - 1.20 m	AVK13999	AVK13999.18G	AVK13999.18B	3.4 kg
	1.10 - 1.60 m	AVK14015	AVK14015.18G	AVK14015.18B	4.0 kg
	1.30 - 2.20 m	AVK14016	AVK14016.18G	AVK14016.18B	5.3 kg

Connection pins			
Description	Size	Article No.	Weight
Clip-pin polygon	Ø4x62 mm / A2	100326	0.01 kg
Split pin	Ø4x63 mm / A2	100309	0.01 kg
Spring pin	Ø2,5x75 mm	100301	0.01 kg

\*Cover depth measurements depend on the height of the valve used, see p. 11.  
Other lengths available upon request.

Subject to technical modifications!