

SPINDLE EXTENSIONS FOR BALL VALVES

Telescopic Spindle Extension T3 with Polygon

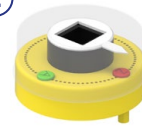


①



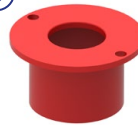
Square cap

②



Position indicator

③



Centring cap

④



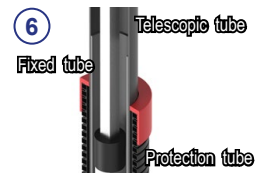
Transport lock

⑤



PE-brake

⑥



Tubes

⑦



Polygon steel coupling

⑧



Round bell

scan me!



SPINDLE EXTENSIONS FOR BALL VALVES

Telescopic Spindle Extension T3 with Polygon



Suitable for FRIALEN					
d	CD* Cover depth	Article No. without position indicator	Article No. with position indicator, yellow	Article No. with position indicator, blue	Weight
32-50 Polygon	0.45 - 0.70 m	FRI14004.00	FRI14004.00.14G	FRI14004.00.14B	2.1 kg
	0.60 - 1.00 m	FRI14005.00	FRI14005.00.14G	FRI14005.00.14B	2.4 kg
	1.00 - 1.50 m	FRI14006.00	FRI14006.00.14G	FRI14006.00.14B	3.7 kg
	1.20 - 2.00 m	FRI14007.00	FRI14007.00.14G	FRI14007.00.14B	3.7 kg
63-225 Polygon	0.60 - 1.00 m	FRI14014.00	FRI14014.00.18G	FRI14014.00.18B	3.0 kg
	1.00 - 1.50 m	FRI14015.00	FRI14015.00.18G	FRI14015.00.18B	4.5 kg
	1.20 - 2.00 m	FRI14016.00	FRI14016.00.18G	FRI14016.00.18B	5.1 kg
Suitable for RMA					
d	CD* Cover depth	Article No. without position indicator	Article No. with position indicator, yellow	Article No. with position indicator, blue	Weight
32-63 Polygon	0.45 - 0.70 m	RMA14004.00	RMA14004.00.14G	RMA14004.00.14B	1.6 kg
	0.60 - 1.00 m	RMA14005.00	RMA14005.00.14G	RMA14005.00.14B	2.0 kg
	1.00 - 1.50 m	RMA14006.00	RMA14006.00.14G	RMA14006.00.14B	2.8 kg
	1.20 - 2.00 m	RMA14007.00	RMA14007.00.14G	RMA14007.00.14B	3.5 kg
90-180 Polygon	0.60 - 1.00 m	RMA14008.00	RMA14008.00.18G	RMA14008.00.18B	3.1 kg
	1.00 - 1.50 m	RMA14009.00	RMA14009.00.18G	RMA14009.00.18B	4.6 kg
	1.20 - 2.00 m	RMA14010.00	RMA14010.00.18G	RMA14010.00.18B	4.7 kg
Suitable for AGRU/FRANK (bell suitable for AGRU Adapter)					
d	CD* Cover depth	Article No. without position indicator	Article No. with position indicator, yellow	Article No. with position indicator, blue	Weight
32-63 Square	0.60 - 0.80 m	10088.GWC.00	10088.GWC.00.14G	10088.GWC.00.14B	1.9 kg
	0.80 - 1.20 m	14004.GWC.00	14004.GWC.00.14G	14004.GWC.00.14B	3.2 kg
	1.00 - 1.50 m	14005.GWC.00	14005.GWC.00.14G	14005.GWC.00.14B	2.5 kg
	1.20 - 1.80 m	14006.GWC.00	14006.GWC.00.14G	14006.GWC.00.14B	3.0 kg
	1.50 - 2.20 m	14007.GWC.00	14007.GWC.00.14G	14007.GWC.00.14B	3.2 kg
90-225 Square	0.60 - 0.80 m	14008.GWC.00	14008.GWC.00.18G	14008.GWC.00.18B	2.7 kg
	0.80 - 1.20 m	13999.GWC.00	13999.GWC.00.18G	13999.GWC.00.18B	3.7 kg
	1.00 - 1.50 m	14014.GWC.00	14014.GWC.00.18G	14014.GWC.00.18B	3.8 kg
	1.20 - 1.80 m	14015.GWC.00	14015.GWC.00.18G	14015.GWC.00.18B	4.5 kg
	1.50 - 2.20 m	14016.GWC.00	14016.GWC.00.18G	14016.GWC.00.18B	4.9 kg
Suitable for AVK Magnus (Bell connection as per GW336)					
d	CD* Cover depth	Article No. without position indicator	Article No. with position indicator, yellow	Article No. with position indicator, blue	Weight
63-180 Polygon	0.80 - 1.20 m	AVK13999.00	AVK13999.00.18G	AVK13999.00.18B	4.0 kg
	1.10 - 1.60 m	AVK14015.00	AVK14015.00.18G	AVK14015.00.18B	4.6 kg
	1.30 - 2.20 m	AVK14016.00	AVK14016.00.18G	AVK14016.00.18B	5.3 kg

*Cover depth measurements depend on the height of the valve used, see p. 11.
Other lengths available upon request.