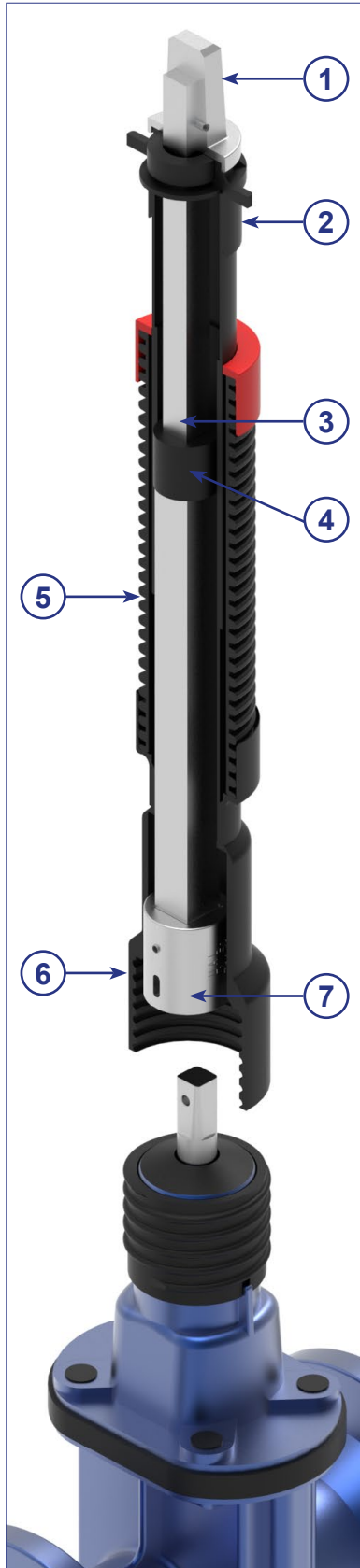


Telescopic Spindle Extension T3 for Gate valves with screw bell

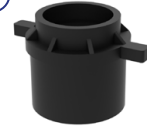


①



Square cap

②



Centring cap

③



Transport lock

④



PE-brake

⑤



Tubes

⑥



PE-Screw bell

⑦



Coupling

scan me!



Telescopic Spindle Extension T3 for Gate valves with screw bell



Valve Spindle square	CD* Cover depth	Article No.	Weight
Gate valve DN40/50 SQ14	0.75 - 1.00 m	14076	3.2 kg
	1.00 - 1.45 m	14077	4.4 kg
	1.30 - 2.05 m	14078	5.9 kg
	1.70 - 2.50 m	20325	7.9 kg
Gate valve DN65/80 SQ17	0.75 - 1.00 m	14079	3.3 kg
	1.00 - 1.40 m	14080	4.4 kg
	1.30 - 2.00 m	14081	5.6 kg
	1.70 - 2.50 m	20326	7.5 kg
Gate valve DN100-150 SQ19	0.75 - 1.00 m	14082	2.9 kg
	1.00 - 1.30 m	14083	4.1 kg
	1.30 - 1.90 m	14084	5.4 kg
	1.70 - 2.50 m	20327	7.4 kg
Gate valve DN200 SQ24	1.10 - 1.35 m	14085	4.5 kg
	1.30 - 1.85 m	14086	6.0 kg
	1.70 - 2.50 m	14112	9.5 kg
Gate valve DN250/300 SQ27 with Round bell	1.20 - 1.50 m	14087	5.0 kg
	1.50 - 1.80 m	14088	6.8 kg
	2.00 - 2.50 m	20328	9.3 kg

*Other lengths available upon request.

PE-screw bell with suitable connection to valve.
The screw connection is without connecting pin.

Special application



Mount the screw bell onto the gate valve and the coupling will be connected to the spindle. The screw connection is without connecting pin.



Our wing cap fits perfectly into the DAlMINEX installation system. (see p. 87).

