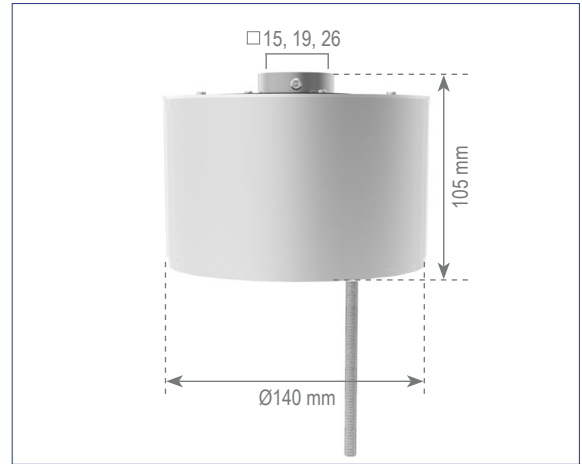
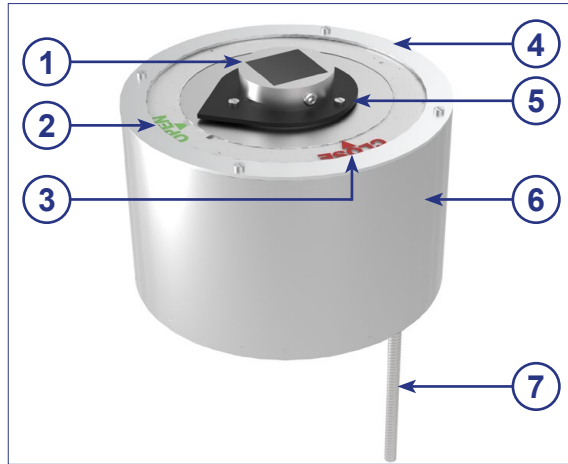


Mechanical position indicator, stainless steel



①



Adapter with centring-hole
Material: Cast zinc

②



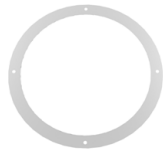
Marking disc (OPEN)
Material: PMMA
Replaceable spare part

③



Marking disc (CLOSE), transparent
Material: PMMA
Replaceable spare part

④



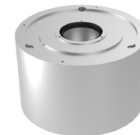
Holding disc
Material: 1.4301
Replaceable spare part

⑤



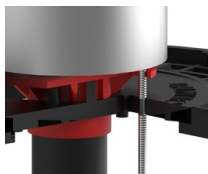
Pointer, black
Material: S235JR epoxy

⑥



Body
Material: 1.4301

⑦



Anchoring-pin for protective-tube cap or DALMINEX supporting-plate
Material: 1.4301

scan me!



Mechanical position indicator, stainless steel

| max. turns/stroke | Square insert | | Weight |
|-------------------|---------------|--------------|--------|
| | □ 19 mm | □ 26 mm | |
| 14 | 13019.14RZW | 13026.14RZW | 5.0 kg |
| 47 | 13019.47RZW | 13026.47RZW | 5.0 kg |
| 140 | 13019.140RZW | 13026.140RZW | 5.0 kg |
| 470 | 13019.470RZW | 13026.470RZW | 5.0 kg |

DALMINEX installation system

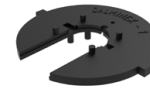
DALMINEX support plate (suitable for position indicators)

| Material | Article No. | Weight |
|----------|-------------|---------|
| Plastic | 12601.01 | 14.0 kg |



DALMINEX fixing disc suitable for DALMINEX support plate

| Material | Article No. | Weight |
|----------|-------------|---------|
| Plastic | 12602.01 | 1.16 kg |



Surface box acc. to DIN 4056 Type 2

| Material | Article No. | Weight |
|----------|-------------|---------|
| Plastic | 4056-2.WK | 12.1 kg |



Full function and warranty through professional installation of the DALMINEX installation system.



Surface box DIN 4056 Type 2

Replaceable spare parts

| Description | Article No. | Weight |
|----------------------|-------------|----------|
| Marking disc (OPEN) | O-22794 | 0.004 kg |
| Marking disc (CLOSE) | C-22794 | 0.004 kg |
| Holding disc | 22794 | 0.01 kg |

Attention! DALMINEX position indicators cannot subsequently be installed on unprepared spindle extensions!

Subject to technical modifications!