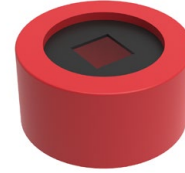


# ACCESSORIES



## Covering caps

Dimensions	Color	Article No.	Weight
Ø50xØ36mm	blue	12318.02	0.01 kg
Ø50xØ36mm	red	12318.03	0.01 kg
Ø54xØ36mm	blue	12321.02	0.01 kg
Ø54xØ36mm	red	12321.03	0.01 kg



Sealing disc included. Please state rod dimensions when ordering

## Centring caps

Dimensions for protection tube	Color	Article No.	Weight
Ø50mm	red	13789.03	0.04 kg
Ø54mm	blue	13790.14	0.04 kg
Ø54mm	yellow	13790.02	0.04 kg
Ø54mm	red	13790.13	0.04 kg
Ø54mm	black	13790.10	0.04 kg



Sealing disc included. Please state rod dimensions when ordering

## Bell adapters / Sealing inserts

Suitable for valve	Description	Material	Article No.	Weight
EWE, VAG	Type I	PE	12511.01	0.04 kg
AVK-Mittelmann SVK VA	Insert for Type I	PE	12511.02	0.01 kg
Z-Schelle Keulahütte Lüneburg	Type II	PE	12511.03	0.03 kg
ERHARD (semicircle)	Type III	PE	12511.04	0.04 kg
EWE	-	PE	12511.00	0.01 kg
ASP, VOIGT, Friatec DAV d63 AVK Service valve	Type IV	PE	12511.05	0.05 kg
Hawle (thread)	Type VI	PE	12511.07	0.05 kg
Belgicast internal	Type III (Ø41 mm)	PE	12511.41	0.09 kg
FUCOLI	Ø81x46 mm	PE	12511.08	0.01 kg
Universal Service valve	Ø81x36 mm	EPDM	12511.09	0.01 kg
Universal DN40-150	Ø81x36 mm	EPDM	12514.11K	0.01 kg
Universal DN200-350	Ø100x36 mm	EPDM	12514.14	0.01 kg
AWP	Screw thread DVGW GW336	PE	12514.15	0.01 kg



Subject to technical modifications!