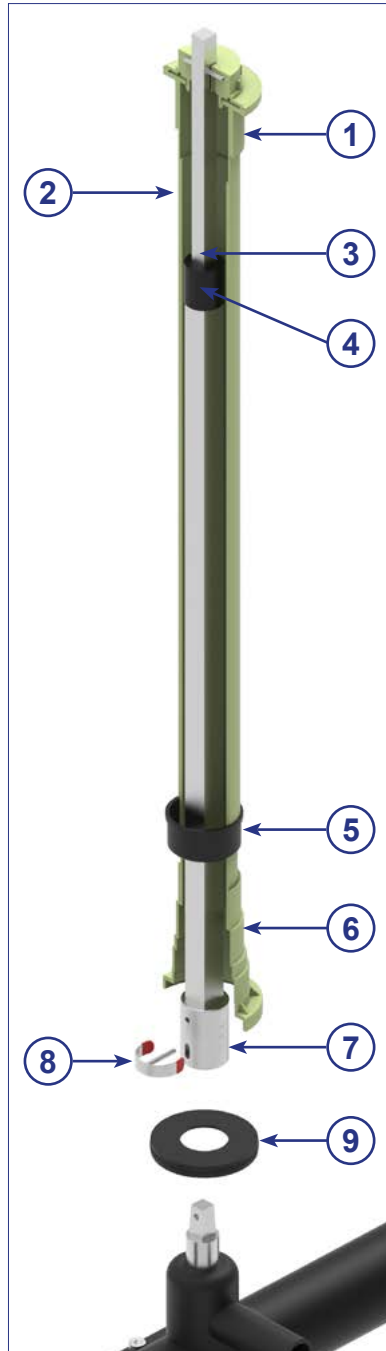


SPINDLE EXTENSIONS FOR SERVICE VALVES

Telescopic spindle extension T2-GREEN



Valve Spindle square	CD* Cover depth	Total length (L)** Spindle extension	Article No.	Weight
Service valve SQ12	0.55 - 0.70 m	0.28 - 0.41 m	14095.01.BIO	1.1 kg
	0.70 - 1.00 m	0.43 - 0.69 m	10088.01.BIO	1.5 kg
	0.85 - 1.30 m	0.58 - 0.98 m	14004.01.BIO	2.0 kg
	1.00 - 1.50 m	0.78 - 1.31 m	14005.01.BIO	2.4 kg
	1.25 - 1.80 m	0.89 - 1.59 m	14006.01.BIO	2.9 kg
	1.50 - 2.00 m	0.99 - 1.76 m	14007.01.BIO	3.1 kg
	1.70 - 2.70 m	1.38 - 2.34 m	14094.01.BIO	4.3 kg

*Cover depth measurements depend on the height of the valve used, see p. 11.

**Other lengths available upon request.

Subject to technical modifications!



Telescopic spindle extension T2-GREEN



Conventional polyethylene is made from fossil raw materials such as crude oil or natural gas. However, ethanol from sugar cane is used to produce the bio-based PE-HD. Sugarcane is a fast-growing, sturdy plant that captures CO₂ from the atmosphere during its annual growth cycle. This not only saves fossil raw materials that are becoming increasingly scarce, but also helps to reduce CO₂ emissions. Depending on the Green PE type, the percentage of renewable carbon is between 80% and 100%, according to the ASTM D6866 standard.

*Cover depth measurements depend on the height of the valve used, see p. 11.

**Other lengths available upon request.

Subject to technical modifications!

