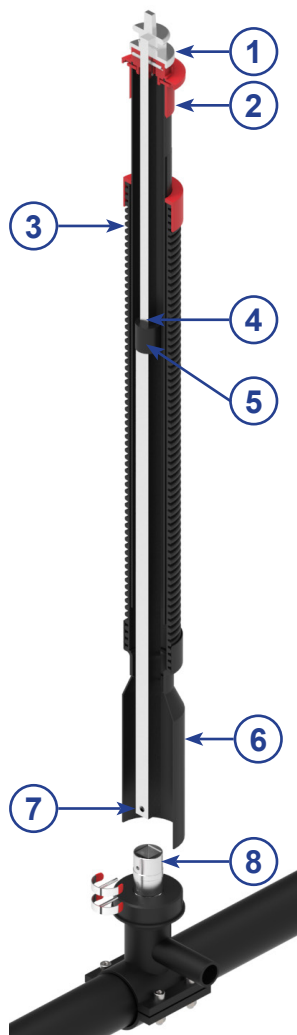
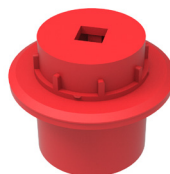


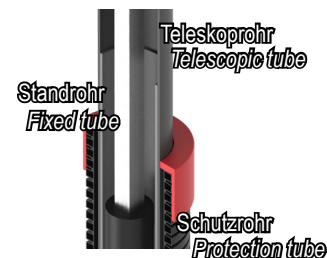
Teleskop-EBG T3 gem. DVGW GW336 für Hausanschlussarmaturen | Telescopic Spindle Extension T3 as per DVGW GW336 for Service Valves



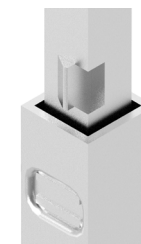
1 Vierkantschoner
gem. DVGW GW336
*Square cap
as per DVGW GW336*



2 Zentrierkappe
Centring cap



3 Rohre
Tubes



4 Auszugssicherung 150N
gem. DVGW GW336
*Transport lock 150N
as per DVGW GW336*



5 PLUS-Sicherung
PE-brake



6 Rundglocke
gem. DVGW GW336
*Round bell
as per DVGW GW336*



7 Vierkantstahl mit Bohrung
gem. DVGW GW336
*Square bar with drilling
as per DVGW GW336*

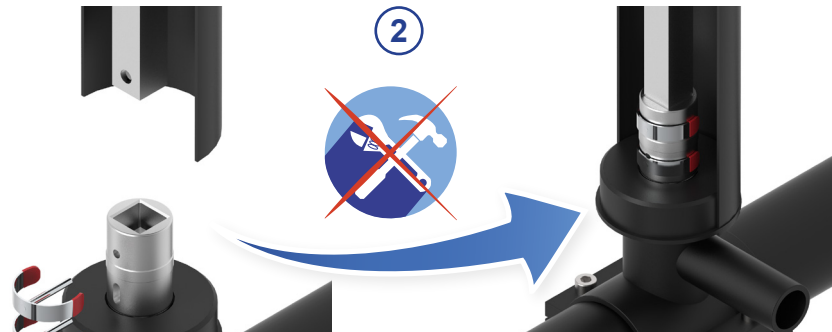


8 Armatur
gem. DVGW GW336
*Valve
as per DVGW GW336*

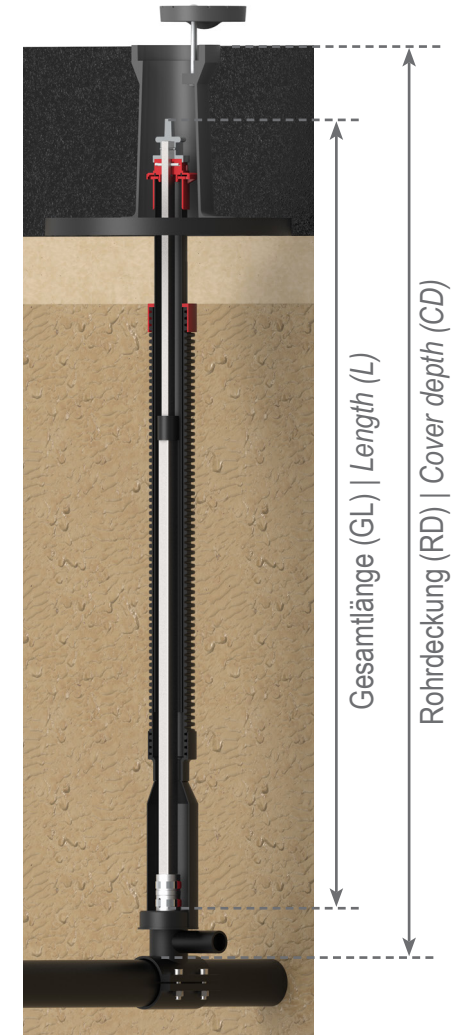
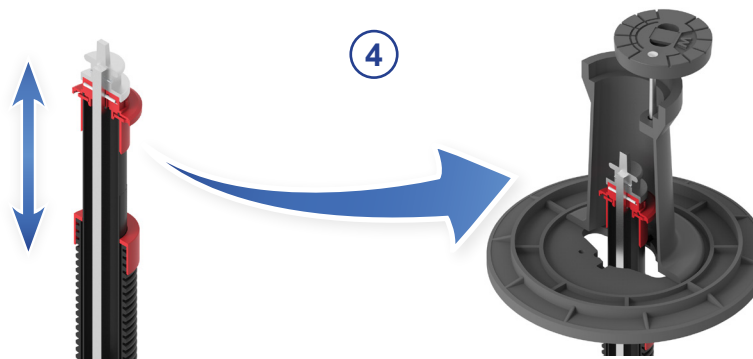
Teleskop-EBG T3 gem. DVGW GW336 für Hausanschlussarmaturen | Telescopic Spindle Extension T3 as per DVGW GW336 for Service Valves



①



③



Technische Änderungen vorbehalten! | Subject to technical modifications!