

Electrical position indicator, stainless steel

①

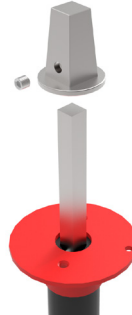


- As delivered
(Pointer on OPEN)



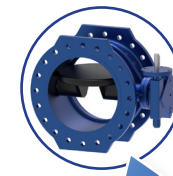
Screw in the
anchoring-pin

②



- Remove the square cap from
the extension

③



- Put the position indicator
on the opened valve, fix the
anchoring-pin on the centring cap
- Tighten the set screw



④



- Put the square cap back on and
tighten the set screw

⑤



- Put on the
DALMINEX support plate

⑥

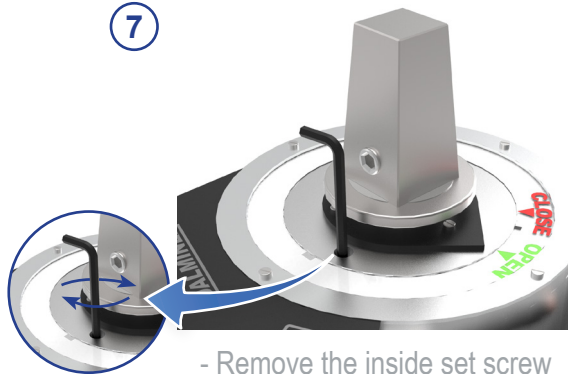


- Extend the spindle extension,
insert the DALMINEX fixing disc
and make sure that the centring cap and the
position indicator is centered

Subject to technical modifications!

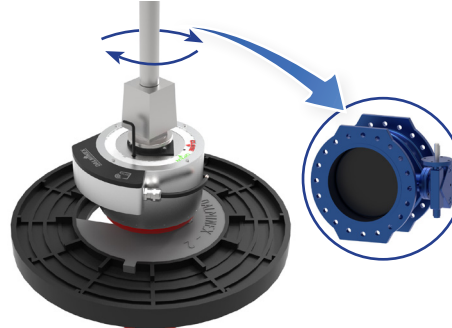
Electrical position indicator, stainless steel

7



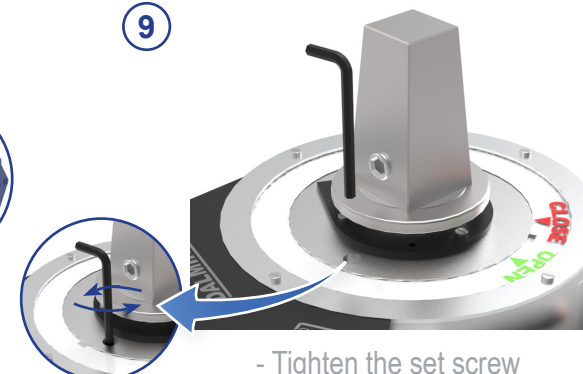
- Remove the inside set screw
with an allen key

8



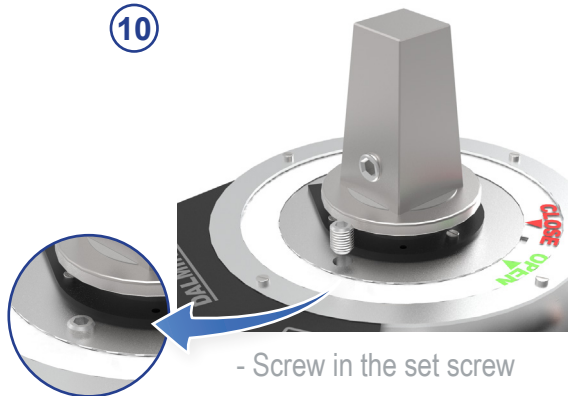
- Close the valve completely
(Don't remove the allen key!)

9



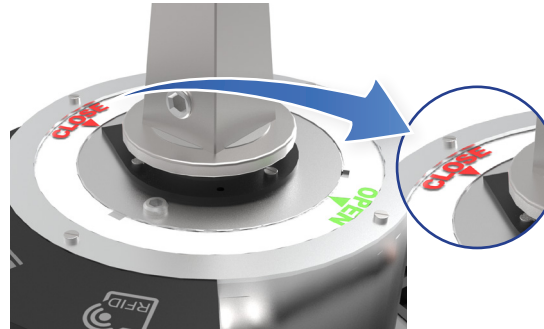
- Tighten the set screw
(Remove the allen key)

10



- Screw in the set screw

11



- Align the marking disc
(CLOSE) according to the arrow

12



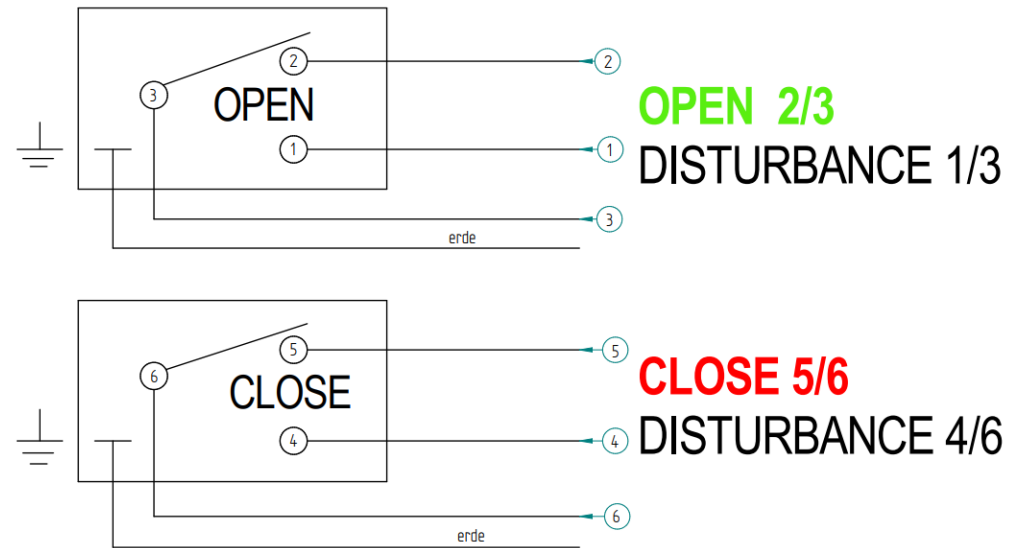
- Tighten the marking disc with
the holding disc
(4 screws)

Electrical data

Magnetic switch, one changeover contact each for opening and closing
 Switch voltage: Ξ 1 V bis 20 V
 Switch capacity: 100 VA at a max. 500 mA
 Protection class: min. IP68, DIN 40050

Connection:

Control cable (7x0,5mm²)
 Length 1,5m (other lengths available upon request)



Please take note of the following:

- ◆ The connection and installation of the position indicator must always be carried out by trained personnel.
- ◆ The switch connection cable must hang freely down and shouldn't look up or be bent.
- ◆ The cable-ends have to be water-tight against moisture through cast-resin joints etc.
- ◆ The surface box must be installed such that the water entry can freely flow away.
- ◆ The cable-ends should not lie in water as this would get into the switch housing.
- ◆ The switch should not be used in an aggressive environment as this could affect the seal of the switch housing.
- ◆ The switch housing is protected by up to class IP68.

In cases where the points above have not been followed, the warranty will be void!

Warranty claims are only possible with an original DALMINEX Spindle Extension. For safe installation and reliable functionality, we recommend our DALMINEX installation system.