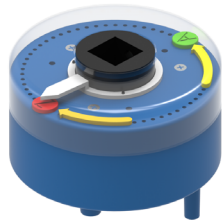


Mechanical position indicator, plastic

①



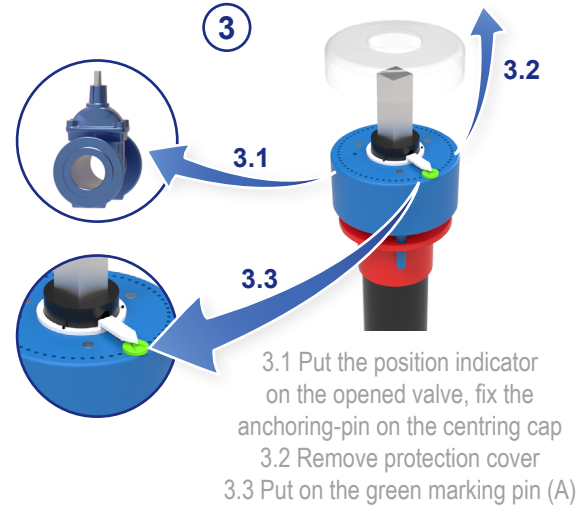
- As delivered
WARNING! The yellow direction arrows and marking pins (red) & (green) are delivered loose in a bag

②



- Remove the square cap from the extension

③



3.1 Put the position indicator on the opened valve, fix the anchoring-pin on the centring cap
3.2 Remove protection cover
3.3 Put on the green marking pin (A)

④



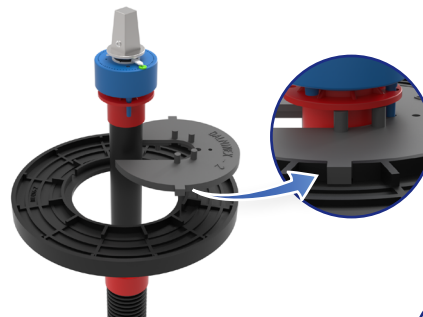
- Put the square cap back on and tighten the set screw

⑤



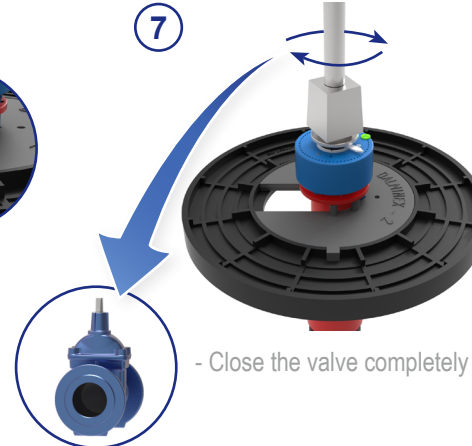
- Put on the DALMINEX support plate

⑥



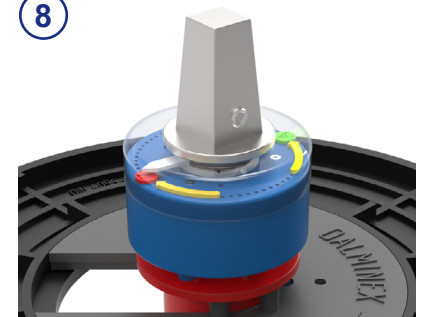
- Extend the spindle extension, insert the DALMINEX fixing disc and make sure that the centring cap and the position indicator is centered

⑦



- Close the valve completely

⑧



- Put on the red marking pin (Z) and the yellow direction arrows
- Remove the square cap
- Put on the protection cover and square cap back on and tighten the set screw