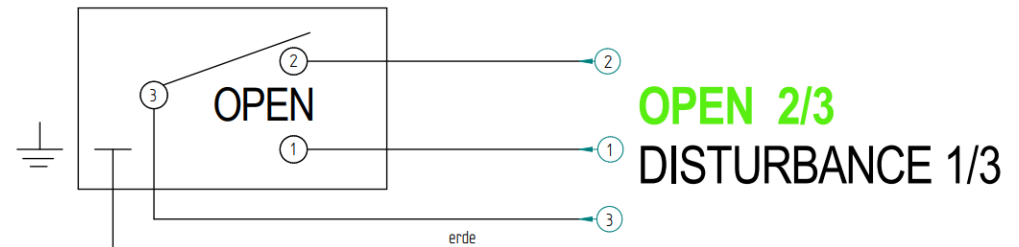


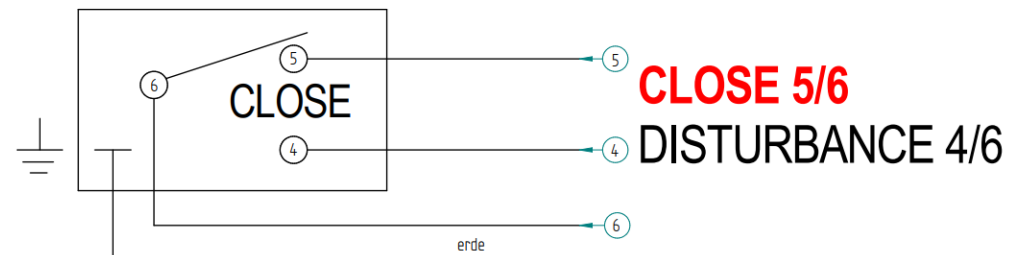
Electrical data

Magnetic switch, one changeover contact each for opening and closing
 Switch voltage: Ξ 1 V bis 20 V
 Switch capacity: 100 VA at a max. 500 mA
 Protection class: min. IP68, DIN 40050



Connection:

Control cable (7x0,5mm²)
 Length 1,5m (other lengths available upon request)



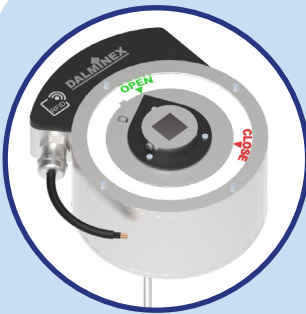
Please take note of the following:

- ◆ The connection and installation of the position indicator must always be carried out by trained personnel.
- ◆ The switch connection cable must hang freely down and shouldn't look up or be bent.
- ◆ The cable-ends have to be water-tight against moisture through cast-resin joints etc.
- ◆ The surface box must be installed such that the water entry can freely flow away.
- ◆ The cable-ends should not lie in water as this would get into the switch housing.
- ◆ The switch should not be used in an aggressive environment as this could affect the seal of the switch housing.
- ◆ The switch housing is protected by up to class IP68.

In cases where the points above have not been followed, the warranty will be void!

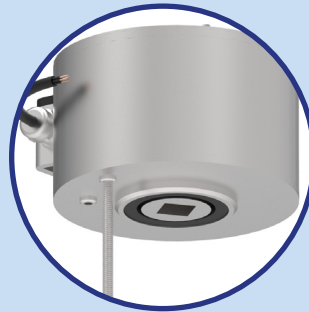
Warranty claims are only possible with an original DALMINEX Spindle Extension. For safe installation and reliable functionality, we recommend our DALMINEX installation system.

Electric position indicator, stainless Steel

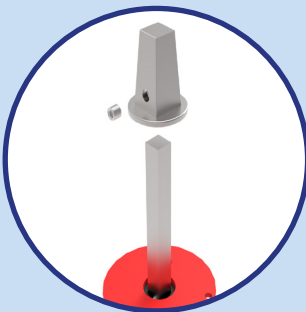


Delivery Condition:
Pointer set to Open.

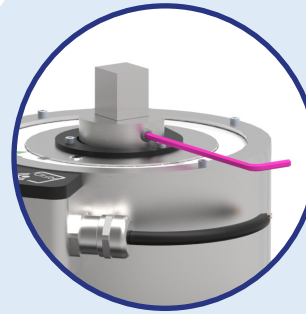
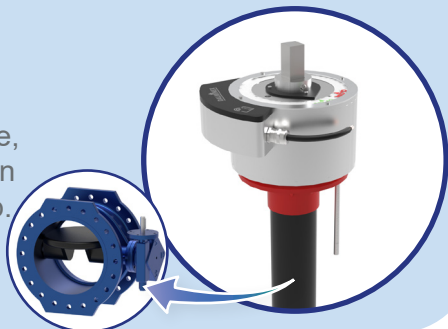
Screw in the
anchoring-pin.



Remove the square cap
from the extension.

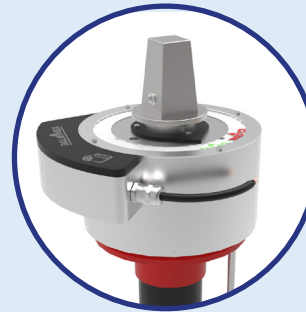


Put the position
indicator
on the opened valve,
fix the anchoring-pin
on the centring cap.



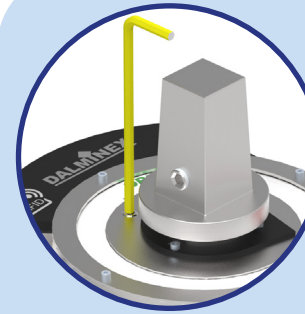
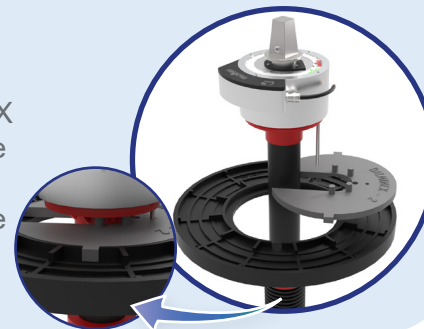
Tighten the set screw.
(Allen key M3 (pink))

Put the square cap back
on and tighten the set
screw.



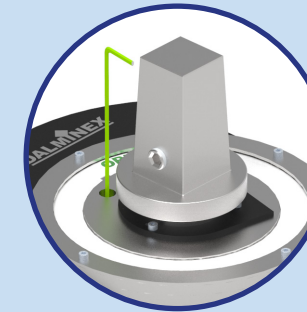
Put on the
DALMINEX Support
Plate.

Extend the spindle
extension,
insert the DALMINEX
fixing disc and make
sure that the
centring cap and the
position.

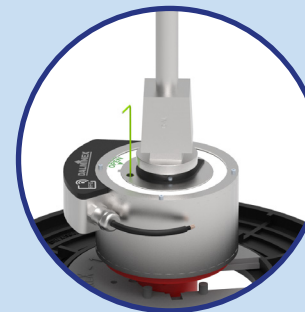


Loosen and remove the
marked set screw.
(Allen key M4 (yellow))

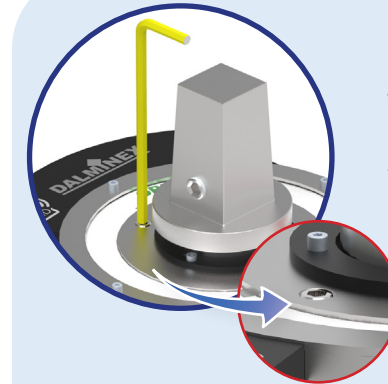
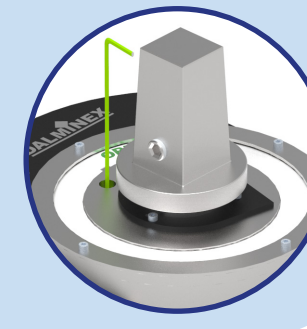
Loosen the internal set
screw inside the housing
with an Allen key. **Do not
remove the key!**
(Allen key M2.5 (green))



Keep the key in place
and close the valve.
(Allen key M2.5 (green))

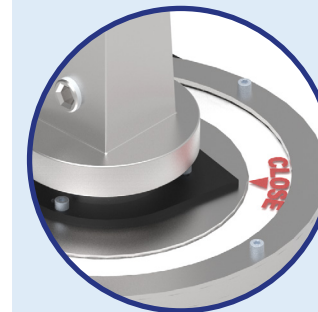
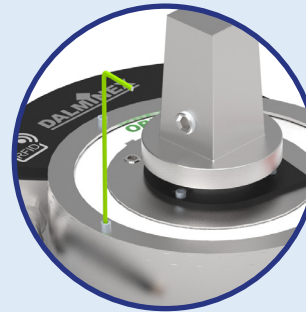


Tighten the internal set
screw inside the housing
with the Allen key. **Re-
move the key.**
(Allen key M2.5 (green))



Screw in and tighten the
removed set screw.
**ATTENTION: Flush with
the housing!**
(Allen key M4 (yellow))

Loosen the hex socket
screws.
(Allen key M2.5 (green))



Align the CLOSE mar-
king disc according to
the arrow.

Tighten the hex socket
screws.
(Allen key M2.5 (green))

