

CATALOGUE

10/2021

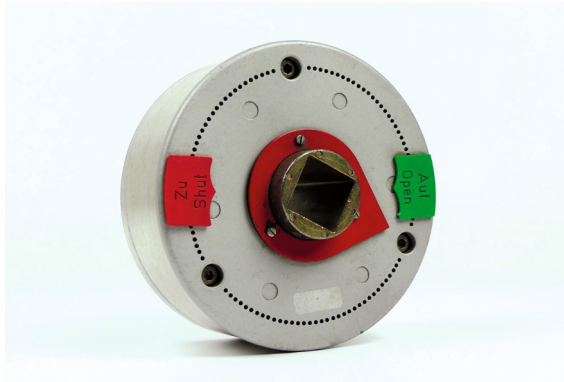
POSITION INDICATORS

Mechanical and electrical position indicators
for spindle extensions



DALMINEX





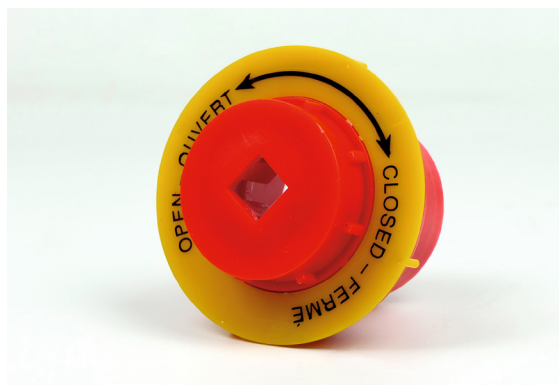
Development of the first mechanical position indicator with an aluminium housing, suitable for butterfly valves.



Mechanical position indicator made of plastic for gate valves.



Plastic direction indicator for DALMINEX spindle extension Tele2000.

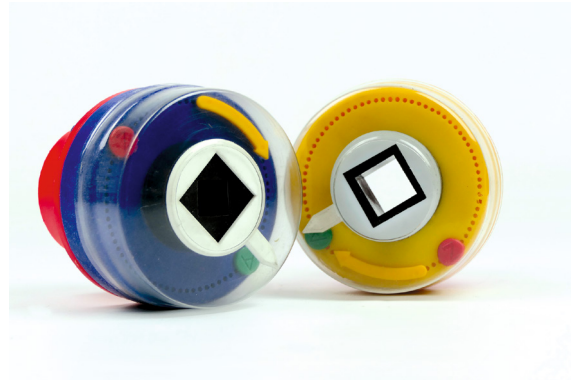


Electrical position indicator with optic technology





1. Electrical position indicator with magnetic switch technology.



2. Position indicator made of plastic.



Position indicator with fibre
optology and digital display.



Electrical position indicator with reed contacts for calibration at the place of
installation, as well as unique identification via RFID chip.



POSITION
FOR



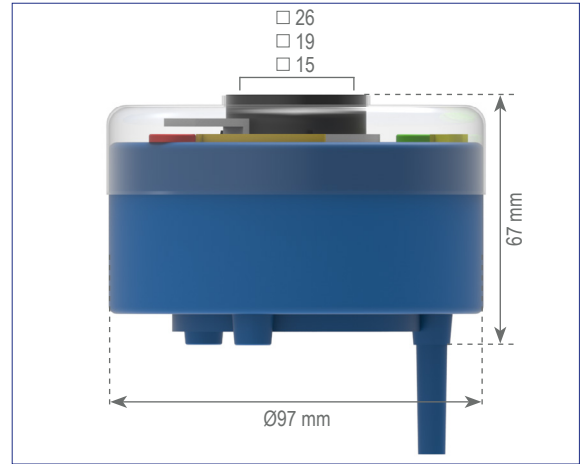
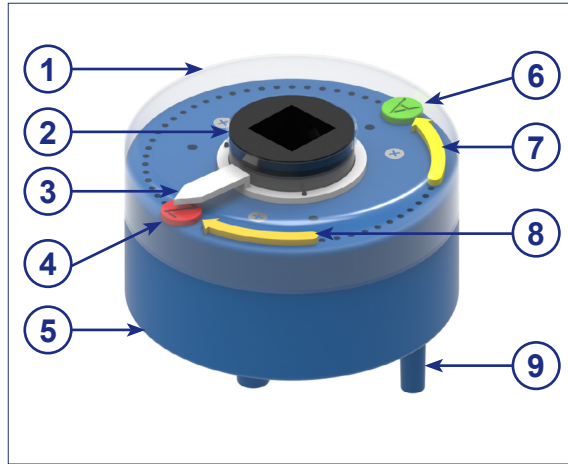
ION INDICATORS R SPINDLE EXTENSIONS

TABLE OF CONTENTS

Mechanical position indicator, plastic	6 - 7
Mechanical position indicator, aluminium	8 - 9
Mechanical position indicator, stainless steel	10 - 11
Electrical position indicator, stainless steel	12 - 13
Electrical data:	
Electrical position indicator, stainless steel	14
Installation example:	
Electrical position indicator, stainless steel	15
DALMINEX installation system	16 - 17
Operating manual:	
Electrical position indicator, stainless steel	18 - 19

POSITION INDICATOR

Mechanical position indicator, plastic



①



Protective cover,
transparent
Material: PE
Replaceable spare part

②



Adapter with Centring-
hole for square
spindle extensions
Material: PE

③



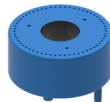
White pointer
Material: PE

④



Red marking pin (C)
Material: PA
Replaceable spare part

⑤



Body, lid with circle of
holes for marking-pins
Material: PE

⑥



Green marking pin (O)
Material: PA
Replaceable spare part

⑦



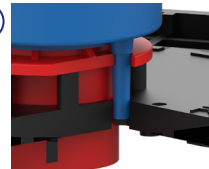
Yellow direction arrow
(anti-clockwise)
Material: PE
Replaceable spare part

⑧



Yellow direction arrow
(clockwise)
Material: PE
Replaceable spare part

⑨



Anchoring-pin for
protective-tube cap or
DALMINEX
supporting-plate
Material: PE

scan me!



Mechanical position indicator, plastic

max. turns/ stroke	Inner-Square	Spindle extension	Article No.	Weight
81	□ 15 mm	DN40/50	13930	0.2 kg
81	□ 19 mm	DN65-150	13931	0.2 kg
81	□ 26 mm	DN175-300	13932	0.2 kg



DALMINEX installation system

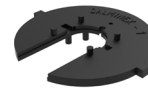
DALMINEX support plate (suitable for position indicators)

Material	Article No.	Weight
Plastic	12601.01	14.0 kg



DALMINEX fixing disc suitable for DALMINEX support plate

Material	Article No.	Weight
Plastic	12602.01	1.16 kg



Surface box acc. to DIN 4056 Type 2

Material	Article No.	Weight
Plastic	4056-2.WK	12.1 kg



Full function and warranty through professional installation of the DALMINEX installation system.



Surface box DIN 4056 Type 2

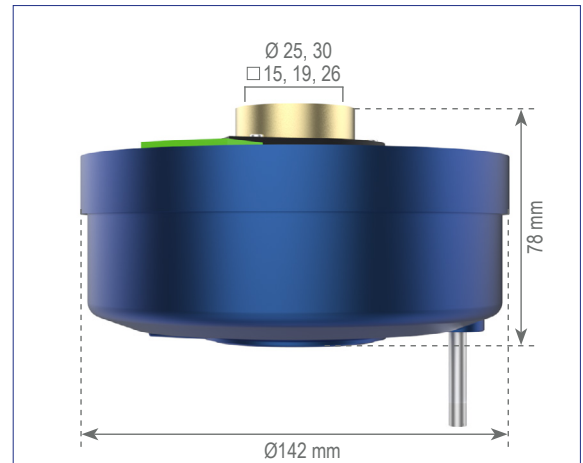
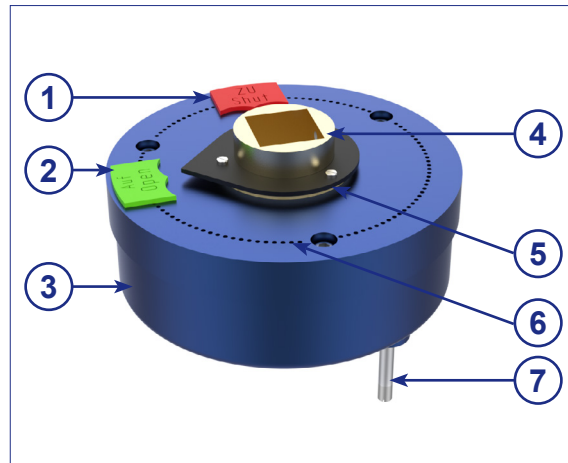
Replaceable spare parts

Description	Article No.	Weight
Protective cover	13913.19	0.52 kg
Open/Close marking-pins, green/red	13933.01	0.01 kg
Direction arrow, yellow (anti-clockwise)	13933.02-L	0.01 kg
Direction arrow, yellow (clockwise)	13933.02-R	0.01 kg

Attention! DALMINEX position indicators cannot subsequently be installed on unprepared spindle extensions!

Subject to technical modifications!

Mechanical position indicator, aluminium



①



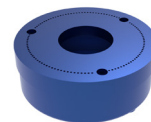
Marking-pin red (close)
Material: PA
Replaceable spare part

②



Marking-pin green (open)
Material: PA
Replaceable spare part

③



Body
(Powder coating)
Material: Cast aluminium

④



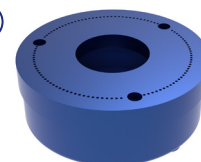
Adapter with Centring-hole for square / keyway spindle extensions
Material: Cast zinc

⑤



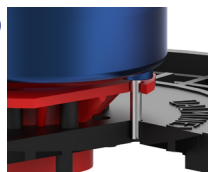
Pointer, black
Material: S235JR epoxy

⑥



Lid with circle of holes for marking-pins
(Powder coating)
Material: Cast aluminium

⑦



Anchoring-pin for protective-tube cap or DALMINEX supporting-plate
Material: 1.4301

scan me!



Mechanical position indicator, aluminium

max. turns/stroke	Round insert diameter		Square insert			Weight
	Ø25 mm	Ø30 mm	□ 15 mm	□ 19 mm	□ 26 mm	
13	13910.25	13910	13910.15	13910.19	13910.26	1.7 kg
47	13909.25	13909	13909.15	13909.19	13909.26	1.7 kg
140	13907.25	13907	13907.15	13907.19	13907.26	1.7 kg
470	13908.25	13908	13908.15	13908.19	13908.26	1.7 kg
1390	13918.25	13918	13918.15	13918.19	13918.26	1.7 kg

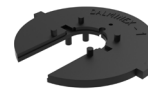


DALMINEX installation system

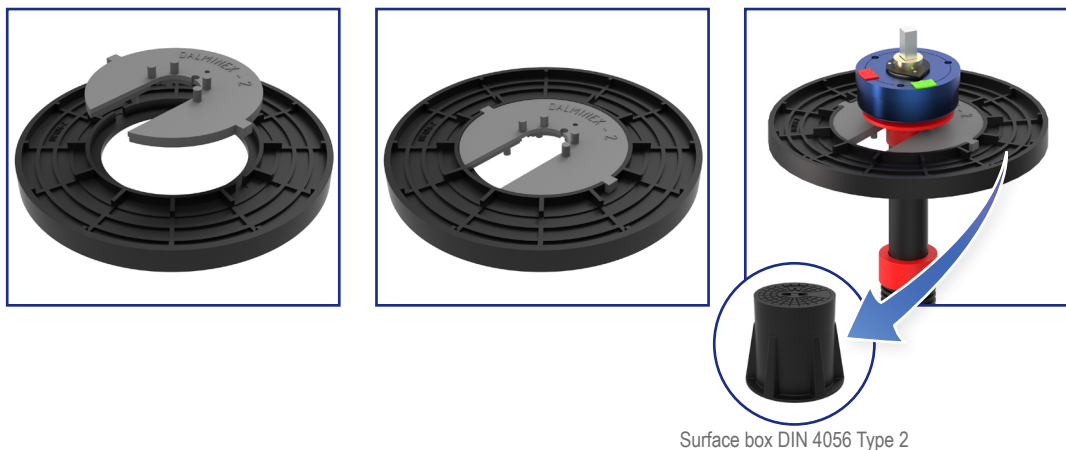
DALMINEX support plate (suitable for position indicators)		
Material	Article No.	Weight
Plastic	12601.01	14.0 kg

DALMINEX fixing disc suitable for DALMINEX support plate		
Material	Article No.	Weight
Plastic	12602.01	1.16 kg

Surface box acc. to DIN 4056 Type 2		
Material	Article No.	Weight
Plastic	4056-2.WK	12.1 kg



Full function and warranty through professional installation of the DALMINEX installation system.



Surface box DIN 4056 Type 2

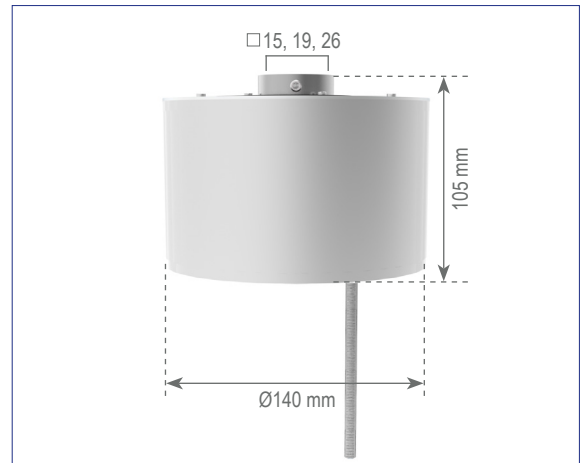
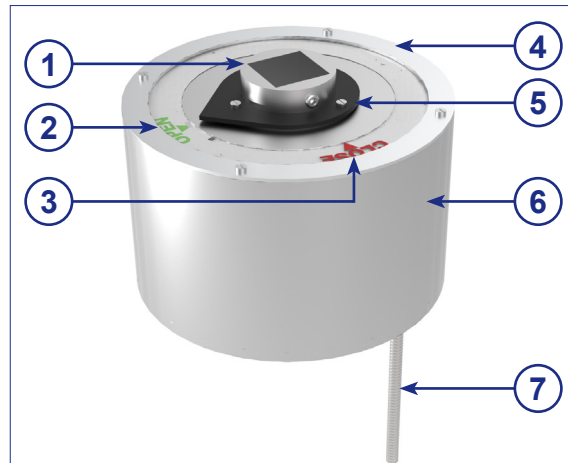
Replaceable spare part

Description	Article No.	Weight
Marking-pin-set, open/shut, green/red	13904	0.01 kg

Attention! DALMINEX position indicators cannot subsequently be installed on unprepared spindle extensions!

Subject to technical modifications!

Mechanical position indicator, stainless steel



①



Adapter with
centring-hole
Material: Cast zinc

②



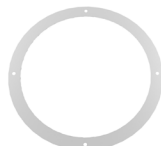
Marking disc
(OPEN)
Material: PMMA
Replaceable spare part

③



Marking disc
(CLOSE), transparent
Material: PMMA
Replaceable spare part

④



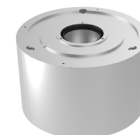
Holding disc
Material: 1.4301
Replaceable spare part

⑤



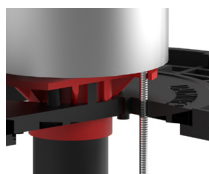
Pointer, black
Material: S235JR epoxy

⑥



Body
Material: 1.4301

⑦



Anchoring-pin for
protective-tube cap or
DALMINEX supporting-
plate
Material: 1.4301

scan me!



Mechanical position indicator, stainless steel



max. turns/stroke	Square insert		Weight
	□ 19 mm	□ 26 mm	
14	13019.14RZW	13026.14RZW	5.0 kg
47	13019.47RZW	13026.47RZW	5.0 kg
140	13019.140RZW	13026.140RZW	5.0 kg
470	13019.470RZW	13026.470RZW	5.0 kg

DALMINEX installation system

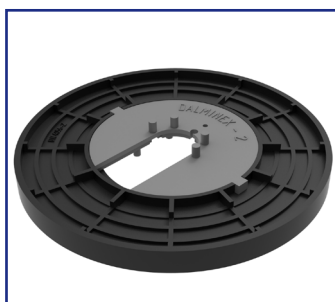
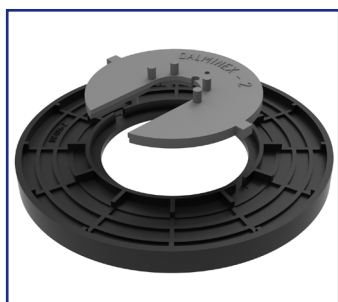
DALMINEX support plate (suitable for position indicators)		
Material	Article No.	Weight
Plastic	12601.01	14.0 kg

DALMINEX fixing disc suitable for DALMINEX support plate		
Material	Article No.	Weight
Plastic	12602.01	1.16 kg

Surface box acc. to DIN 4056 Type 2		
Material	Article No.	Weight
Plastic	4056-2.WK	12.1 kg



Full function and warranty through professional installation of the DALMINEX installation system.



Surface box DIN 4056 Type 2

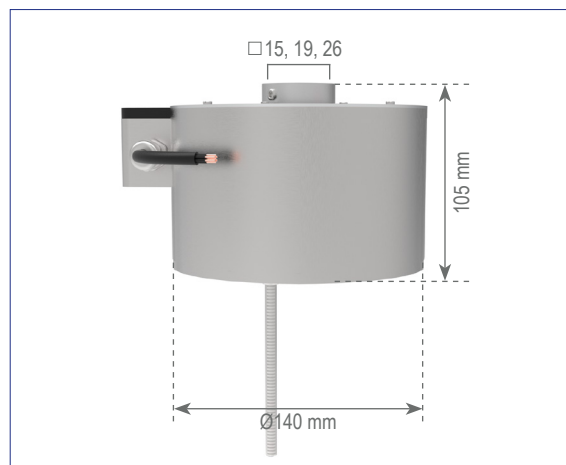
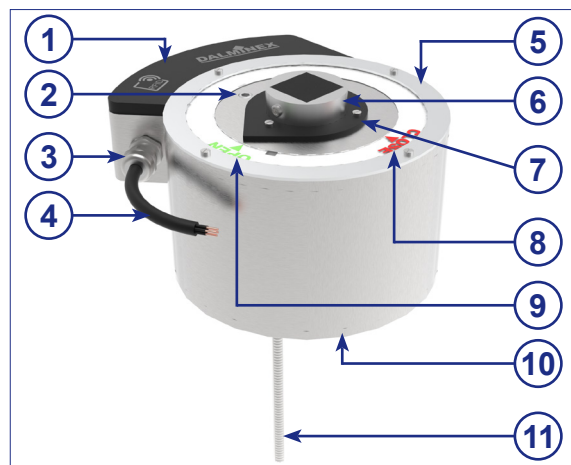
Replaceable spare parts

Description	Article No.	Weight
Marking disc (OPEN)	O-22794	0.004 kg
Marking disc (CLOSE)	C-22794	0.004 kg
Holding disc	22794	0.01 kg

Attention! DALMINEX position indicators cannot subsequently be installed on unprepared spindle extensions!

Subject to technical modifications!

Electrical position indicator, stainless steel



RFID disc
Material: ASA



Set screw M8x10 mm
Material: 1.4301



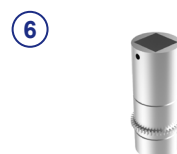
Strain relief
Material: Nickel-plated
brass



Control cable
(waterproof)



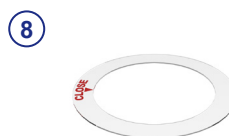
Holding disc
Material: 1.4301
Replaceable spare part



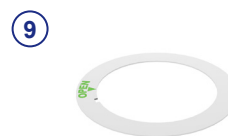
Adapter with
centring-hole
Material: Cast zinc



Pointer, black
Material: S235JR epoxy



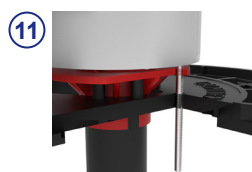
Marking disc
(CLOSE), transparent
Material: PMMA
Replaceable spare part



Marking disc
(OPEN)
Material: PMMA
Replaceable spare part



Body
Material: 1.4301



Anchoring-pin for
protective-tube cap or
DALMINEX supporting-
plate
Material: 1.4301



Electrical position indicator, stainless steel



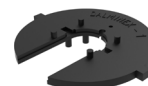
max. turns/stroke	Square insert		Weight
	□ 19 mm	□ 26 mm	
14	13019.14EZW	13026.14EZW	5.9 kg
47	13019.47EZW	13026.47EZW	5.9 kg
140	13019.140EZW	13026.140EZW	5.9 kg
470	13019.470EZW	13026.470EZW	5.9 kg

DALMINEX installation system

DALMINEX support plate (suitable for position indicators)		
Material	Article No.	Weight
Plastic	12601.01	14.0 kg

DALMINEX fixing disc suitable for DALMINEX support plate		
Material	Article No.	Weight
Plastic	12602.01	1.16 kg

Surface box acc. to DIN 4056 Type 2		
Material	Article No.	Weight
Plastic	4056-2.WK	12.1 kg



Full function and warranty through professional installation of the DALMINEX installation system.



Surface box DIN 4056 Type 2

Replaceable spare parts

Description	Article No.	Weight
Marking disc (OPEN)	O-22794	0.004 kg
Marking disc (CLOSE)	C-22794	0.004 kg
Holding disc	22794	0.01 kg

Attention! DALMINEX position indicators cannot subsequently be installed on unprepared spindle extensions!

Subject to technical modifications!



Electrical position indicator, stainless steel

With reed contact switch for line monitoring open and close.

Stainless steel body for installation on a spindle extension buried or in a chamber

- ◆ Capsuled and waterproof in accordance with IP68 DIN 40050
- ◆ Screws and connecting parts are in stainless steel
- ◆ Inner area is grease-proofed
- ◆ Electrical parts are sealed with epoxy resin
- ◆ Maintenance-free
- ◆ Working temperature between -40 bis +105 °C
- ◆ Suitable for use with surface box type DIN 4056 size 2

360° Installation intervals:

- ◆ 0 – 14 turns/stroke
- ◆ 0 – 47 turns/stroke
- ◆ 0 – 140 turns/stroke
- ◆ 0 – 470 turns/stroke

Available for use with following square rod dimensions*:

- ◆ 18x18 mm
- ◆ 25x25 mm

**other options available upon request.*

Available for use with following keyway dimensions:

- ◆ Upon request



Electrical data

Magnetic switch, one changeover contact each for opening and closing

Switch voltage: ≥ 1 V bis 20 V

Switch capacity: 100 VA at a max. 500 mA

Protection class: min. IP68, DIN 40050

Connection:

Control cable (7x0,5mm²)

Length 1,5m (other lengths available upon request)

Please take note of the following:

- ◆ The connection and installation of the position indicator must always be carried out by trained personnel.
- ◆ The switch connection cable must hang freely down and shouldn't look up or be bent.
- ◆ The cable-ends have to be water-tight against moisture through cast-resin joints etc.
- ◆ The surface box must be installed such that the water entry can freely flow away.
- ◆ The cable-ends should not lie in water as this would get into the switch housing.
- ◆ The switch should not be used in an aggressive environment as this could affect the seal of the switch housing.
- ◆ The switch housing is protected by up to class IP68.

In cases where the points above have not been followed, the warranty will be void.

Installation example



The innovative solution for spindle extensions and posit

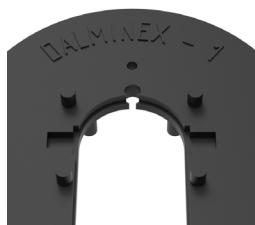
With the DALMINEX installation system the DALMINEX position indicators as well as spindle extensions, also spindle extensions from other manufacturers, can be fixed easily, either vertically or horizontally. After installing the surface box DIN 4056-2, the top part of the spindle extension as well as the position indicator remain centred and cannot sink down any further.

The DALMINEX installation system consists of the following components:

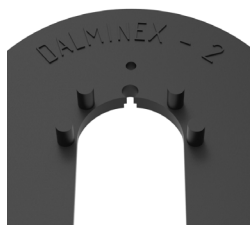
- DALMINEX fixing disc
- DALMINEX support plate
- Surface box DIN 4056-2



DALMINEX fixing disc, can be used on both sides

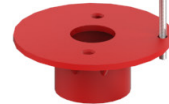
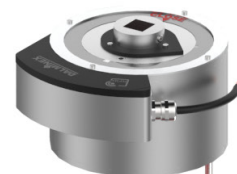


Side 1



Side 2

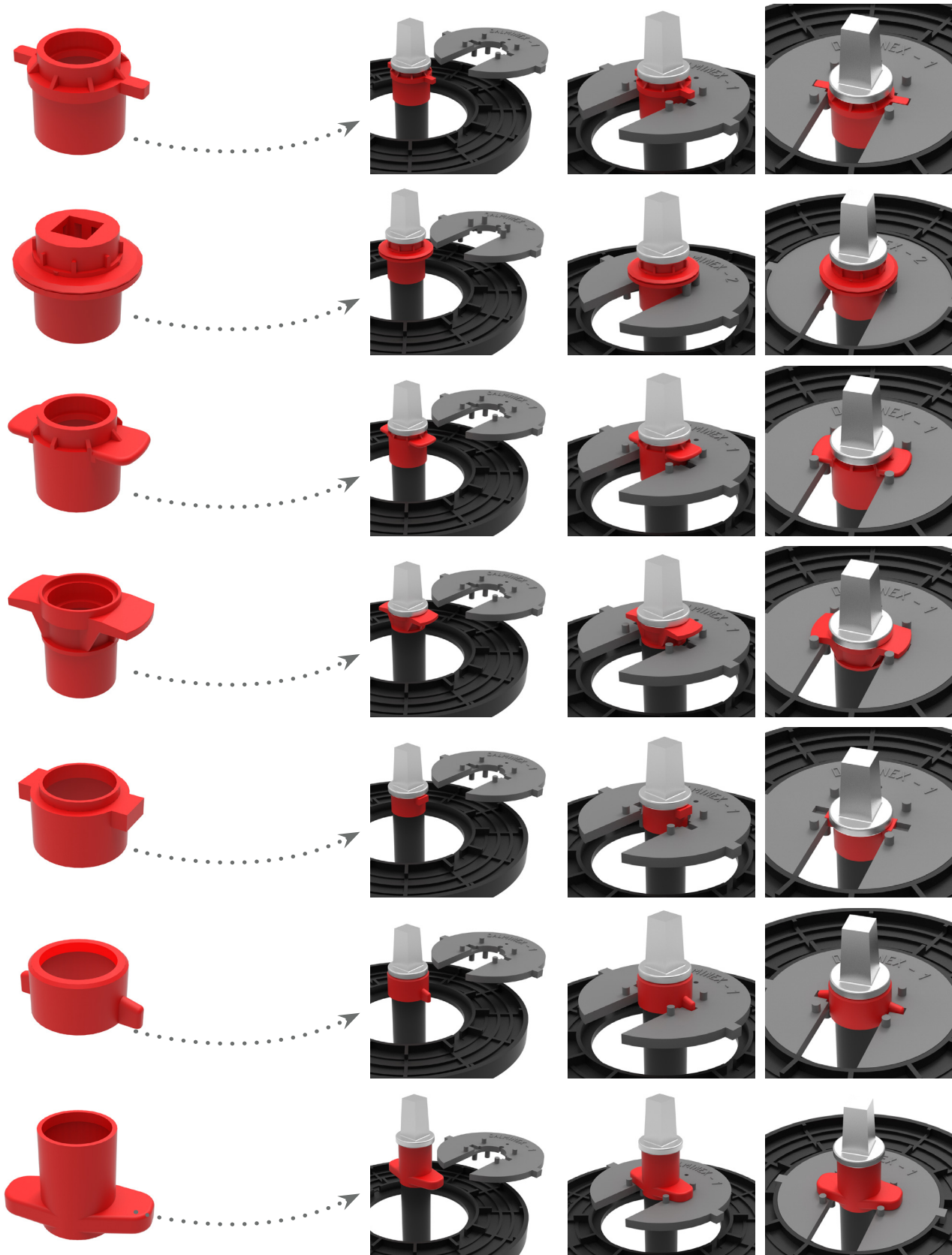
DALMINEX support plate suitable for DALMINEX fixing disc and surface box acc. to DIN 4056 Type 2



scan me!



ion indicators in pipeline construction



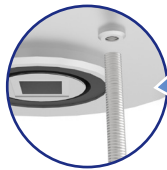
Electrical position indicator, stainless steel



1

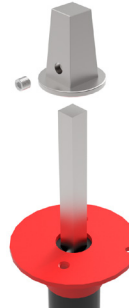


- As delivered
(Pointer on OPEN)



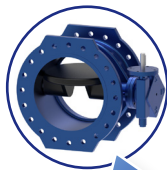
Screw in the anchoring-pin

2

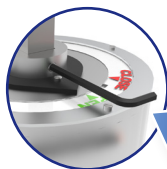


- Remove the square cap from
the extension

3



- Put the position indicator
on the opened valve, fix the
anchoring-pin on the centring cap
- Tighten the set screw



4



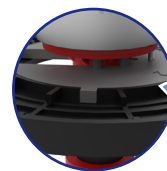
- Put the square cap back on and
tighten the set screw

5



- Put on the
DALMINEX support plate

6

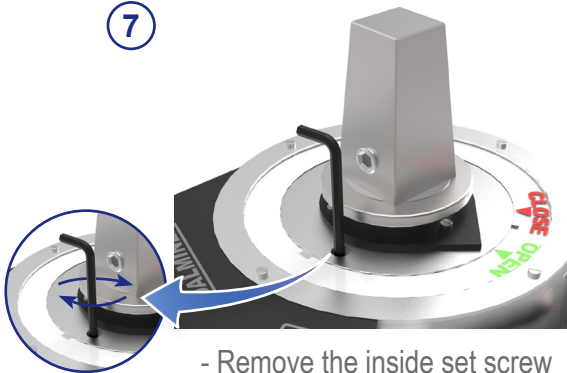


- Extend the spindle extension,
insert the DALMINEX fixing disc
and make sure that the
centring cap and the position
indicator is centered



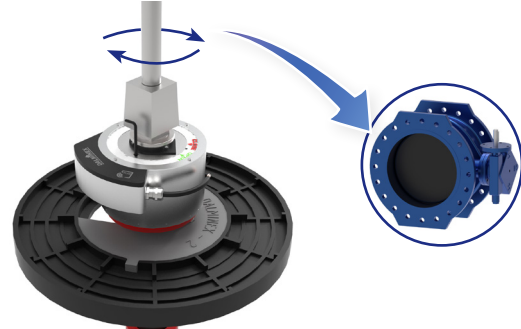
Electrical position indicator, stainless steel

7



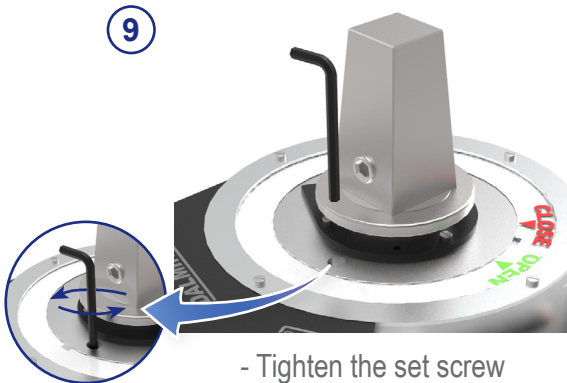
- Remove the inside set screw
with an allen key

8



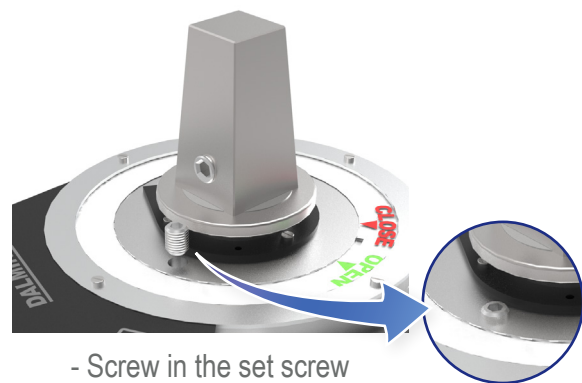
- Close the valve completely
(Don't remove the allen key!)

9



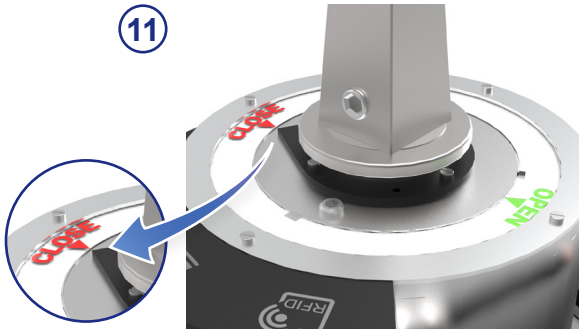
- Tighten the set screw
(Remove the allen key)

10



- Screw in the set screw

11

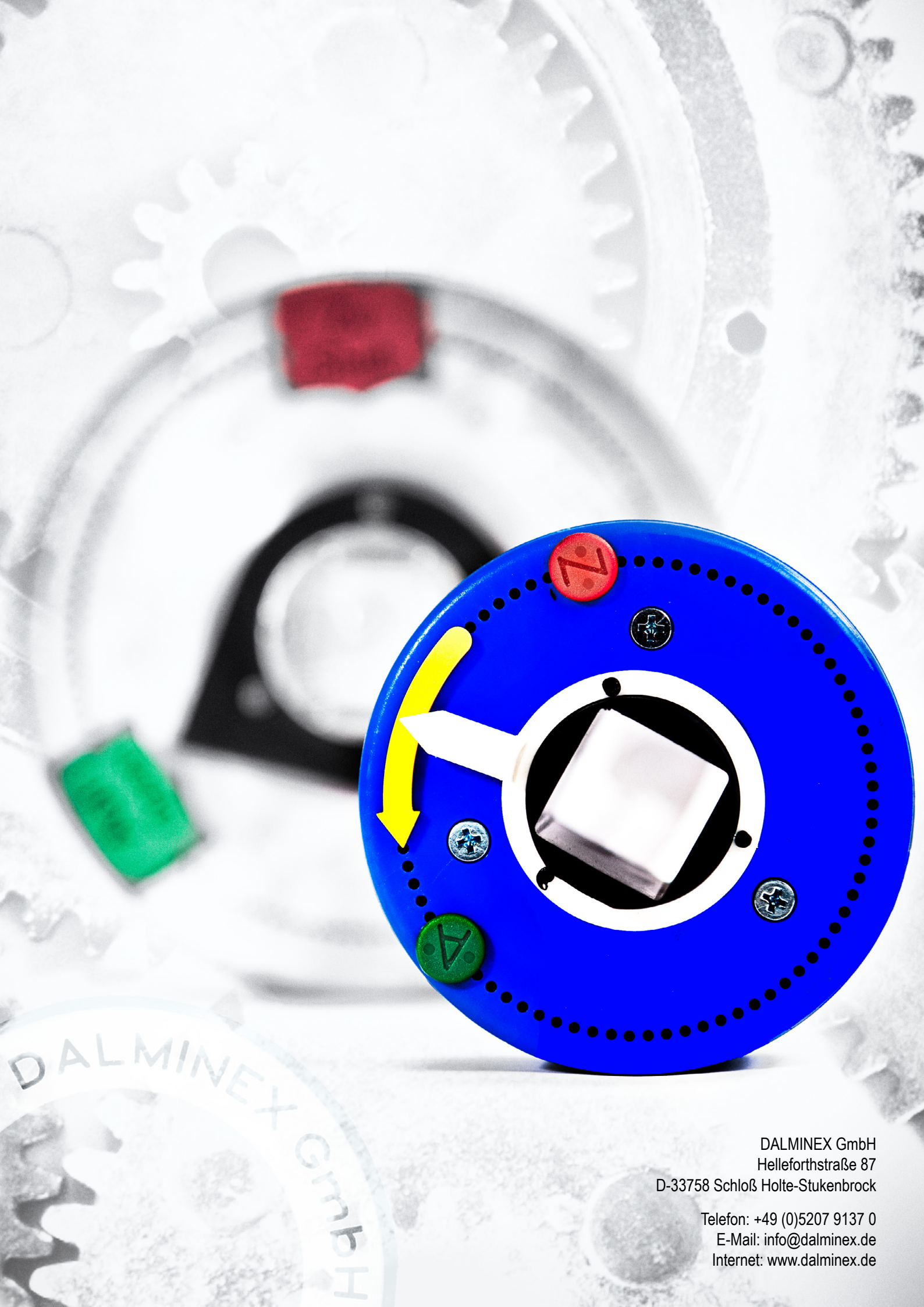


- Align the marking disc
(CLOSE) according to the arrow

12



- Tighten the marking disc with
the holding disc
(4 screws)



DALMINEX GmbH

DALMINEX GmbH
Helleforthstraße 87
D-33758 Schloß Holte-Stukenbrock

Telefon: +49 (0)5207 9137 0
E-Mail: info@dalminex.de
Internet: www.dalminex.de